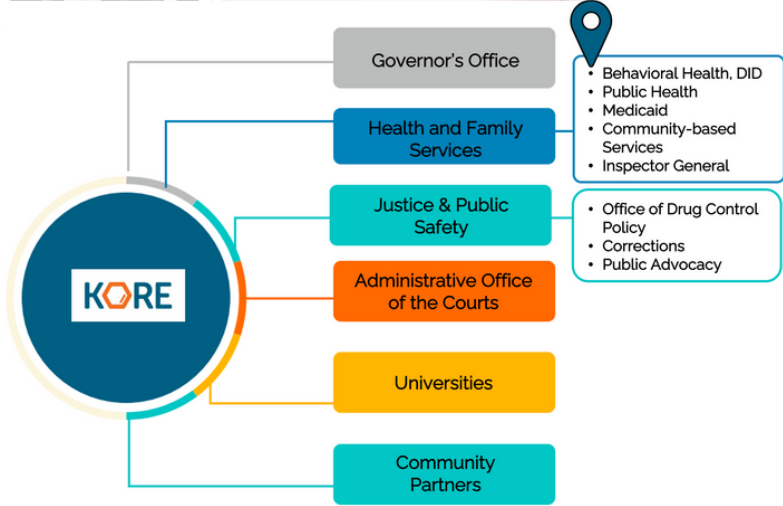


# KORE

## KENTUCKY OPIOID RESPONSE EFFORT

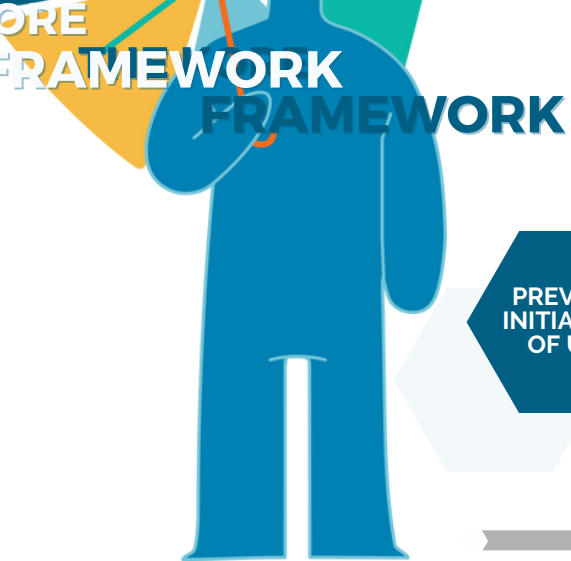
**KORE's** mission is to expand and sustain an equitable recovery-oriented system of care and reduce opioid-related overdose deaths in the Commonwealth of Kentucky by increasing access to evidence-based prevention, harm reduction, treatment, and recovery support services.

Led by the Department for Behavioral Health, Developmental, and Intellectual Disabilities (**DBHDID**) within the Cabinet for Health and Family Services, KORE is federally-funded through formula grants distributed by the Substance Abuse and Mental Health Services Administration (SAMHSA).



STATE TARGETED RESPONSE (2017 - 2020)	\$21.1 Million
STATE OPIOID RESPONSE I (2018 - 2021)	\$78.8 Million
STATE OPIOID RESPONSE II (2020 - 2023)	\$70.9 Million
STATE OPIOID RESPONSE III (2022 - 2024)	\$71.8 Million

## GUIDING PRINCIPLES OF SERVICE EXPANSION



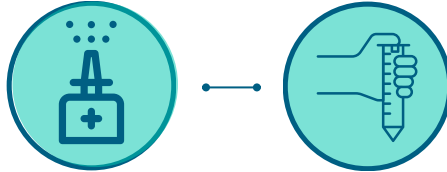
# HARM REDUCTION + PREVENTION

## NALOXONE SAVES LIVES

Naloxone (Narcan) is a safe medication that reverses opioid overdose by attaching to opioid receptors in the brain and blocking the effects of opioids. This allows an individual to resume breathing.



## OVERDOSE PREVENTION



In partnership with the **Department for Public Health** and the **KY Pharmacists Association**, a statewide naloxone program distributes free naloxone to Kentuckians.

## SYRINGE SERVICE PROGRAMS

Comprehensive SSPs are safe, effective, cost-saving. SSPs do not increase illegal drug use or crime, and play an important role in reducing the transmission of viral hepatitis, HIV and other infections. SSP participants are 5x more likely to enter drug treatment



## HARM REDUCTION

Harm reduction is a set of practical strategies and ideas aimed at reducing negative consequences associated with substance use.



## FENTANYL TEST STRIPS



Detecting fentanyl allows people to reduce the risk of an overdose by employing harm reduction strategies

## OPIOID STEWARDSHIP



The KY Hospital Association Program + 112 hospitals

GOAL

Improve Rx practices and reduce opioid prescriptions by 1/3



Enhancements to the **Kentucky All Schedule Prescription Electronic Reporting (KASPER)** system increased prescriber and pharmacist access to life-saving information



## MATCHING PREVENTION TO RISK LEVEL

**Universal programs and practices** take the broadest approach and are designed to reach entire groups or populations.

**Selective programs and practices** target individuals or groups who experience greater risk factors (and perhaps fewer protective factors) that put them at higher levels of risk for substance misuse than the broader population.

**Indicated programs and practices** target individuals who show early signs of substance misuse but have not yet been diagnosed with a substance use disorder

## K-12 & AFTER-SCHOOL PRIMARY PREVENTION PROGRAMS

TOO GOOD FOR DRUGS

SOURCES OF STRENGTH

POSITIVE ACTION



REGIONAL COLLABORATION SPECIALISTS



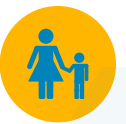
YOUTH EMPOWERMENT SPECIALISTS



YOUTH MENTAL HEALTH FIRST AID



PREVENTION INTERNSHIPS



EARLY CHILDHOOD CONSULTANTS

## SAFETY AT HOME

Regional Prevention Centers (RPCs) champion the 'Remove the Risk' media campaign to promote prescription safety in the home



# TREATMENT

## MEDICATIONS FOR OPIOID USE DISORDER (MOUD)

MOUD saves lives. Methadone and buprenorphine reduce illicit drug use and fatal overdose by over 50%, as well as improve quality of life.



Licensed Residential



Methadone Treatment

## TREATMENT ACCESS PROGRAMS

KORE serves as a **payor of last resort for uninsured individuals** needing licensed and American Society of Addiction Medicine accredited residential levels of care, intensive outpatient treatment, or methadone.

## TREATMENT LINKAGE & RETENTION VIA RECOVERY COACHES

## INTEGRATED PRIMARY CARE + OUD TREATMENT

KORE-funded programs **integrate** OUD services into health care settings including **Federally Qualified Health Centers, Primary Care Clinics, and Rural Health Clinics.**



## CONTINGENCY MANAGEMENT

is an evidence-based, behavioral treatment that involves giving patients tangible rewards to reinforce selected behaviors.



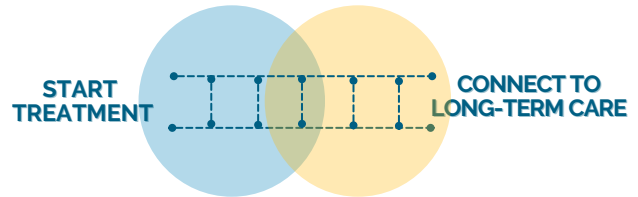
## FAMILY SERVICES

KORE funds **START, TAP** and **KSTEP** program expansion to integrate **OUD** treatment for families involved with child welfare.



## BRIDGE TO TREATMENT

**Hospital Bridge Clinics** and **inpatient consultation services** provide harm reduction and treatment services, including MOUD, in the hospital.



## MOBILE TREATMENT

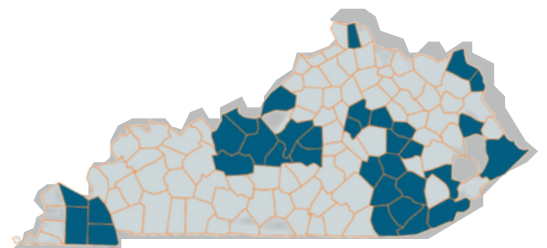


**Mobile** treatment reduces barriers to treatment access that disproportionately affect people and communities.

## QUICK RESPONSE TEAMS



**QRTs** provide **overdose** follow-up and engagement with survivors and their family.





# RECOVERY

## RECOVERY COMMUNITY CENTERS

RCCs provide centralized resources for community-based recovery supports.

RCCs provide peer support, mutual aid, advocacy, and linkage to housing, education, employment, and transportation.



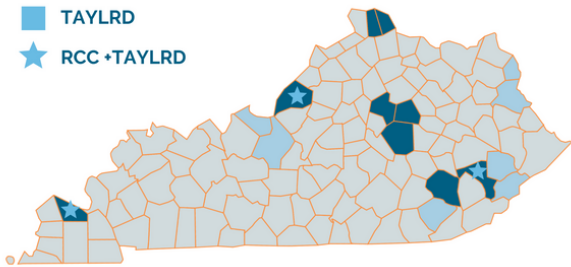
RCCs are not residences or treatment centers. RCCs serve as local hubs of community-based support.



RCCs are led by people with lived experience.

Statewide, Kentucky has 11 RCCs

- RCC
- TAYLRD
- ★ RCC + TAYLRD



## BUILDING RECOVERY CAPITAL

Recovery is a process of change through which people improve their health and wellness, live self-directed lives, and strive to reach their potential. Recovery capital is the total resources that a person has to move toward wellness. Programs can help build recovery capital, including:

### PERSONAL

Health, Employment, Housing, Education, Financial, Clothing, Transportation, Food

### SOCIAL

Family, Supportive Partners, Friends, Recovery-related Social Events

### COMMUNITY

Community attitudes, policies, and resources

## REENTRY SUPPORT

The Department of Corrections' Reentry Employment Program Administrators and Re-entry Coordinators provided re-entry and employment supports to corrections-involved individuals.

## EMPLOYMENT SERVICES

The Strategic Initiative for Transformational Employment (SITE) links individuals to job training, recovery-friendly employment, and/or recovery supports.

### RECOVERY HOUSING

The Kentucky Recovery Housing Network was established to certify quality housing using the National Alliance of Recovery Residence standards.

105 Oxford Houses are currently operating.

### MUTUAL AID + YOUNG PEOPLE IN RECOVERY (YPR)

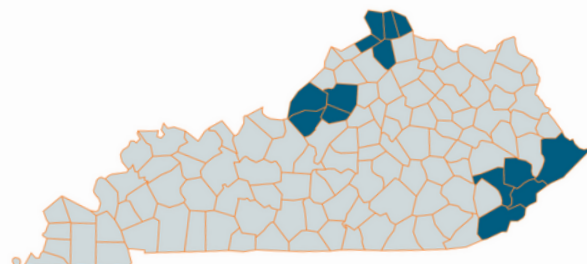


SMART Recovery and Double Trouble in Recovery are evidence-based mutual aid groups where people help one another resolve and manage problems with addiction.

YPR's mission is to provide life skills and peer support to help people recover and reach their full potential.

## ACCESS TO RECOVERY

Access To Recovery (ATR) supported individuals in building recovery capital by assisting with supports such as transportation and housing.



# INFRASTRUCTURE

## INFRASTRUCTURE

Infrastructure builds and equips communities' opioid response capacity by decreasing stigma, using data to drive decision making, fostering quality services, and expanding the provider network.



## JUDICIAL

The Administrative Office of the Courts' RESTORE program educates and trains court personnel.

## EMPLOYERS

The Opioids and the Workplace Toolkit developed by The Kentuckiana Health Collaborative and Transformational Employment Program developed by the Kentucky Chamber of Commerce provides recommendations and tools for employers.



## STUDENTS

Kentucky colleges and universities are providing a range of training to medical, pharmacy, prevention, and behavioral health students.

## PROVIDER TRAINING

- Mental Health First Aid
- Tobacco Cessation for pregnant persons
- DATA Waiver training for buprenorphine prescribing
- Assessing and Managing Suicide Risk Training for Substance Use Providers



## PEERS

**Peer Support Specialists** and **supervisors** receive training in **person-centered recovery planning**. Peers are located in **hospitals & primary care; domestic violence shelters; mobile & crisis treatment; RCCs; & SSPs**.

## ACCOMODATIONS

**Deaf & Hard of Hearing** reimbursement services are available for providers.



## UNSHAME

A statewide anti-stigma campaign, Unshame KY is helping to reduce stigma that people experience, stigma that people and systems reinforce, and stigma against medications for OUD

[unshameky.org](http://unshameky.org)



## EQUITY

**KORE** partners with the **Opioid Response Network** to provide training and technical assistance **to improve equitable access** to services.



## COMMUNICATIONS

Communications initiatives focus on education to the general public, overdose prevention, and awareness of resources through targeted media outreach.

