

The Road to ABI Waiver Services

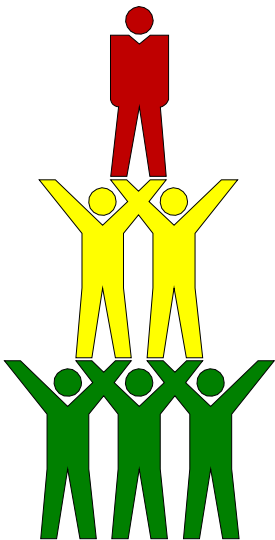
Provided by:

Kentucky Department for Medicaid Services

Acquired Brain Injury Branch



Services and supports available to help people with brain injuries:

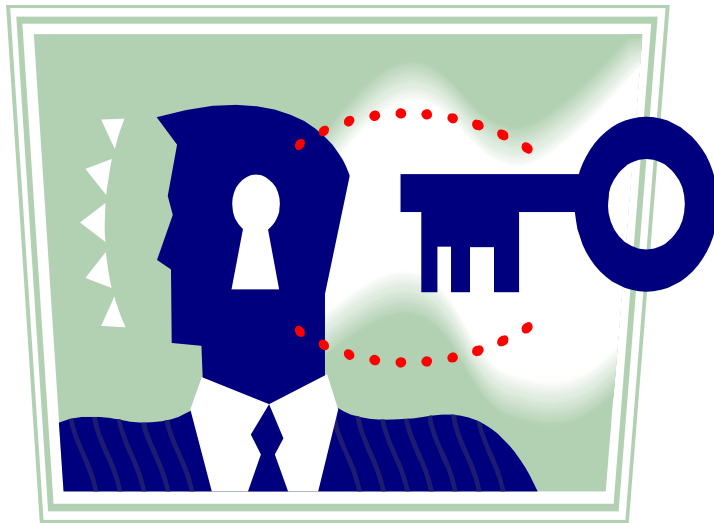


- Acquired Brain Injury Medicaid Waiver Program
- Acquired Brain Injury Long Term Care Waiver Program
- Traumatic Brain Injury Trust Fund
- Kentucky Transitions (Money Follows the Person)

Acquired Brain Injury Waiver Program

- A rehabilitation, community re-entry program
- Not a lifelong, maintenance program
- 200 unduplicated slots per year
- Administered by the Acquired Brain Injury Branch

People are eligible who:



- Are eighteen years of age and older
- are at Rancho Level IV or above
- meet nursing facility level of care 907 KAR 1:022
- show the potential to maintain or progress
- are financially eligible for Medicaid by the Dept. of Community Based Services

ABI Waiver Services Include:

- case management
- respite
- adult day training
- behavioral intervention
- occupational therapy
- Supervised residential care
- specialized medical equipment and supplies
- personal care
- companion services
- supported employment
- counseling
- group counseling
- speech therapy
- environmental modifications
- Consumer directed option
- Assessment & Reassessment

Acquired Brain Injury Long Term Care Waiver Program

- A total of 200 unduplicated slots
- Serve individuals who have met maximum rehab potential
- Serve individuals whose needs are not met by the Acquired Brain Injury Waiver
- Serving individuals who need long term maintenance and support

People are eligible who:

- Are 18 years and older
- are at Rancho Level IV or above
- meet nursing facility level of care 907 KAR 1:022
- Have an ABI which necessitates; supervision, rehabilitation services, and long term supports
- Have an ABI that involves; cognition, behavior, or physical function
- are financially eligible for Medicaid by the Dept. of Community Based Services

ABI Long Term Care Waiver Services

Include:

- case management
- respite
- adult day training
- behavioral programming
- occupational therapy
- supervised residential care
- specialized medical equipment and supplies
- family training
- adult day health care
- assessment & reassessment
- community living supports
- supported employment
- counseling
- group counseling
- speech therapy
- environmental modifications
- nursing supports
- physical therapy
- Consumer Directed Option

Traumatic Brain Injury Trust Fund

- A program for children and adults who have a medically documented brain injury
- The trust fund is funded through fines collected from DUI fines and court costs
- Governed by a 9 member Board of Directors
- Mandated to maintain a registry of brain and spinal cord injuries

TBI Trust Fund Benefits

- case management
- companion services
- prevocational services
- respite care
- structured day program
- wrap around services
- occupational therapy
- psychological services
- speech therapy
- supported employment

TBI Trust Fund does not pay for:

- Medication
- Institutionalization
- Hospitalization
- Legal/attorney fees

TBI Trust Fund Contact Information

Department for Aging and
Independent Living (DAIL)

502-564-6930 Ext.3498

Tonia Wells - ToniaA.Wells@ky.gov



Other potential sources of services and supports include:

- Department for Vocational Rehabilitation
- Community Mental Health Centers/ Crisis Stab Units
- Substance Abuse programs
- Low income housing programs
- Inpatient neurobehavioral services for adults
- Medicaid Waiver programs i.e. Home & Community Based Waiver, Michelle P. Waiver, Supports for Community Living

The On-going Development of Services:

- The Department for Medicaid Services and the Acquired Brain Injury Branch continue to work with providers of community services, other governmental agencies, individuals with brain injury, families and advocacy groups to identify and develop services and supports for individuals with brain injury and their families.

Contact Information:

The Acquired Brain Injury Branch

502-564-5198

