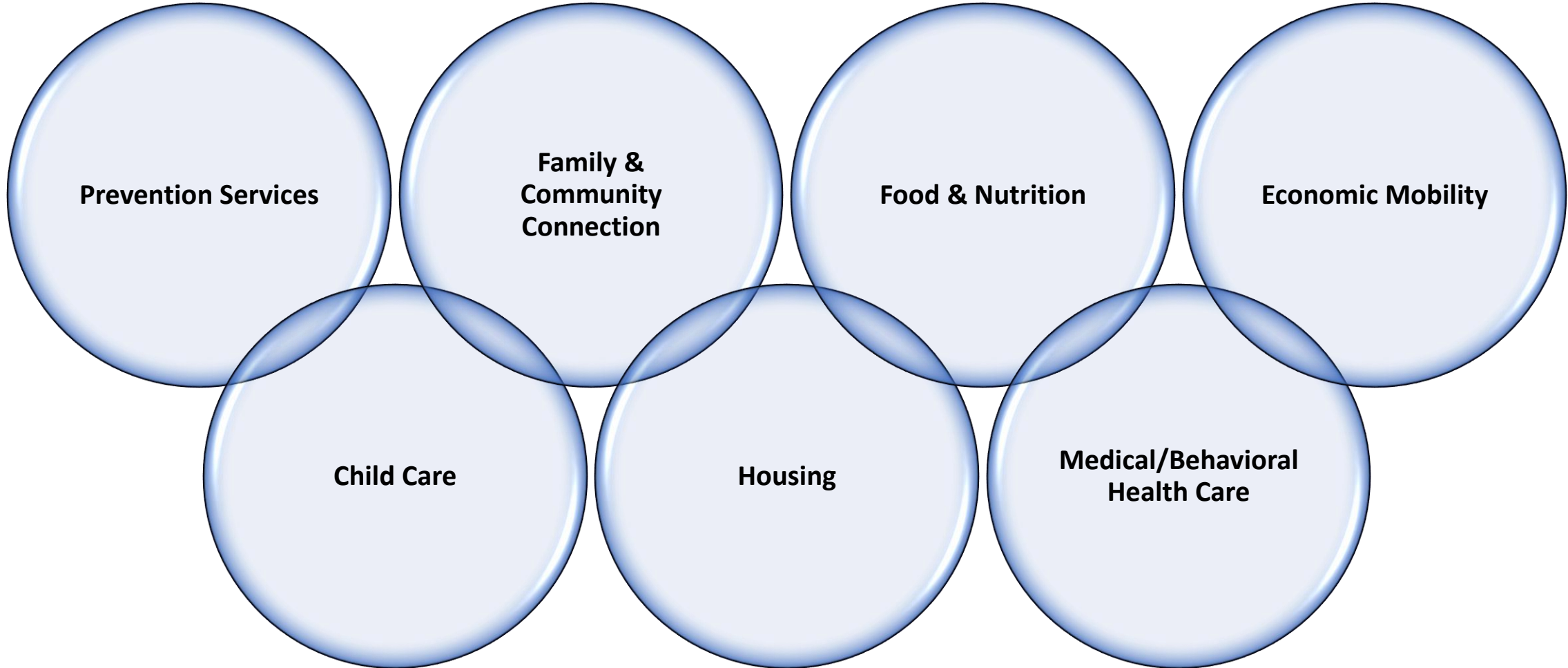


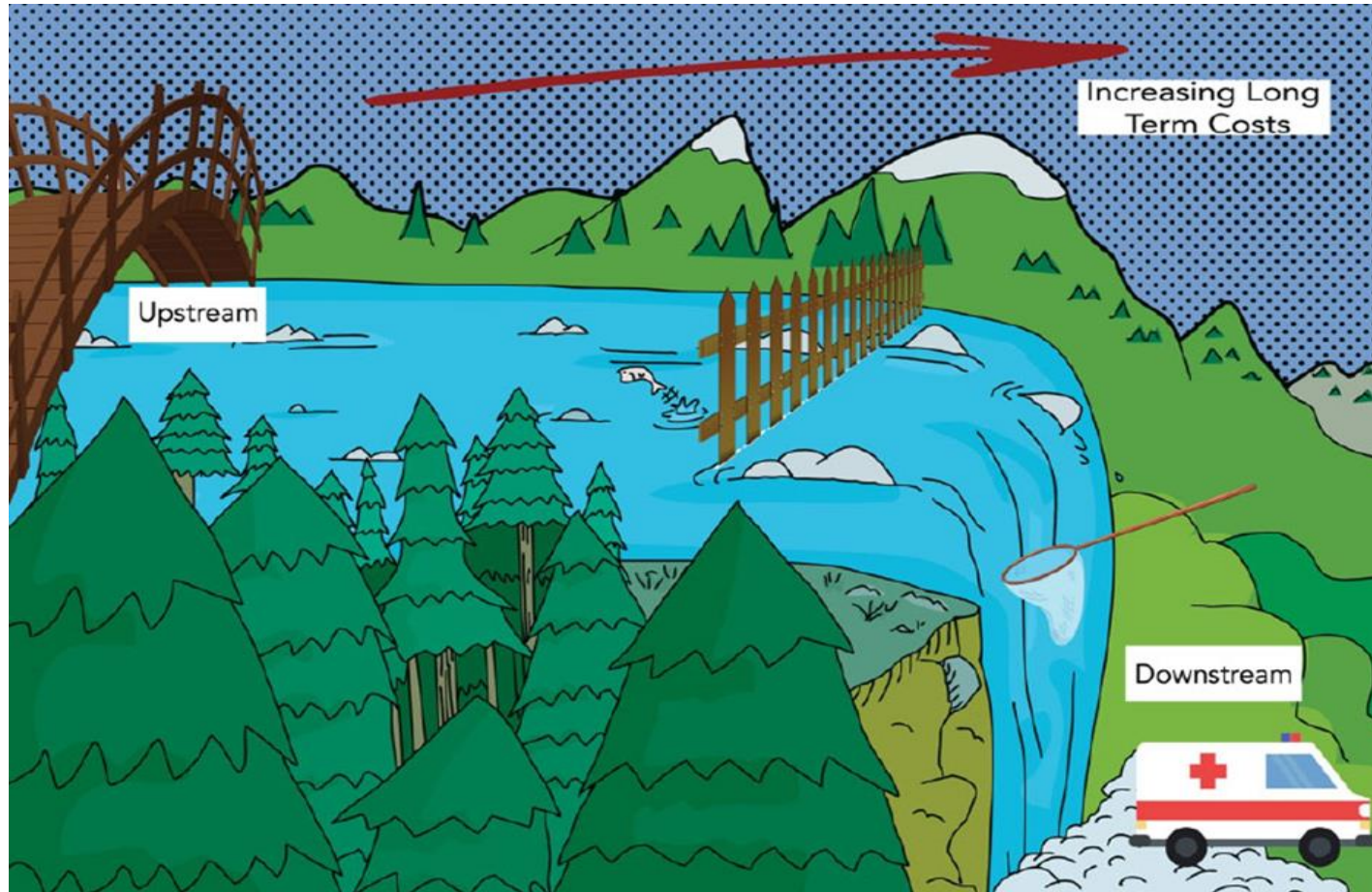


CABINET FOR HEALTH
AND FAMILY SERVICES

Department for Community Based Services
*Promoting Health and Well-Being Across
Kentucky*



Moving Upstream



Credit: Tribal Epidemiology Centers

Meeting Family Needs: A Multi-System Policy Framework for Child and Family Wellbeing



Types of Prevention Efforts

Primary prevention activities are directed at the general population and attempt to stop maltreatment before it occurs. All members of the community have access to and may benefit from these services.

Secondary prevention activities with a high-risk focus are offered to populations that have one or more risk factors associated with child maltreatment.

Tertiary prevention activities focus on families where maltreatment has already occurred and seek to reduce the negative consequences of the maltreatment and to prevent its recurrence.

Family & Youth
Driven

Community
Collaboration

Connecting Families to Support

Leverage &
Communicate Data

Policy & System
Changes



Addressing equity & inclusion

Changing paradigm for how families are served

Honoring family voice and choice



Primary Prevention

Ensuring families have access to information and support necessary for family well-being.



Prevention Evidence-Based Practices

Providing a robust prevention service array to prevent future maltreatment and entry into care



Community Response and Well-Being

Collaborating and enhancing community-based partnerships to support families who may have risk factors for child maltreatment



Equity

Inclusion

Roadmap to a Child & Family Well-being System
Division of Prevention and Community Well-Being



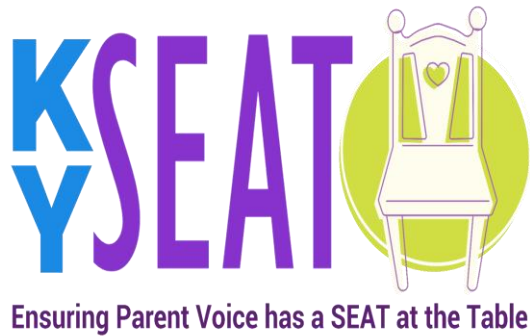


FAMILY FIRST PREVENTION SERVICES ACT: OUR PREVENTION JOURNEY BEGINS

Cross-System Collaboration to Enhance Service Expansion

- More than doubled prevention funding since 2019
- Additional legislative appropriations for prevention
- Partnership with Medicaid for pilot prevention & private child care rates
- Funding primary and secondary prevention efforts
- Demonstration site/grant funding for community response, library partnerships, and community hubs

Engaging Individuals with Lived Experience



- Thriving Families team and DCBS partnered with Kentucky Youth Advocates to launch a statewide birth parent advisory council
- Trusted Advisors
- Peer Support
- Voices of the Commonwealth
- Opportunity for feedback, co-design, voice in policy making

Economic and Concrete Supports

- **Helping families meet their basic needs, stabilize, reduce stress, and promote well-being**
- **Housing, household goods, utility payments, food assistance, transportation**

State level child welfare efforts to increase accessibility to concrete supports:

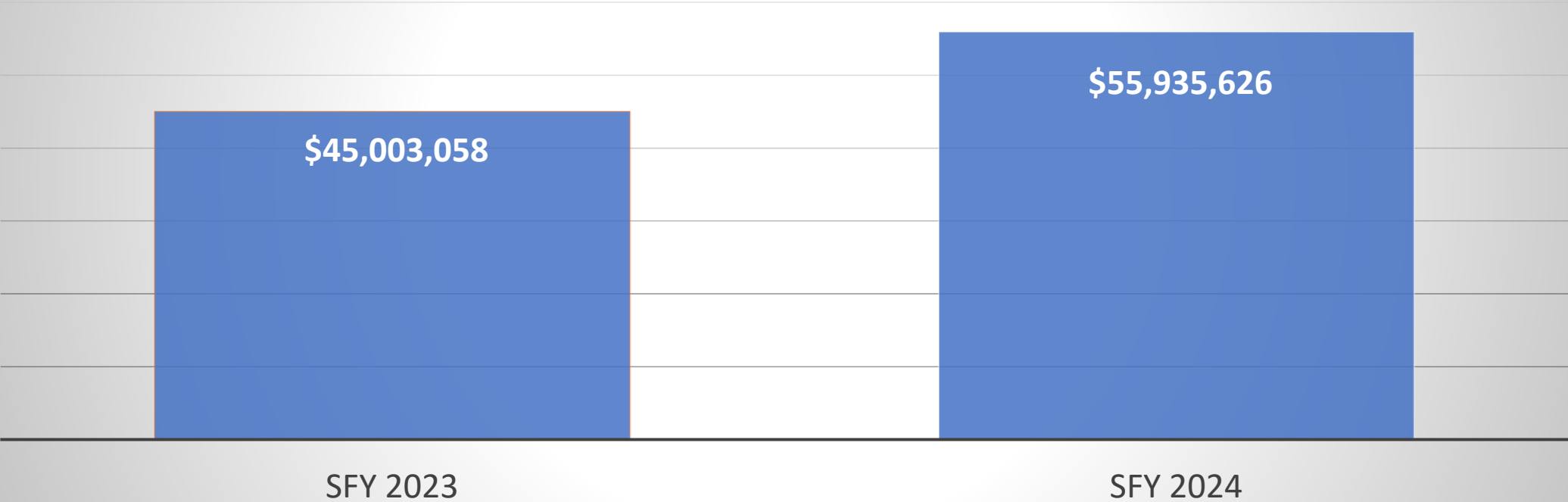
- **Availability to any family with an open child welfare case**
- **Concrete supports doubled in tertiary prevention services**
- **Concrete supports added to prevention services without ongoing child welfare involvement**



Investment in Prevention Services

93% kids remained home safely

Prevention Services Budget (Family Preservation Program - FPP)



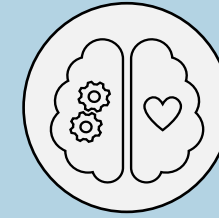
Benefits of Kinship Care

When placed with kin, children experience more stability, less trauma, and stronger connections to family, community, and culture.

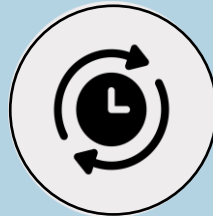
Placement with kin is associated with:



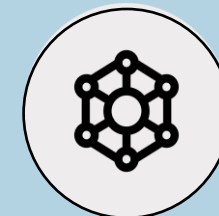
Reduced trauma and improved child well-being



Better behavioral and mental health outcomes



Higher placement stability and improved permanency



Preservation of family, culture, and community

Overview of Subsidized Permanent Custody (SPC)

New permanency option/goal for children who have been placed in an approved relative and fictive kin foster home for 6 months (non-familiar foster parents are not eligible).

Return to parent and adoption must not be an appropriate permanency option.

Primary difference between SPC and Adoption, is that SPC does not require termination of parental rights.

SPC contract must be approved (signed) by the Cabinet, prior to the relative/fictive foster parent receiving custody in court

Benefits for a Caregiver

Caregiver's ability to maintain their identity as a grandmother / aunt/ Sibling

Monthly subsidy that mirrors adoption after permanent custody is granted till the child is 18

Medical card

Possible childcare reimbursement (family needs to be employed to qualify)

Care Plus and medically complex respite may be included

Reunification with parents

Supplemental Nutrition Assistance Program (SNAP)



SNAP increases access to food and nutrition for households across Kentucky



13.4 % of
Kentuckians
participated in SNAP
in April 2024

Approximately
219,000 children
under age 18

Approximately
60,000 older adults



\$1.2 Billion in SNAP benefits was spent at KY retailers in SFY 2024

Housing Supports

Kentucky Transitional Assistance Program (KTAP) is a cash assistance program currently supporting more than 33,000 families with dependent children. (TANF). Financial assistance is used to support the cost of housing, food, and other basic supports

Community Services Block Grant (CSBG) is a federally funded grant supporting anti-poverty services, including rent, mortgage, and utility assistance in all 120 counties (through Community Action). 201,644 individuals and 100,549 households received CSBG assistance last year.

Low-Income Household Energy Assistance Program (LIHEAP) provides a supplemental payment for home heating and cooling costs. It also offers energy crisis supports.

Economic Mobility Supports



Kentucky Works Program (KWP) supports parents with employment and education support, including removing barriers to work and education with transportation, child care, and training



SNAP Education and Training (E&T) supports households with education and training support



Community Services Block Grant also supports employment and training, skill building initiatives in families

Child Care Assistance Program supports working families to afford child care and improve the quality of child care services, including the training of child care providers and development of early learning guidelines. 201,644 individuals and 100,549 households received assistance in SFY 2023.

Employee Child Care Assistance Program supports participating employers in offering child care support for employees, where the state will provide a matching amount to the employer contribution (up to 50%).

KTAP and CSBG also provide child care support for working families.



[This Photo](#) by Unknown Author is licensed under [CC BY](#)

MAKING SURE OUR JOURNEY GETS US TO THE RIGHT DESTINATION:A Multi System Framework

Discussion



Medicaid and DAIL Partnerships: Working together to Promote Inclusion in Kentucky



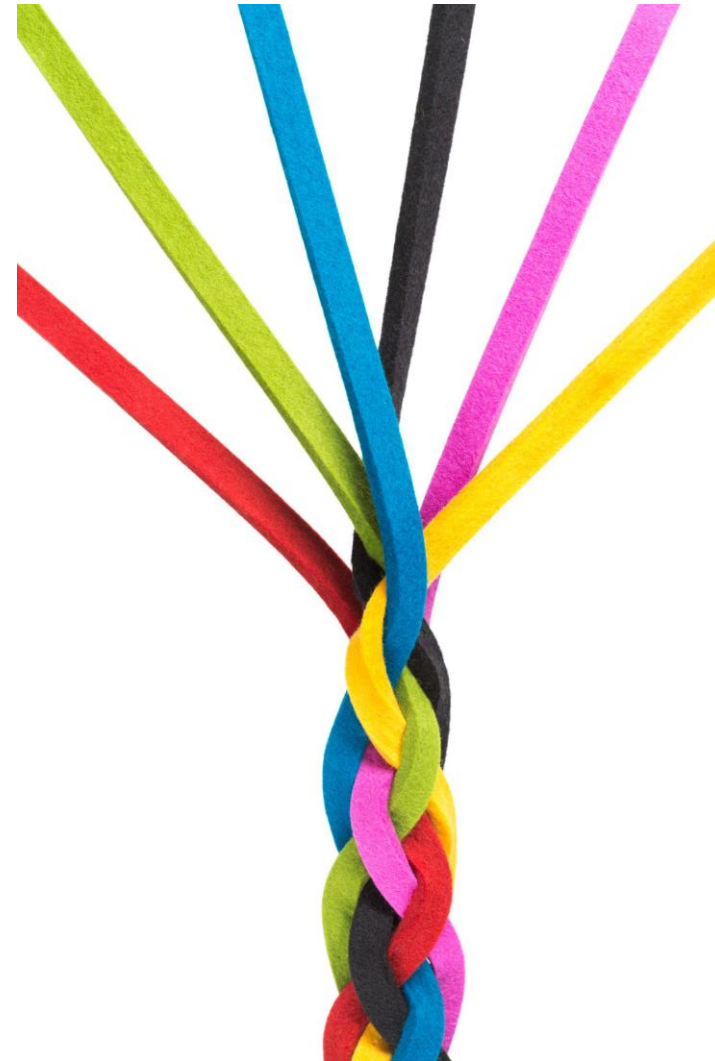


CABINET FOR HEALTH
AND FAMILY SERVICES

Department for Aging and Independent Living

Victoria Elridge, Commissioner

Medicaid and DAIL
Partnerships:
Working Together
to Promote
Inclusion in
Kentucky



DAIL Mission

“Promote the dignity, wellbeing, and independence of Kentuckians and their caregivers.”





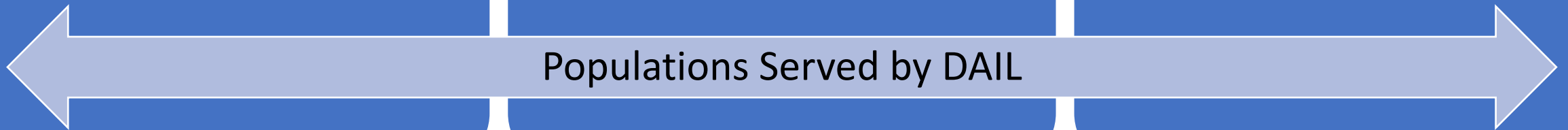
Older Adults



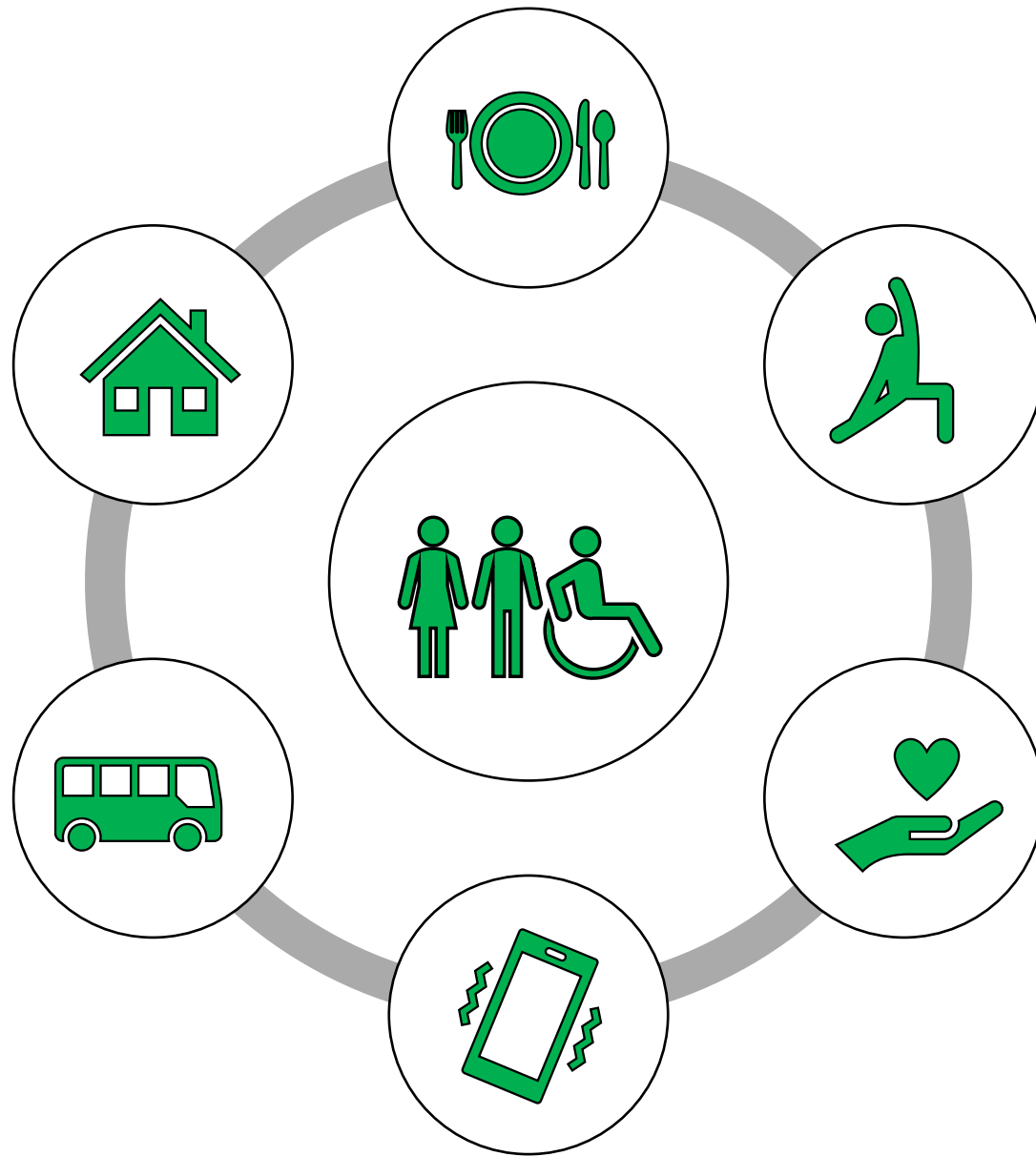
Individuals with
Disabilities



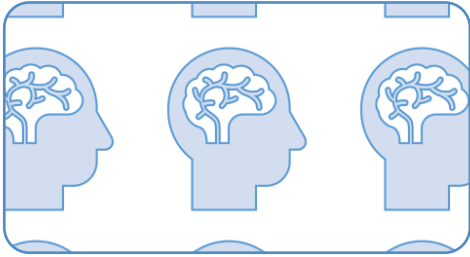
Caregivers



Populations Served by DAIL

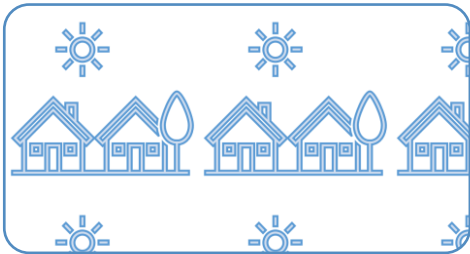


Individuals with Disabilities



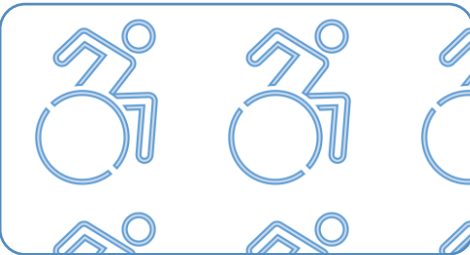
Traumatic Brain Injury Trust Fund

- Flexible Funding for Brain Injury Survivors
- Supports In-Home and Community-Integration Activities



Hart-Supported Living Trust Fund

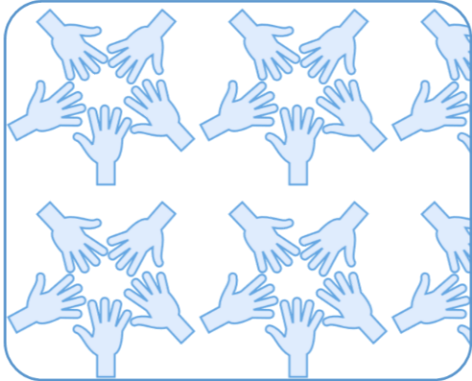
- Grant Funding for Flexible Individualized Services
- Assist Individual with Disability Live in the Community



Personal Care Attendant Program

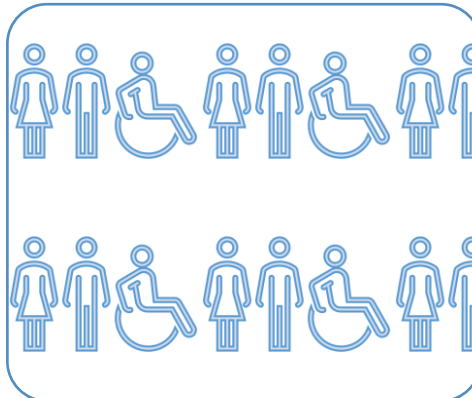
- Individuals with Functional Loss of 2 or More Limbs
- Subsidizes Costs of Personal Attendant Services

Individuals with Disabilities



Participant Directed Services

- For Medicaid waiver participants
- Participant chooses their employees and directs their non-medical services



State Independent Living Council

- Support the 6 Centers for Independent Living
- Increase access and advocacy services for Kentuckians with disabilities

Older Adults

Senior Meals

Free for ages 60 and up; Served at Senior Centers and Home Delivery*

In-Home Services

Home Management, Chore Services, Home Repair, Personal Care

Senior Employment Services

Provides Training and Part-Time Employment Opportunities to Low-Income Kentuckians age 55 and up

Health Promotion & Disease Prevention

Evidence Based Health Education Classes to Prevent Disease Progression and Improve Healthy Living

Older Adults

State Health Insurance Assistance Program

Provides Information, Counseling, and Assistance to Medicare Members

Program for All Inclusive Care for the Elderly

PACE provides comprehensive services to individuals age 55 and up who need nursing facility level of care and prefer to continue living at home

Office of Dementia Services

Supports 75,000 Kentuckians living with dementia and their 150,000 non-paid caregivers

Long-Term Care Ombudsman

Advocate for Residents to Improve Care and Encourage Positive Change At All Levels

Caregivers



Ky Caregiver Support Program

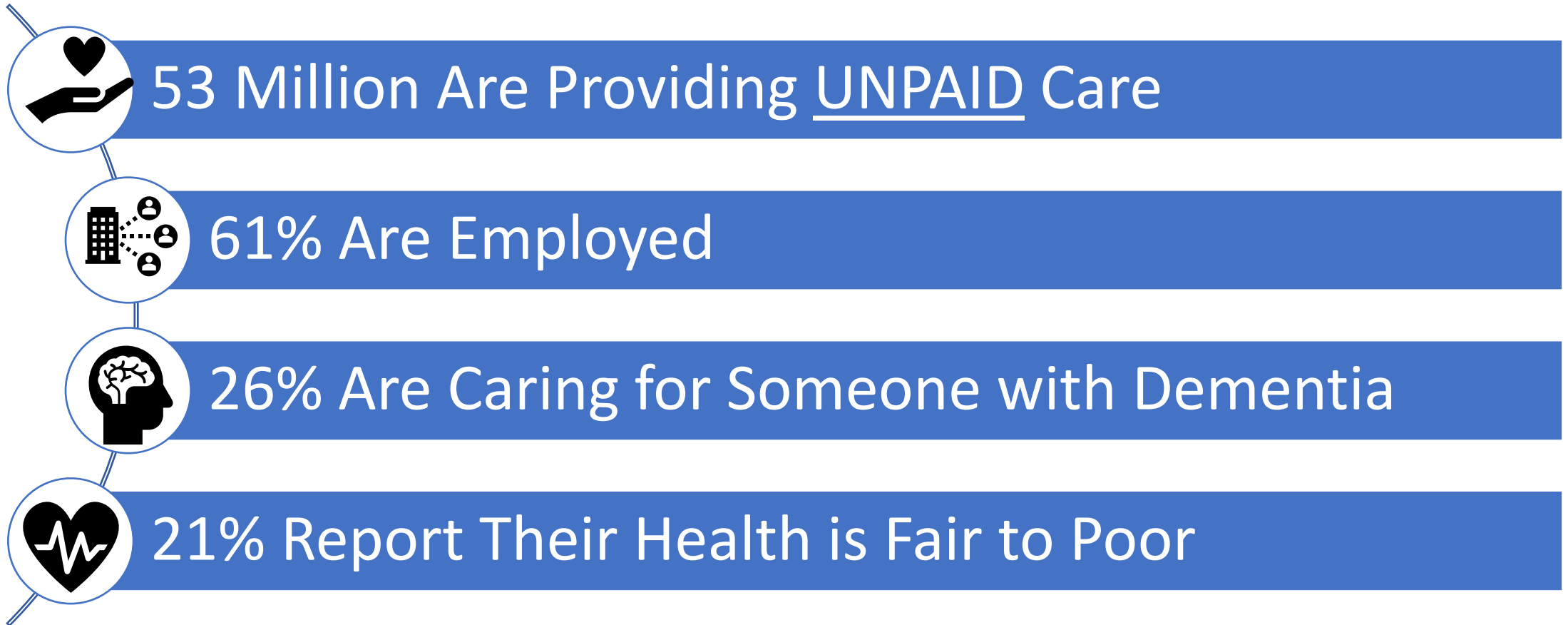
- Grandparents (any age) Raising Grandchildren (18 and Under)
- Legal Custody of Child
- Support Services Including Information and Assistance and Support Groups
- Grant to Purchase Clothing, School Supplies, Medical Needs
- Household Income 150% Below Federal Poverty Level



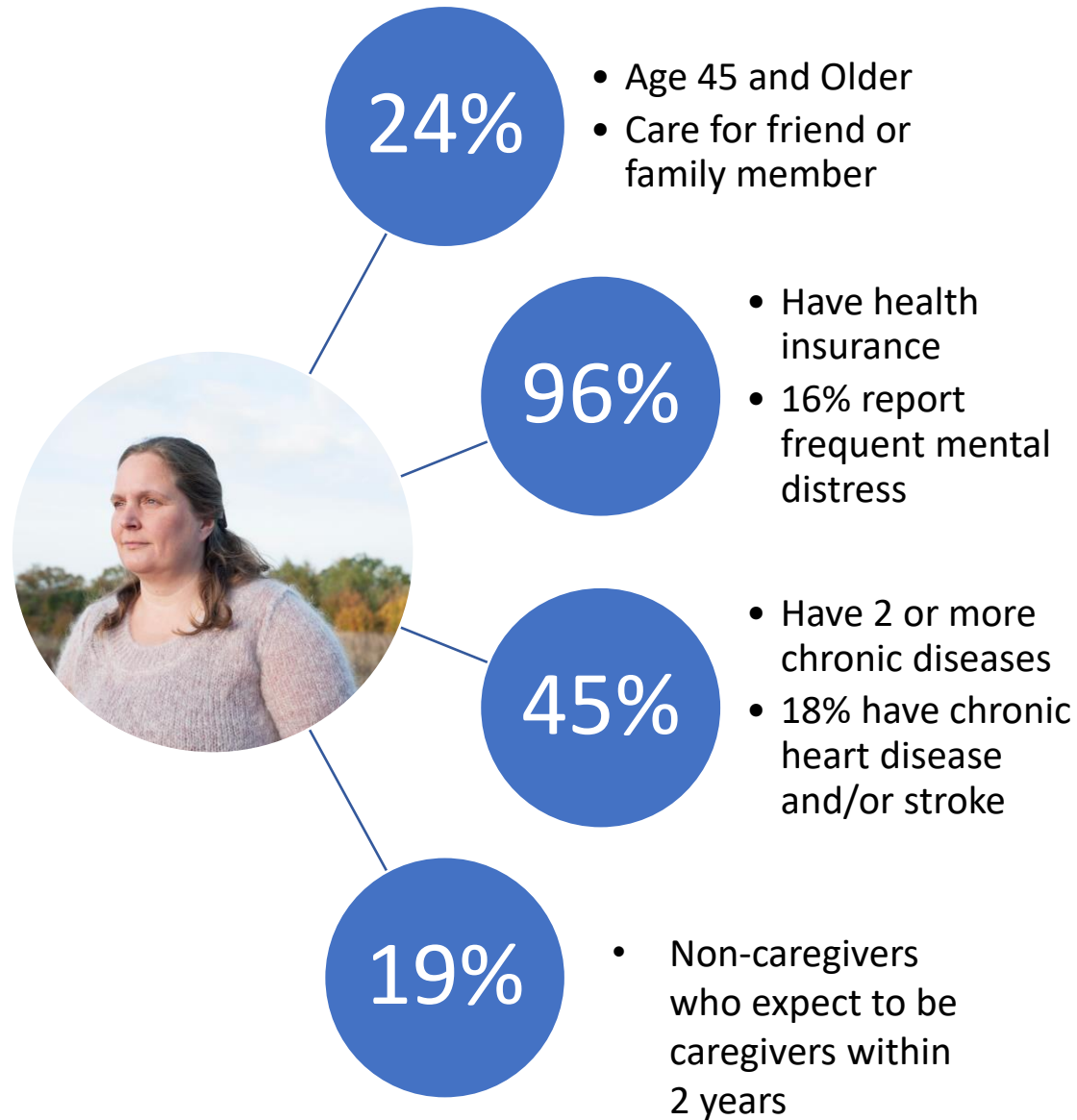
National Family Caregiver Program

- Grandparents (55 and up) Raising Grandchildren (18 and Under)
- Informal Caregiver Caring for Older Individual (age 60 and Up)
- Informal Caregiver Caring for Individual with Dementia
- Provides Flexible Services and Supports
- Voucher, Counseling, Training, and Respite Support

Family Caregivers



Kentucky's Caregivers



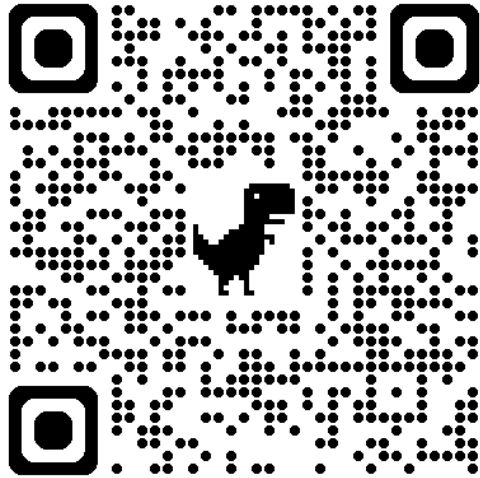
Who cares for the caregiver?



How Your Organization Can Help

- Identify Who is a Caregiver
- Screen for Caregiver Burden
- Encourage Caregivers to Get Regular Check-Ups
- Support Preventive Services and Engage in Self-Care to Maintain Health
- Ensure Caregivers Have Access to Self-management Programs to Maintain Their Health

Thank You



502-564-6930



Victoria.Elridge@ky.gov