

Kentucky's Section 1115 Reentry Demonstration



Justice Involved Individuals (JII) are at higher risk for poor health outcomes, injury, and death than the general public.



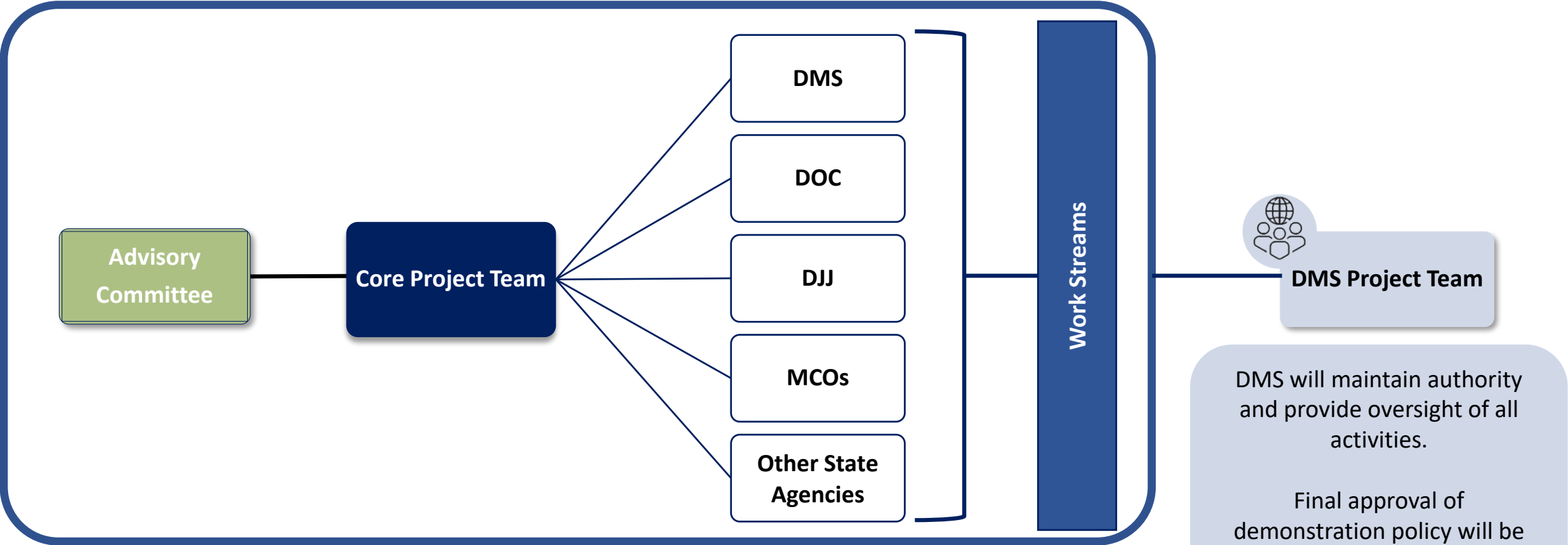
CMS **approved** Kentucky's 1115 Reentry Demonstration on July 2, 2024.



Provide Medicaid coverage for certain transitional services to JIIs in designated public institution(s), ensuring continuity of health care coverage pre- and post-release, and facilitate linkages to medical, behavioral health and health related social needs upon release.

Reentry Program	Adults	Juveniles
Enrollment & Suspension	<ul style="list-style-type: none"> Initiate Medicaid application process for incarcerated individuals. Begin no later than 60 days before expected release date. Once enrolled, suspend, not terminate eligibility. 	<ul style="list-style-type: none"> Initiate Medicaid application process for confined youth. Begin no later than 60 days before expected release date. Once enrolled, suspend, not terminate eligibility.
Pre-Release Services Timeframe	60 Days	60 Days
Pre-Release Service Facilities/Locations	14 State Prisons	DJJ Youth Development Centers (Youth adjudicated and committed to DJJ custody)
Benefit & Service Package	<ul style="list-style-type: none"> Case Management. Medication Assisted Treatment (MAT) – Requires SUD diagnosis. 30-day supply of medication. 	<ul style="list-style-type: none"> Case Management. Medication Assisted Treatment (MAT) – Requires SUD diagnosis. 30-day supply of medication.
Service Delivery Methods	In-person and Telehealth	In-person and Telehealth

Reentry Project Oversight



Advisory Committee

- Provides Executive-level oversight and strategic direction to the project team.
- Ensures alignment of the broader Reentry goals and objectives.

Core Project Team

- Focused on implementation tasks and project needs.
- Supports policy development and strategy execution.
- Executes strategies according to policy.
- Provides direct oversight of the project work streams.

DMS will maintain authority and provide oversight of all activities.

Final approval of demonstration policy will be aligned to CMS Guidance.