

TEAM KENTUCKY[®]

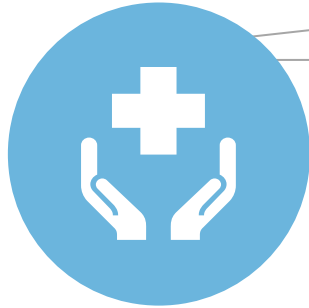
CABINET FOR HEALTH
AND FAMILY SERVICES

MAC

March 27, 2025

What is Families First?

A comprehensive, multi-year initiative aimed at enhancing the existing system of care for all Kentucky children and youth.



SHINE KY

Enhancing access to and delivery of school-based services for Medicaid and CHIP-eligible and enrolled students.



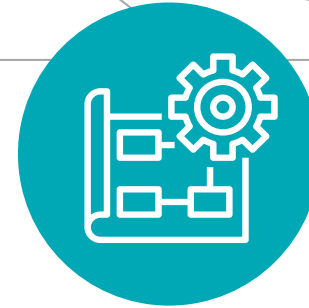
Kentucky CARES

Services to support community reentry and improve care transitions for justice-involved youth.



Funding Modernization

Restructuring of Medicaid payment for medically necessary treatment services.



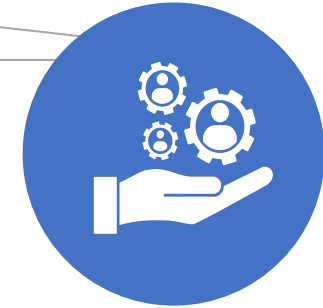
CHI Mapping Tool

Tracking and reporting of child health initiatives.



Children's Waiver

Locate appropriate resources and housing for children and youth in need of placement.



High Needs Service Delivery

Service design to meet the child-centric care, support services, housing, custody and placement, and other health-related social needs.

Families First seeks to create a unified, integrated, and child-centered care framework that addresses the diverse needs of Kentucky's young population. By enhancing coordination across health, education, social services, and other key sectors, Families First aims to ensure that every child and youth receives the necessary support to achieve their full potential.

Families First Vision

A New Future for Kentucky's Children and Youth



Serve Holistic Needs of all Kentucky Children and Youth

Address dated and fragmented care for children and youth to meet current needs and improve health outcomes.



Enable Response

Tackle urgent issues associated with high needs children and youth who require more effective care solutions.



Process Coordination Role

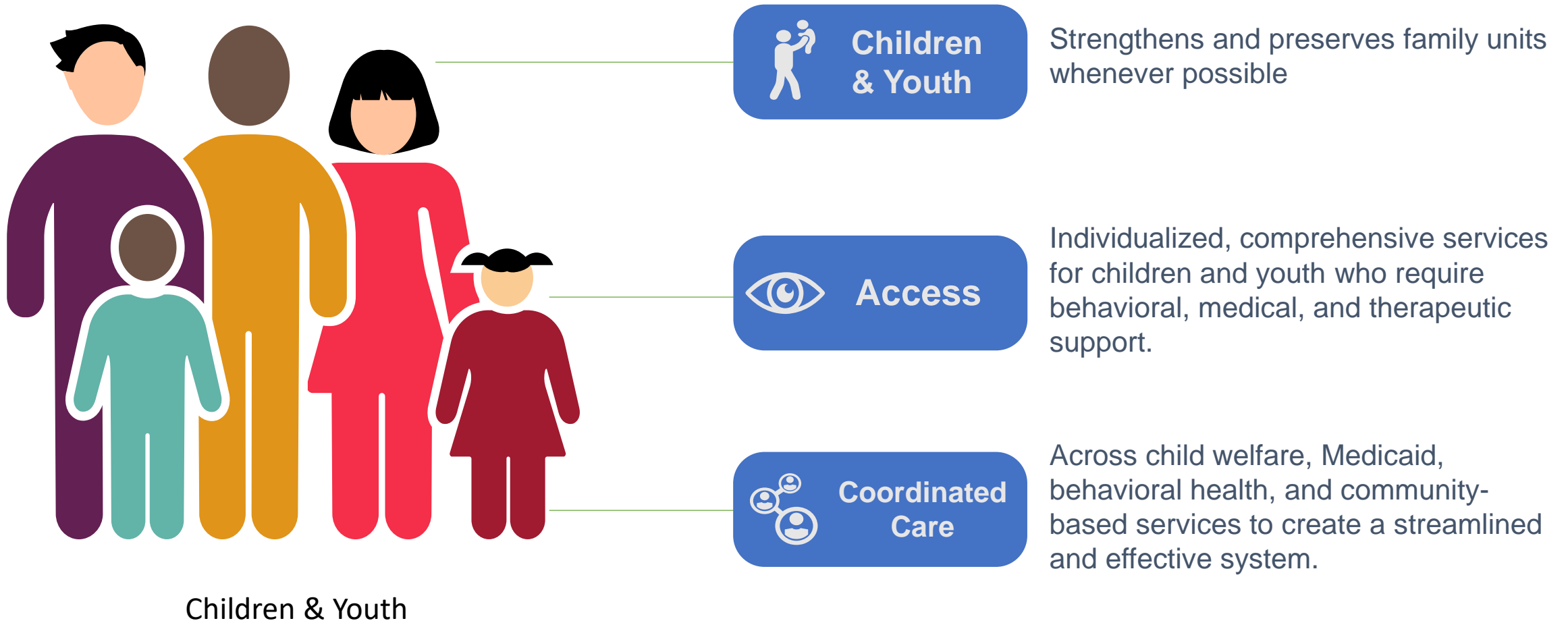
Unify efforts across multiple Kentucky cabinets and state agencies to create a cohesive service delivery system.



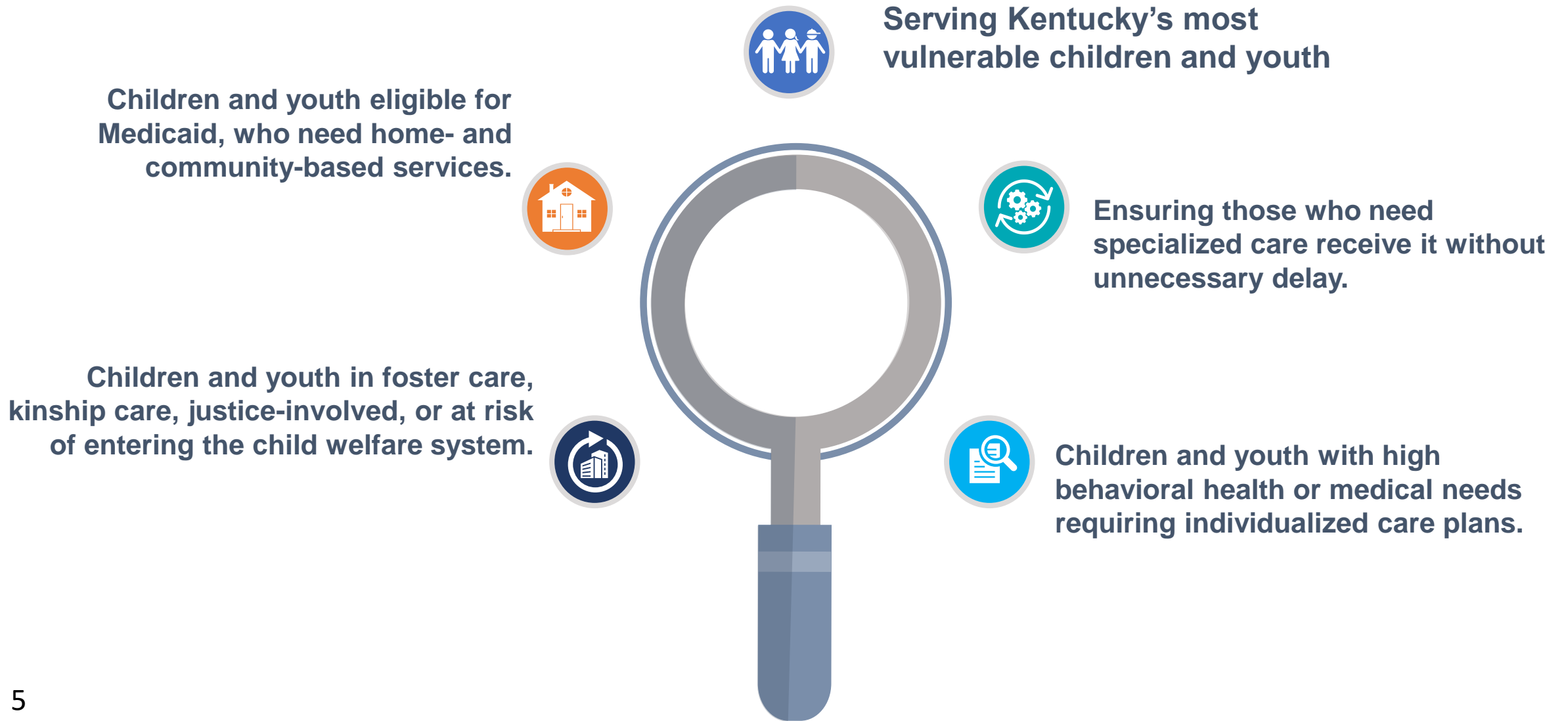
Encourage Collaboration

Initiate a collaborative redesign of service delivery models to ensure more effective support for children and families.

Families First Priorities



Families First Focuses On



Families First Improves

Families First introduces a more integrated and responsive child and youth service system that addresses gaps in care, reduces wait times, and expands service capacity statewide. Here's how:

Expanded Service Access

- Increased access to comprehensive child and youth services—no more waiting for essential care.
- A focus on preventive services to support families before crises occur.
- More provider options, ensuring children and youth receive the specialized care they need closer to home.

Use of Funding Models

- Utilizing Medicaid and other funding sources to expand coverage and reduce financial barriers for families.
- Enhanced reimbursement rates for providers, ensuring sustainability and increasing provider participation.

Care Coordination

- Streamlined child welfare, health care, and behavioral health services.
- Cross-agency collaboration, foster care services, and other key partners.
- Child and youth-centered case management, ensuring that children receive consistent, personalized care from a coordinated team of professionals.

Families First: Key Features

