



CABINET FOR HEALTH  
AND FAMILY SERVICES

# Kentucky Department for Medicaid Services

Strengthening Health Integration in Education  
for Kentucky Students (SHINE KY) Project

July 2024

# Agenda

---

- SHINE KY Project Overview
- Kentucky School-Based Services History
- SHINE KY Project Goals & Strategies
- Project Budget
- Year 1 Work Plan, & Timeline, and Immediate Next Steps

# School-Based Services Grant Award Overview

## Grant Overview

### **Background**

Through the Bipartisan Safer Communities Act (BSCA) the Centers for Medicare & Medicaid Services (CMS) awarded DMS a \$2.5 million school-based Medicaid service enhancement cooperative agreement.

### **Project Duration**

The period of performance is 36 months with three 12-month payment increments.

### **Award Highlight**

DMS was one of three awardees within the enhancement category in a national bid open to all state Medicaid agencies.

### **Partnership**

The grant application was based upon partnership between the Kentucky Lieutenant Governor's Office, Department for Medicaid Services, Department of Education, and Department for Behavioral Health, Developmental, and Intellectual Disabilities.

## Grant Funding Categories

### **Implementation**

States that have yet to expand the coverage of and billing for Medicaid and CHIP services provided in schools beyond that which is provided pursuant to a student's Individualized Education Plan (IEP)/Individualized Family Service Plan (IFSP).

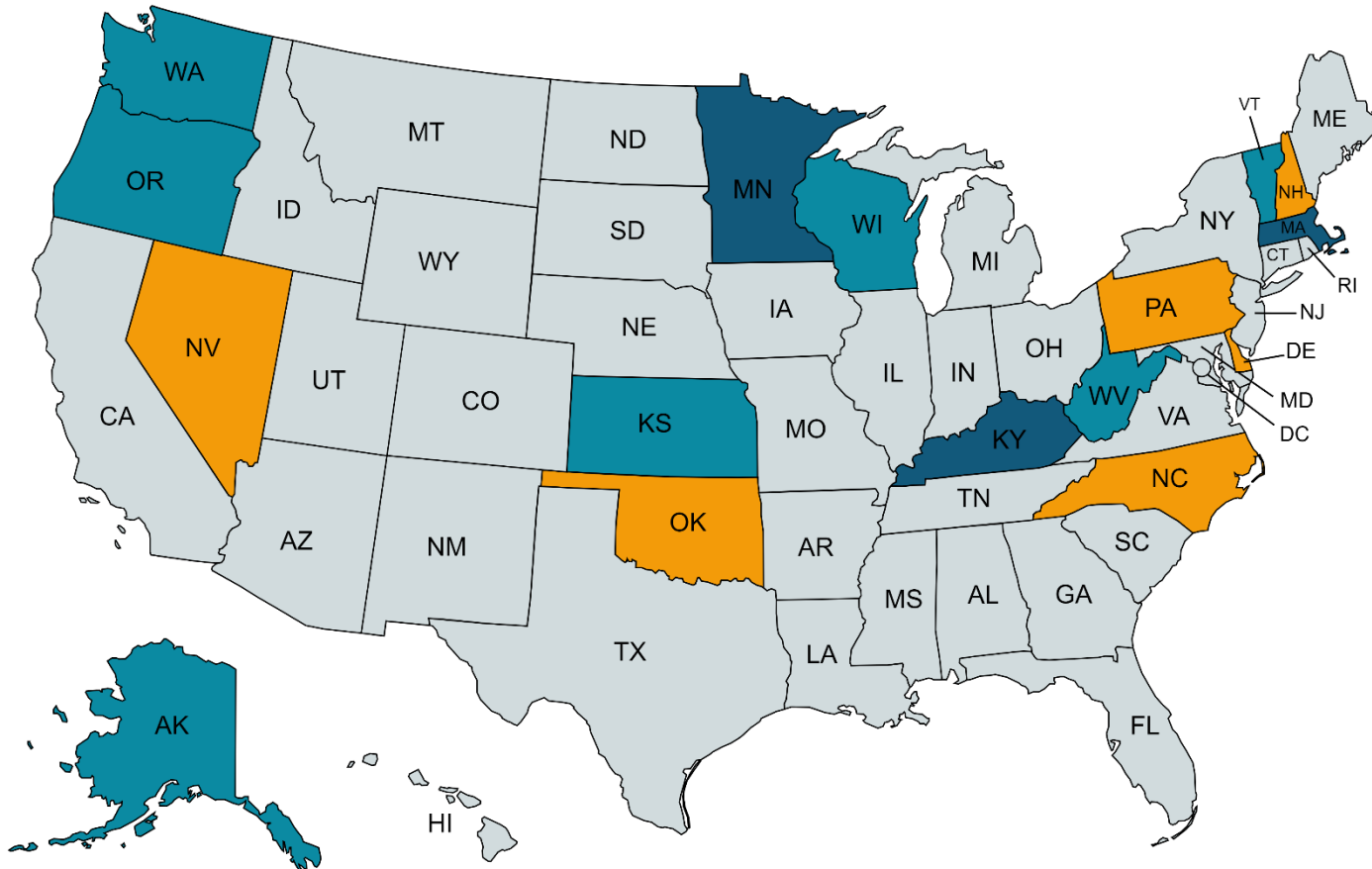
### **Expansion**

States that have expanded the coverage and billing of Medicaid or CHIP services provided in schools beyond what is provided pursuant to a student's IEP/IFSP.

### **Enhancement**

States that have expanded the coverage and billing of Medicaid services provided in schools to include any Medicaid- or CHIP-covered service provided regardless of whether that service is provided pursuant to a student's IEP/IFSP, 504 Plan, or any other Medicaid or CHIP enrolled beneficiary.

# School-Based Services Grant State Participants



## Enhancement

- Kentucky Cabinet for Health Services
- Massachusetts Executive Office of Health and Human Services
- Minnesota Department of Health Services

## Expansion

- Delaware Department of Health and Social Services
- Nevada Department of Health and Human Services
- New Hampshire Department of Health & Human Services
- North Carolina Department of Health & Human Services
- Oklahoma Health Care Authority
- Pennsylvania Department of Human Services

## Implementation

- Alaska Department of Health
- Kansas Department of Health and Environment
- Maryland Department of Health
- Oregon Health Authority
- Rhode Island Executive Office of Health and Human Services
- Vermont Agency of Health Services
- Washington Health Care Authority
- West Virginia Department of Human Services
- Wisconsin Department of Health Services

# Kentucky School-Based Services History

## 2019 State Plan Amendment

- Extended SBS for all children and adolescents enrolled in the Medicaid program.
- Expanded coverage beyond the Individuals with Disabilities and Education Act requirements of Medicaid coverage for IEP/IFSP necessary services.

## 2020 State Plan Amendment

- Revised the school-based services reimbursement methodology.
- Final reimbursement for school-based services are based on cost reports submitted.
- All qualified providers of non-IEP/IFSP services approved within the Medicaid state plan are paid the same as providers and services outside the school-based setting (same fee schedules).

## 2024-2027 CMS SBS Enhancement Grant

- Focused on increasing provider and staff capacity to allow for greater access to behavioral health and other healthcare services in school settings.
- Strengthening school-based health care service infrastructure to increase access to behavioral health services through telehealth usage.

# SHINE KY Project Goals

## Goal 1:

Enhance and strengthen Kentucky's SBS infrastructure to increase access to behavioral and other health care services in school settings through increasing provider and staff capacity by at least 40% within 3 years.

- **Objective 1.1:** Reduce/eliminate provider billing barriers.
- **Objective 1.2:** Increase overall capacity of behavioral health providers in a school setting.
- **Objective 1.3:** Increase availability of reimbursement opportunities to expand behavioral health services across the care continuum.

## Goal 2:

Enhance and strengthen Kentucky's SBS infrastructure to increase access to behavioral health care services through availability of telehealth by 25% within 3 years.

- **Objective 2.1:** Develop and implement a telehealth program to support access to behavioral health services and provider education.

# School-Based Services Enhancement Strategies



## Targeted Clinical & Admin Staff Recruitment

- Directly support for the hiring of clinical and administrative staff within school districts.



## Launching the SHINE KY Grant Program

- Initiate a grant program to support local school communities with integration and evaluation of enhanced behavioral health services, providing a model for broader implementation. Expecting \$100,000 grants to 7 recipients.



## Training & Capacity Building to Increase Awareness of Expanded Access Services & Billing

- Provide additional training to districts and providers regarding covered services, parental consent, and provide specialized training as needed.



## Outreach & Community Engagement to Increase Parental Involvement

- Develop and implement targeted outreach to educate students, parents, and school staff as well as expand community engagement efforts.



## Enhancing Physical & Technological Infrastructure

- Enhance physical and technological infrastructure within school-based settings including renovations for privacy in behavioral health consultations, and necessary systems, training, and resources.



## Supporting Sustainability Planning & Programmatic Evaluation

- Continue comprehensive program evaluation to make informed decisions

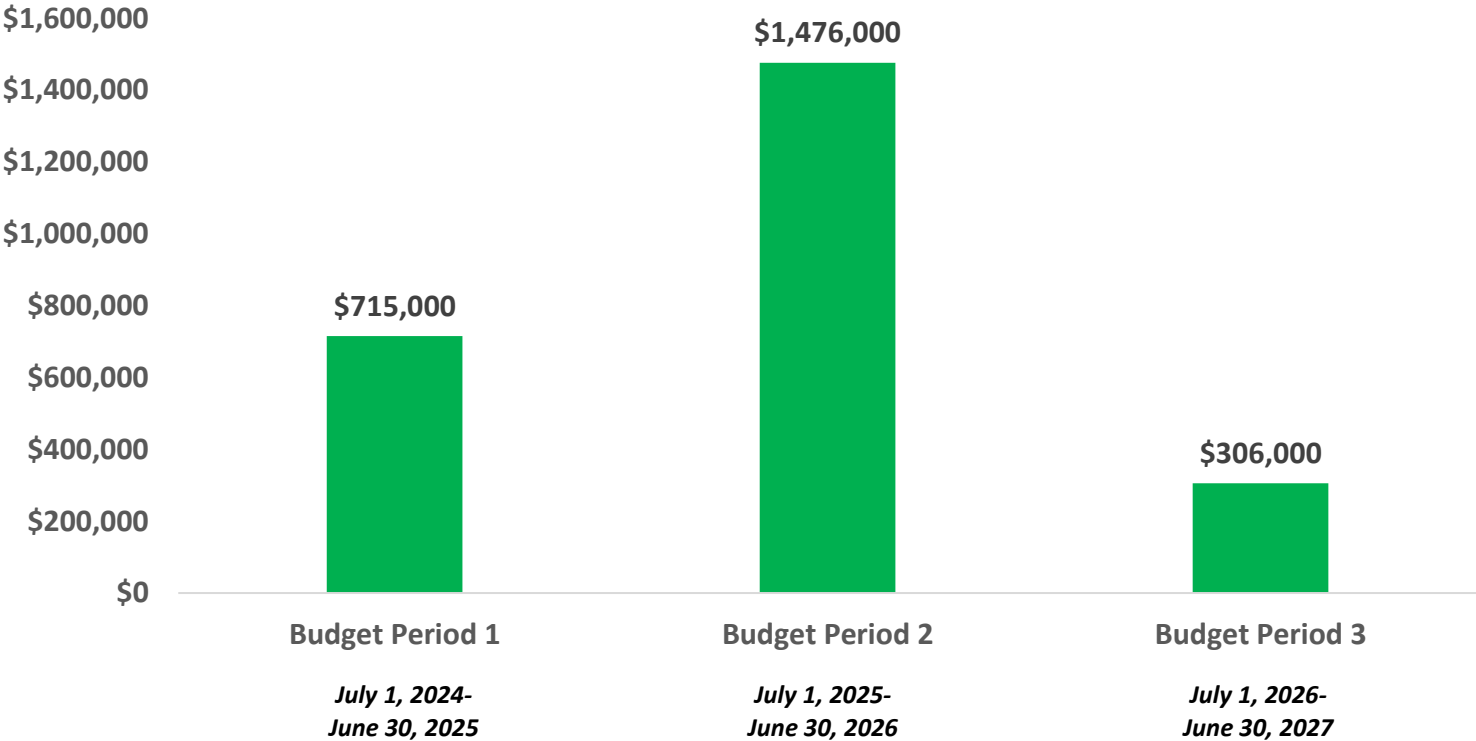
# Project Budget

## Budgeted Expenses Across Three Budget Periods

**Total Amount Awarded:  
\$2.5 Million**



■ Budgeted Expenses By Operational Year

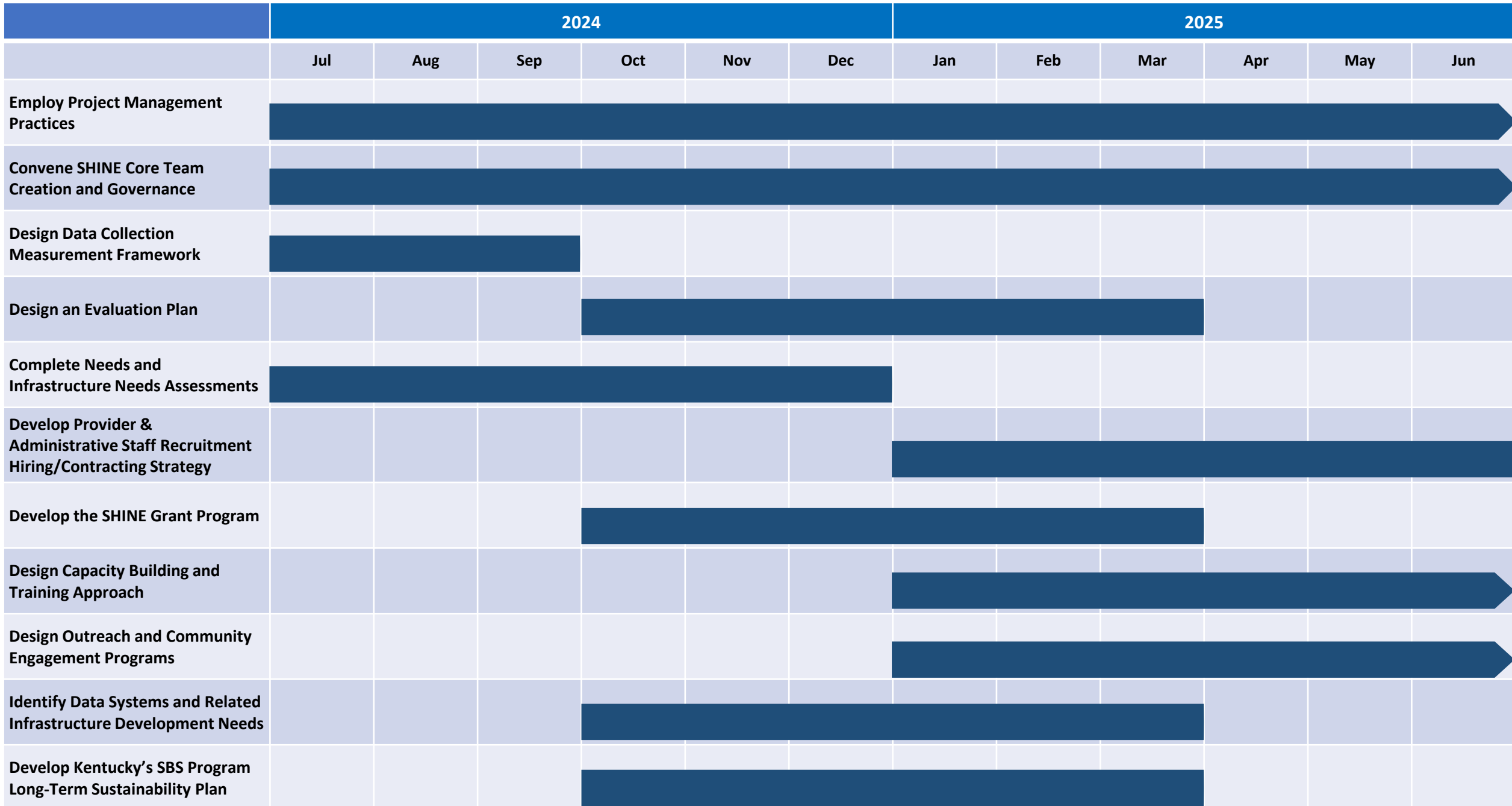




# Planning Period Work Plan

Initial Planning Period Activity	Month Timeframe			
	3	6	9	12
1. Employ Project Management Practices.	◆	◆	◆	◆
2. Convene SHINE Core Team Creation and Governance Continuation.	◆	◆	◆	◆
3. Design Data Collection Measurement Framework.	◆			
4. Design an Evaluation Plan.		◆	◆	
5. Complete Needs and Infrastructure Needs Assessments.	◆	◆		
6. Develop the Provider and Administrative Staff Recruitment Hiring/Contracting Strategy.			◆	◆
7. Develop the SHINE Grant Program.		◆	◆	
8. Design Capacity Building and Training Approach.			◆	◆
9. Design Outreach and Community Engagement Programs.			◆	◆
10. Identify Data Systems and Related Infrastructure Development Needs.		◆	◆	
11. Develop Kentucky's SBS Program Long-Term Sustainability Plan.		◆	◆	

# Kentucky SBS Grant Project Timeline



# Immediate Next Steps: Needs & Infrastructure Final Assessment

Initiate the stakeholder input process to inform program and infrastructure needs assessments, and identify gaps and opportunities in Medicaid and CHIP SBS, with a focus on behavioral health and equitable access to care.

August 2024 to November 2024



November 2024 to December 2024

