



STATE PROFILE REPORT  
06.04.2021

# KENTUCKY

## STATE SYNOPSIS

	LAST WEEK	CHANGE FROM PREVIOUS WEEK
RATE OF NEW COVID-19 CASES PER 100,000	46	-28%
VIRAL (RT-PCR) LAB TEST POSITIVITY RATE	3.3%	+0.0%
NEW CONFIRMED COVID-19 HOSPITAL ADMISSIONS / 100 BEDS	5	-4%
RATE OF NEW COVID-19 DEATHS PER 100,000	1.1	+2%
COMMUNITY TRANSMISSION LEVEL	MODERATE TRANSMISSION	
PEOPLE RECEIVED AT LEAST 1 DOSE	2,091,049 people	46.8% of total pop.
PEOPLE 18+ RECEIVED AT LEAST 1 DOSE	2,025,603 people	58.5% of 18+ pop.
PEOPLE FULLY VACCINATED	1,734,544 people	38.8% of total pop.
PEOPLE 18+ FULLY VACCINATED	1,714,794 people	49.5% of 18+ pop.

### SARS-CoV-2 Variants of Concern

- The following proportions of variants of concern have been identified in [Kentucky](#): B.1.1.7 (76.4%), B.1.427/B.1.429 (0.8%), P.1 (4.5%)





# KENTUCKY

STATE PROFILE REPORT | 06.04.2021

	STATE	STATE, % CHANGE FROM PREVIOUS WEEK	FEMA/HHS REGION	UNITED STATES
NEW COVID-19 CASES (RATE PER 100,000)	2,058 (46)	-28%	25,258 (38)	97,352 (29)
VIRAL (RT-PCR) LAB TEST POSITIVITY RATE	3.3%	+0.0%*	3.7%	2.2%
TOTAL VIRAL (RT-PCR) LAB TESTS (TESTS PER 100,000)	51,289** (1,148**)	-16%**	801,452** (1,198**)	5,540,241** (1,669**)
NEW COVID-19 DEATHS (RATE PER 100,000)	47 (1.1)	+2%	584 (0.9)	2,320 (0.7)
SNFs WITH ≥1 NEW RESIDENT COVID-19 CASE	2%†	-1%*	3%	2%
SNFs WITH ≥1 NEW STAFF COVID-19 CASE	3%†	-6%*	6%	5%
SNFs WITH ≥1 NEW RESIDENT COVID-19 DEATH	0%†	-1%*	1%	1%
CONFIRMED AND SUSPECTED NEW COVID-19 HOSPITAL ADMISSIONS (RATE PER 100 BEDS)	991 (8)	-7% (-7%)	8,908 (6)	46,838 (7)
CONFIRMED NEW COVID-19 HOSPITAL ADMISSIONS (RATE PER 100 BEDS)	679 (5)	-4% (-4%)	4,900 (3)	17,535 (2)
NUMBER OF HOSPITALS WITH SUPPLY SHORTAGES (PERCENT)	0 (0%)	N/A	52 (5%)	318 (6%)
NUMBER OF HOSPITALS WITH STAFF SHORTAGES (PERCENT)	0 (0%)	N/A	101 (10%)	613 (12%)

\* Indicates absolute change in percentage points.

\*\* Due to delayed reporting, this figure may underestimate total diagnostic tests and week-on-week changes in diagnostic tests.

† 91% of facilities reported during the most current week.

## DATA SOURCES

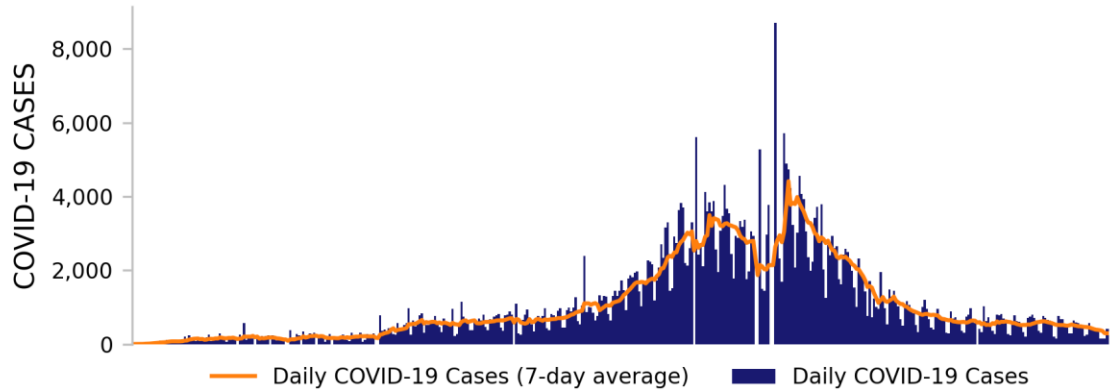
**Note:** Some dates may have incomplete data due to delays in reporting. Data may be backfilled over time, resulting in week-to-week changes.**Cases and Deaths:** State values are aggregated data provided by the states to the CDC. Historical reports of cases and deaths exceeding 1% of the total new cases or deaths reported in the US that day have been excluded. Data is through 6/3/2021; previous week is from 5/21 to 5/27.**Testing:** CELR (COVID-19 Electronic Lab Reporting) state health department-reported data. Test positivity through 6/1/2021; previous week is from 5/19 to 5/25. Test volume through 5/28/2021; previous week is from 5/15 to 5/21.**SNFs:** Skilled nursing facilities. National Healthcare Safety Network. Data is through 5/30/2021, previous week is from 5/17 to 5/23.**Admissions:** Unified Hospitals Dataset in HHS Protect. Data is through 6/2, previous week is from 5/20 to 5/26.**Shortages:** Unified Hospitals Dataset in HHS Protect. Values presented show the latest reports from hospitals in the week ending 6/2/2021 for staffing and the week ending 6/2/2021 for supplies.**METHODS:** Details available on last two pages of report.



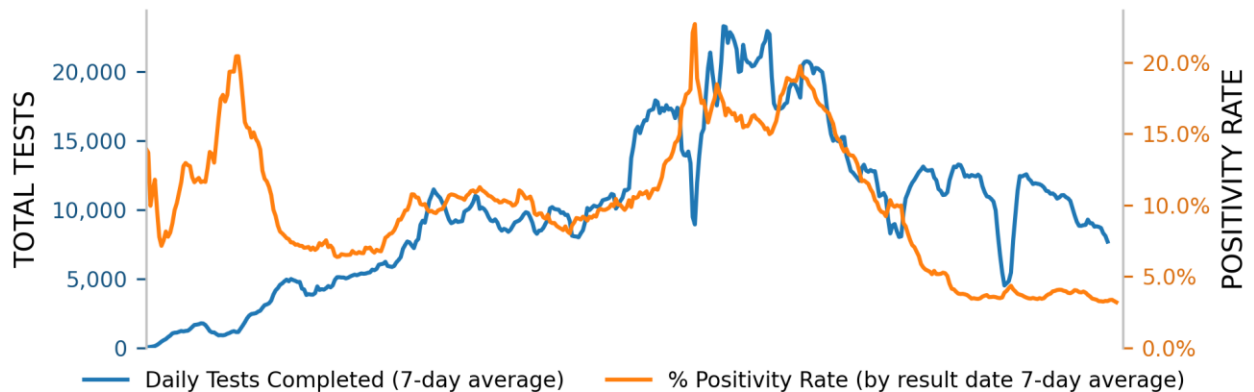
# KENTUCKY

STATE PROFILE REPORT | 06.04.2021

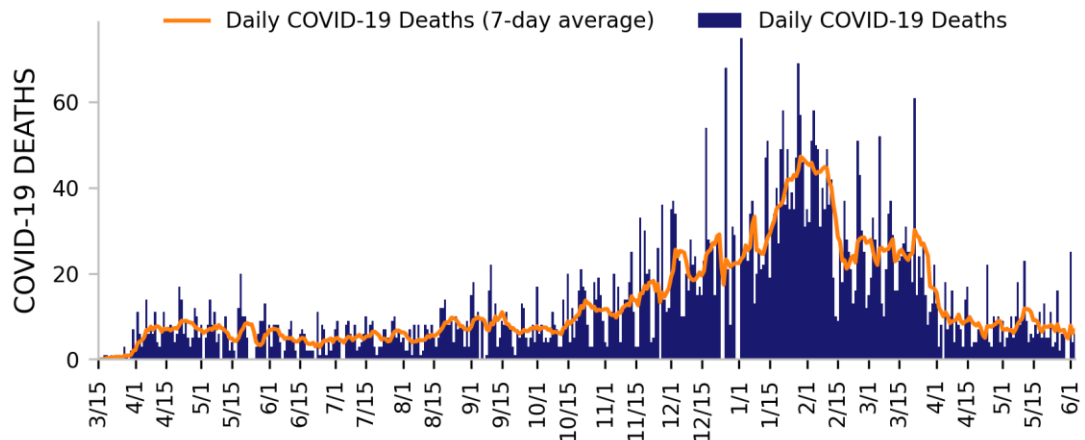
## NEW CASES



## TESTING



## NEW DEATHS



### DATA SOURCES

**Note:** Some dates may have incomplete data due to delays in reporting. Data may be backfilled over time, resulting in week-to-week changes. All three trends share the same horizontal axis shown on the bottom figure.

**Cases and Deaths:** State values are aggregated data provided by the states to the CDC. Historical cases and deaths exceeding 1% of the total new cases or deaths reported in the US that day have been excluded. Data is through 6/3/2021.

**Testing:** CELR (COVID-19 Electronic Lab Reporting) state health department-reported data. Test positivity through 6/1/2021. Test volume through 5/28/2021.

**METHODS:** Details available on last two pages of report.



# KENTUCKY

STATE PROFILE REPORT | 06.04.2021

## STATE VACCINATION SUMMARY

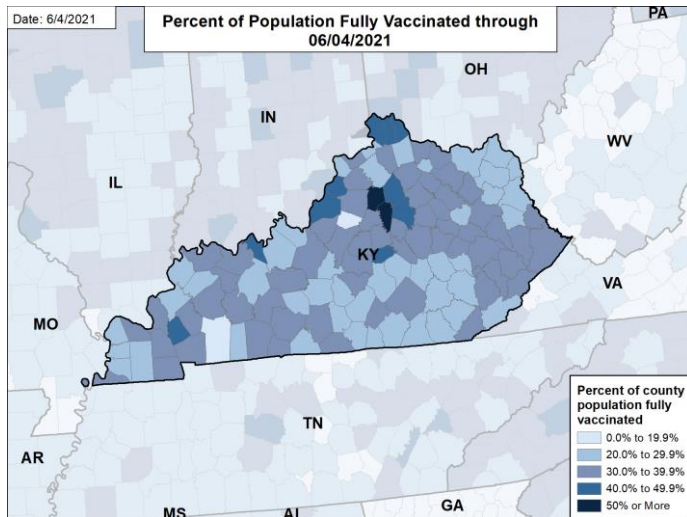
### DOSES DELIVERED

4,347,275  
97,305 per 100k

### DOSES ADMINISTERED

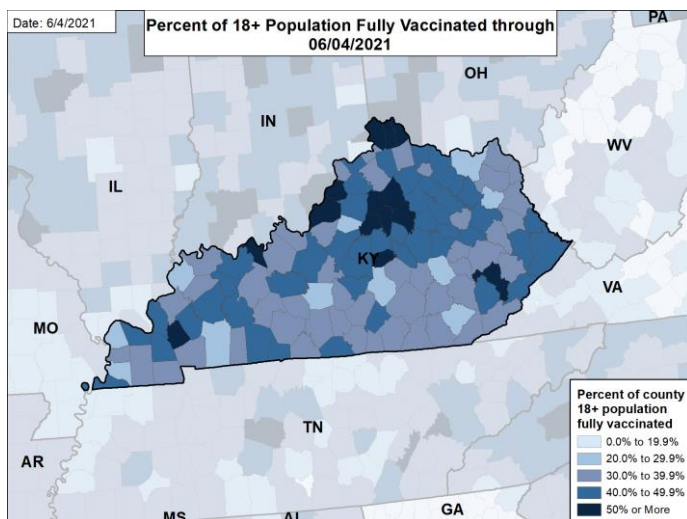
3,680,332  
82,377 per 100k

### PERCENT OF POPULATION FULLY VACCINATED

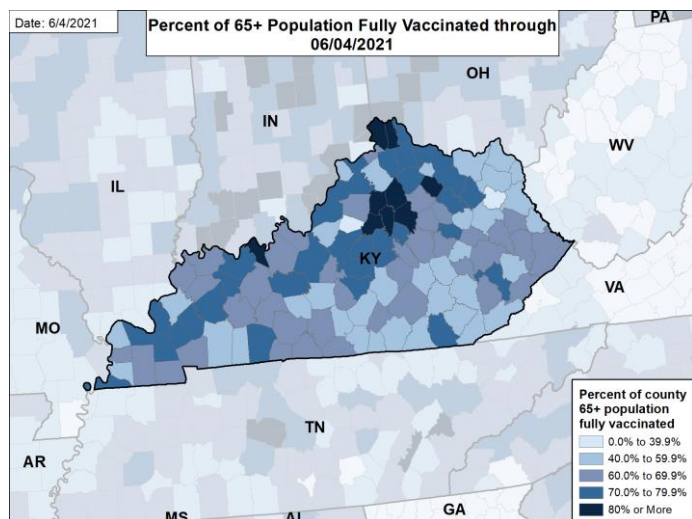


	RECEIVED AT LEAST ONE DOSE	FULLY VACCINATED
<b>ALL PEOPLE</b>	2,091,049 46.8% of total pop.	1,734,544 38.8% of total pop.
<b>PEOPLE 12-17</b>	65,147 19.1% of 12-17 pop.	19,716 5.8% of 12-17 pop.
<b>PEOPLE 18+</b>	2,025,603 58.5% of 18+ pop.	1,714,794 49.5% of 18+ pop.
<b>PEOPLE 65+</b>	631,820 84.2% of 65+ pop.	563,144 75.0% of 65+ pop.

### PERCENT OF 18+ POPULATION FULLY VACCINATED



### PERCENT OF 65+ POPULATION FULLY VACCINATED



### DATA SOURCES

County reporting completeness for Kentucky is 93.3%.

**Vaccinations:** [CDC COVID Data Tracker](#). Data includes the Moderna, Pfizer BioNTech, and J&J/Janssen COVID-19 vaccines and reflects current data available as of 15:18 EDT on 06/04/2021. Data last updated 06:00 EDT on 06/04/2021. Persons who are fully vaccinated include those who have received both doses of the Moderna or Pfizer-BioNTech vaccine as well as those who have received one dose of the J&J/Janssen vaccine. Allocations are made pro rata (equal based on population) from which jurisdictions are then to order.

**METHODS:** Details available on last two pages of report.

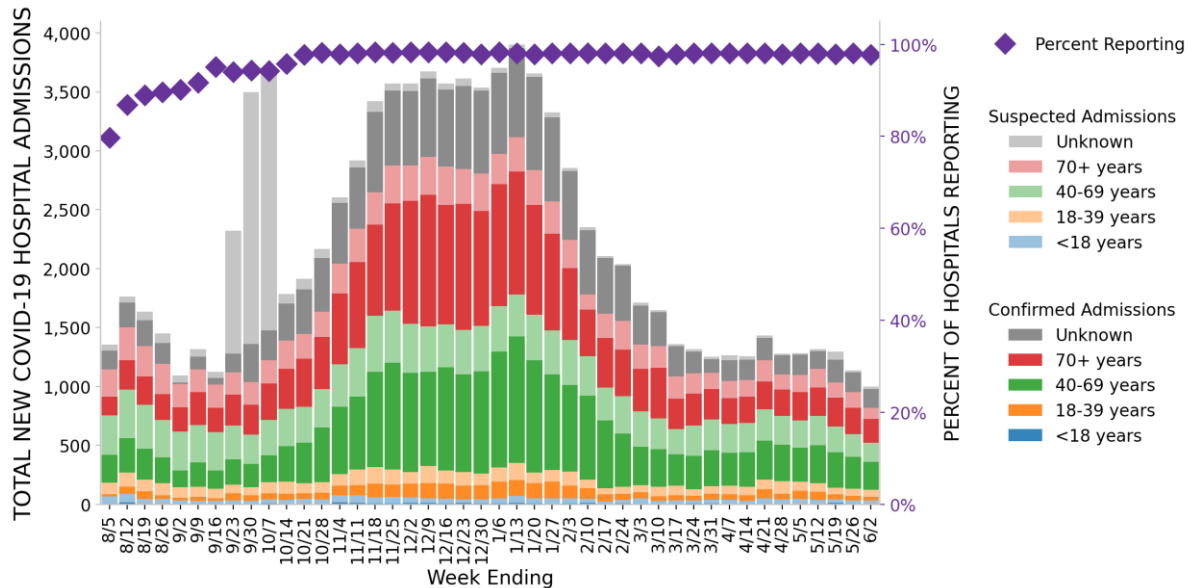


# KENTUCKY

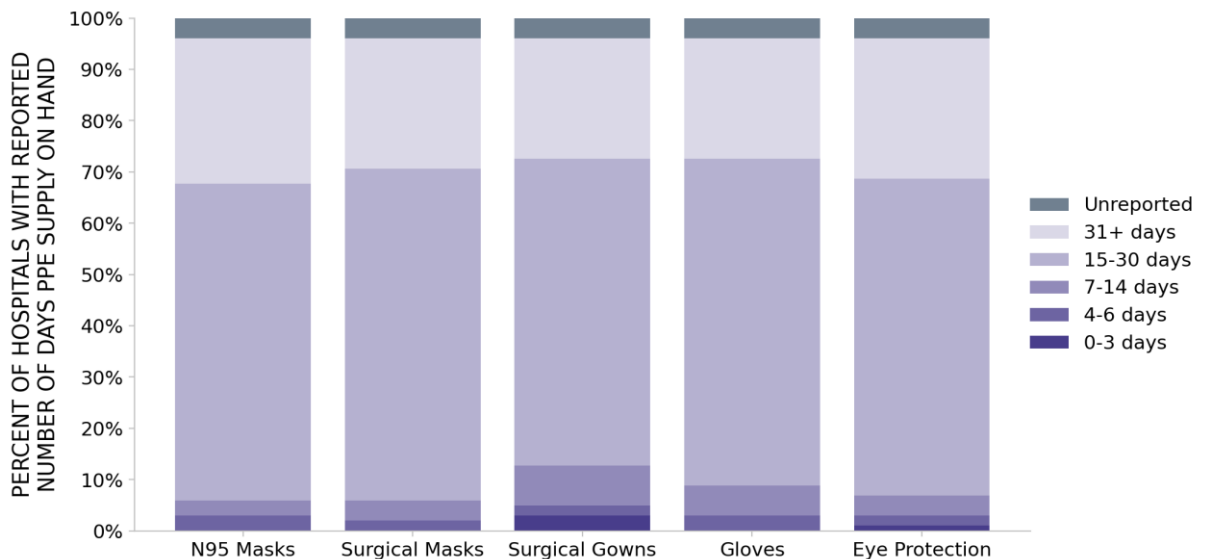
STATE PROFILE REPORT | 06.04.2021

102 hospitals are expected to report in Kentucky

## HOSPITAL ADMISSIONS



## HOSPITAL PPE SUPPLIES



### DATA SOURCES

**Hospitalizations:** Unified Hospitals Dataset in HHS Protect. These data exclude psychiatric, rehabilitation, and religious non-medical hospitals. Hospitals explicitly identified by states/regions as those from which we should not expect reports were excluded from the percent reporting figure. Data is through 6/2/2021.

**PPE:** Unified Hospitals Dataset in HHS Protect. These data exclude psychiatric, rehabilitation, and religious non-medical hospitals. Values presented show the latest reports from hospitals in the week ending 6/2/2021.

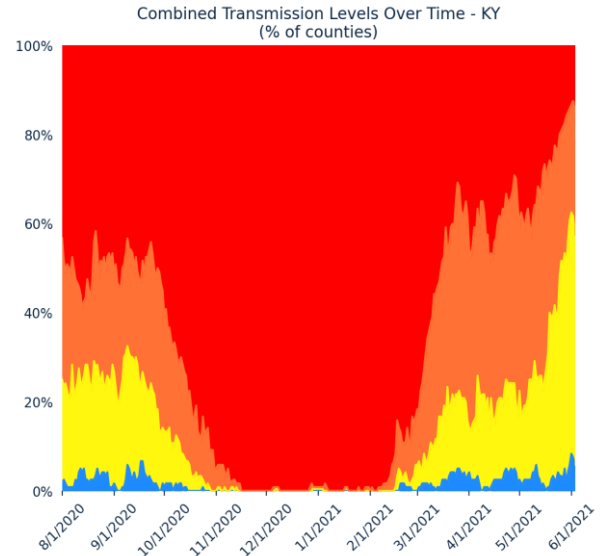
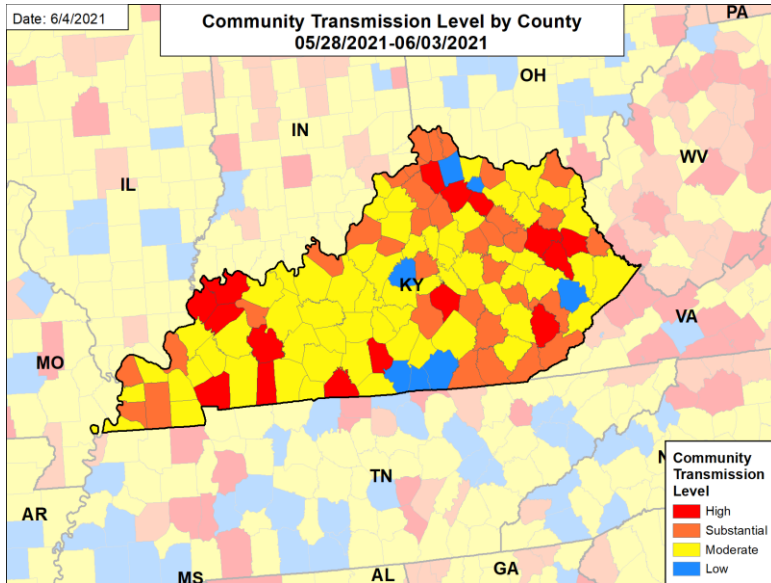
**METHODS:** Details available on last two pages of report.



# KENTUCKY

STATE PROFILE REPORT | 06.04.2021

## COMMUNITY TRANSMISSION BY COUNTY AND METRO AREA



### COUNTIES AND METRO AREAS BY COMBINED TRANSMISSION LEVEL

CATEGORY	LOW TRANSMISSION BLUE	MODERATE TRANSMISSION YELLOW	SUBSTANTIAL TRANSMISSION ORANGE	HIGH TRANSMISSION RED
# OF COUNTIES (CHANGE)	7 (↑4)	62 (↑4)	35 (↓2)	16 (↓6)
# OF METRO AREAS (CHANGE)	0 (0)	18 (↑5)	6 (↓5)	1 (0)

**All Blue Counties:** Pendleton, Washington, Robertson, Clinton, Wayne, Knott, Cumberland

**All Yellow Counties:** Fayette, Hardin, Warren, Madison, Daviess, McCracken, Pike, Bullitt, Christian, Boyd, Pulaski, Jessamine, Shelby, Hopkins, Marshall, Knox, Taylor, Grayson, Barren, Logan, Nelson, Floyd, Calloway, Marion, Oldham, Woodford, Boyle, Bourbon, Lawrence, Clay, Letcher, Adair, Breathitt, Russell, Rowan, Larue, Anderson, Carter, Breckinridge, Jackson, Green, Caldwell, Henry, Ohio, Wolfe, Hart, Powell, Simpson, Garrard, Crittenden, Butler, Bracken, Trimble, Lee, Edmonson, Fleming, Fulton, Monroe, Lyon, Lewis, Carlisle, Hancock

**All Yellow CBSAs:** Louisville/Jefferson County, Cincinnati, Lexington-Fayette, Elizabethtown-Fort Knox, Bowling Green, Richmond-Berea, Huntington-Ashland, Clarksville, Owensboro, Paducah, Frankfort, Evansville, Somerset, Campbellsville, Madisonville, Glasgow, Bardstown, Murray

**All Orange Counties:** Jefferson, Kenton, Boone, Laurel, Campbell, Scott, Graves, Franklin, Whitley, Perry, Harlan, Montgomery, Greenup, Clark, Bell, Mercer, Rockcastle, Casey, Bath, McCreary, Spencer, Estill, Meade, Mason, Owen, Martin, Carroll, McLean, Gallatin, Livingston, Menifee, Hickman, Owsley, Ballard, Elliott

**All Orange CBSAs:** London, Danville, Mount Sterling, Mayfield, Middlesborough, Maysville

**All Red Counties:** Johnson, Grant, Lincoln, Muhlenberg, Harrison, Henderson, Trigg, Union, Magoffin, Todd, Webster, Nicholas, Leslie, Morgan, Metcalfe, Allen

**All Red CBSAs:** Central City

### DATA SOURCES

Maps and figures reflect 7-day average of data from 5/28-6/3 (cases), 5/26-6/1 (tests). Metro areas and counties are listed in order of the total number of cases in the last week from largest to smallest.

**Note:** Most recent days may have incomplete reporting.

**Cases:** County-level data is from a CDC managed aggregate county dataset compiled from state and local health departments; therefore, the values may not match those reported directly by the state. Data is through 6/3/2021.

**Testing:** CELR (COVID-19 Electronic Lab Reporting) state health department-reported data. Data is through 6/1/2021.

**Combined Transmission Level:** If the two indicators suggest different transmission levels, the higher level is selected. Previous week transmission levels are computed based on current data. See [CDC COVID Data Tracker](#).

**METHODS:** Details available on last two pages of report.

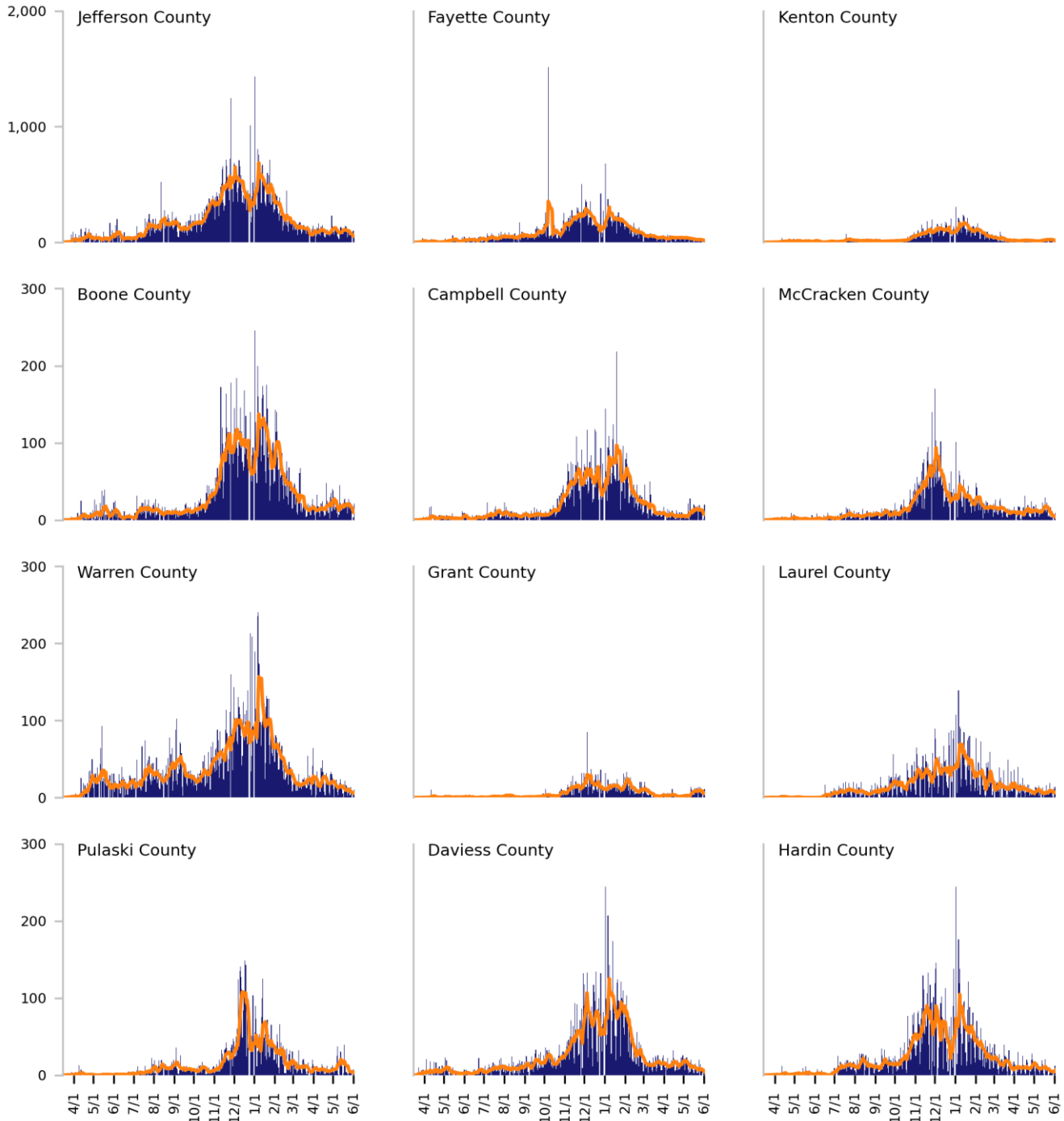


# Top 12 counties based on number of new cases in the last 3 weeks

The scale is fixed per row based on the historical peak number of daily cases\*

— Daily COVID-19 Cases (7-day average)    ■ Daily COVID-19 Cases

TOTAL DAILY CASES



\* The vertical scale of plots is fixed per row based on the historical peak number of daily cases; use caution when comparing visuals across different rows.

## DATA SOURCES

**Cases:** County-level data is from a CDC managed aggregate county dataset compiled from state and local health departments; therefore, the values may not match those reported directly by the state. Data is through 6/3/2021. Last 3 weeks is from 5/14 to 6/3. Counties are listed in order of the number of cases in the last three weeks, from largest to smallest.

**METHODS:** Details available on last two pages of report.

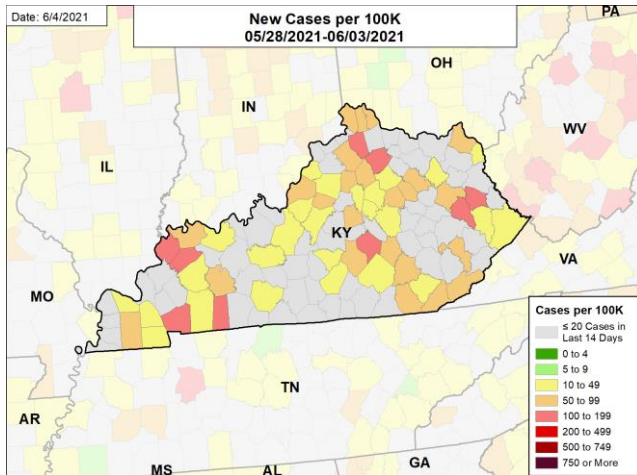
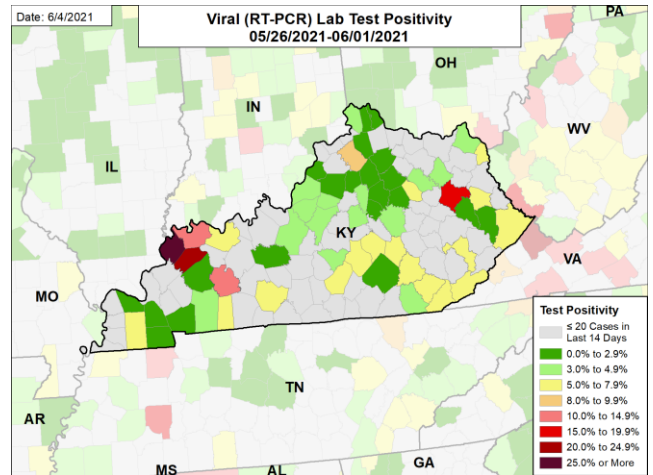
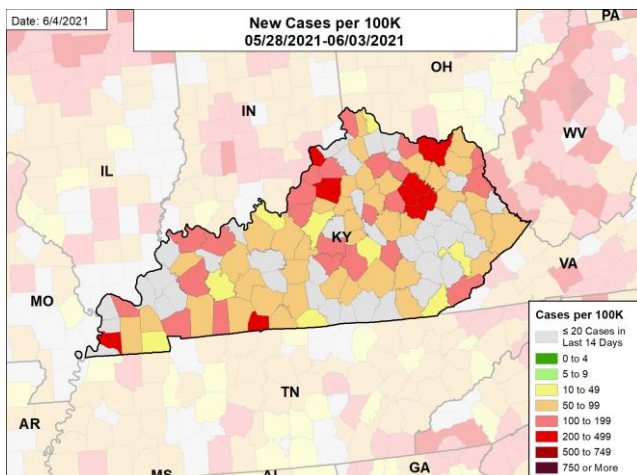
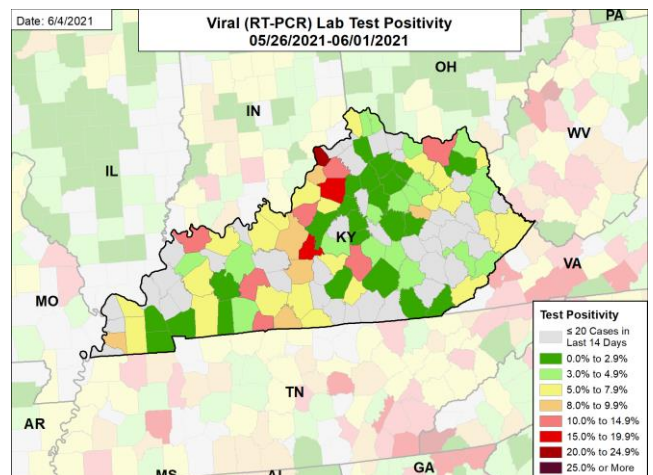




# KENTUCKY

STATE PROFILE REPORT | 06.04.2021

## CASE RATES AND VIRAL LAB TEST POSITIVITY

**NEW CASES PER 100,000****VIRAL (RT-PCR) LABORATORY TEST POSITIVITY****NEW CASES PER 100,000 ONE MONTH BEFORE****VIRAL (RT-PCR) LABORATORY TEST POSITIVITY ONE MONTH BEFORE**

### DATA SOURCES

**Note:** Some dates may have incomplete data due to delays in reporting. Data may be backfilled over time, resulting in week-to-week changes.

**Cases:** County-level data is from a CDC managed aggregate county dataset compiled from state and local health departments; therefore, the values may not match those reported directly by the state. Data is through 6/3/2021. The week one month before is from 4/30 to 5/6.

**Testing:** CELR (COVID-19 Electronic Lab Reporting) state health department-reported data through 6/1/2021. The week one month before is from 4/28 to 5/4.

**METHODS:** Details available on last two pages of report.



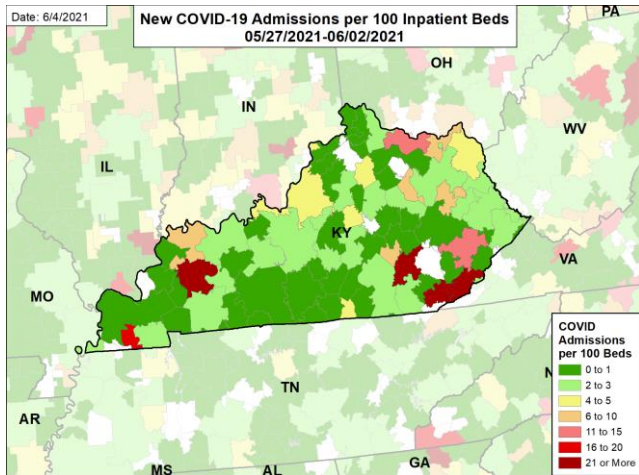


# KENTUCKY

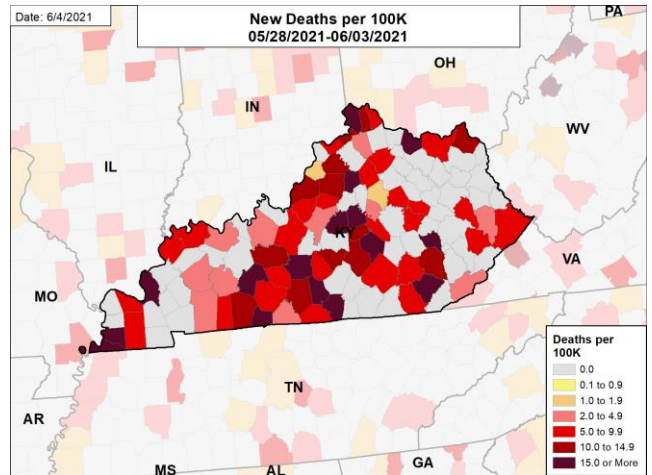
STATE PROFILE REPORT | 06.04.2021

## HOSPITAL ADMISSIONS AND DEATH RATES

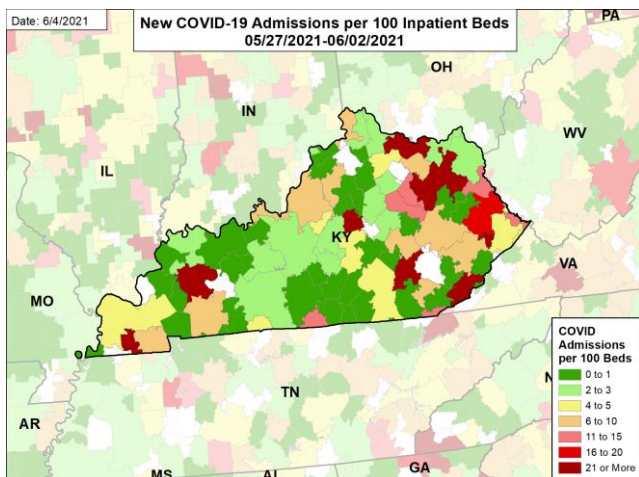
### CONFIRMED NEW COVID-19 ADMISSIONS PER 100 INPATIENT BEDS



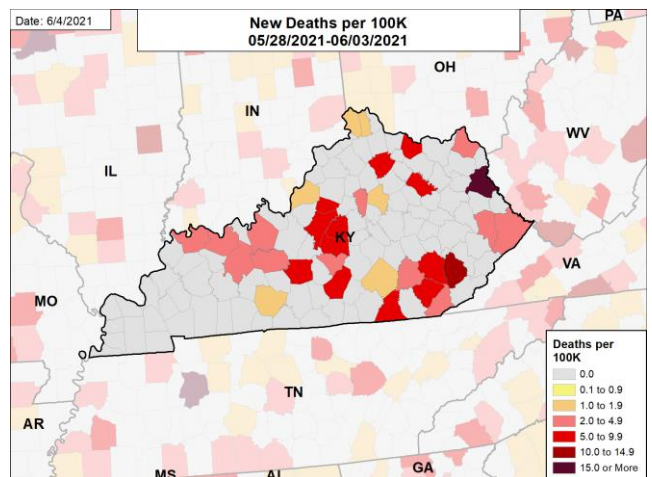
### NEW DEATHS PER 100,000



### CONFIRMED NEW COVID-19 ADMISSIONS PER 100 INPATIENT BEDS ONE MONTH BEFORE



### NEW DEATHS PER 100,000 ONE MONTH BEFORE



#### DATA SOURCES

**Note:** Some dates may have incomplete data due to delays in reporting. Data may be backfilled over time, resulting in week-to-week changes.

**Deaths:** County-level data is from a CDC managed aggregate county dataset compiled from state and local health departments; therefore, the values may not match those reported directly by the state. Data is through 6/3/2021. The week one month before is from 4/30 to 5/6.

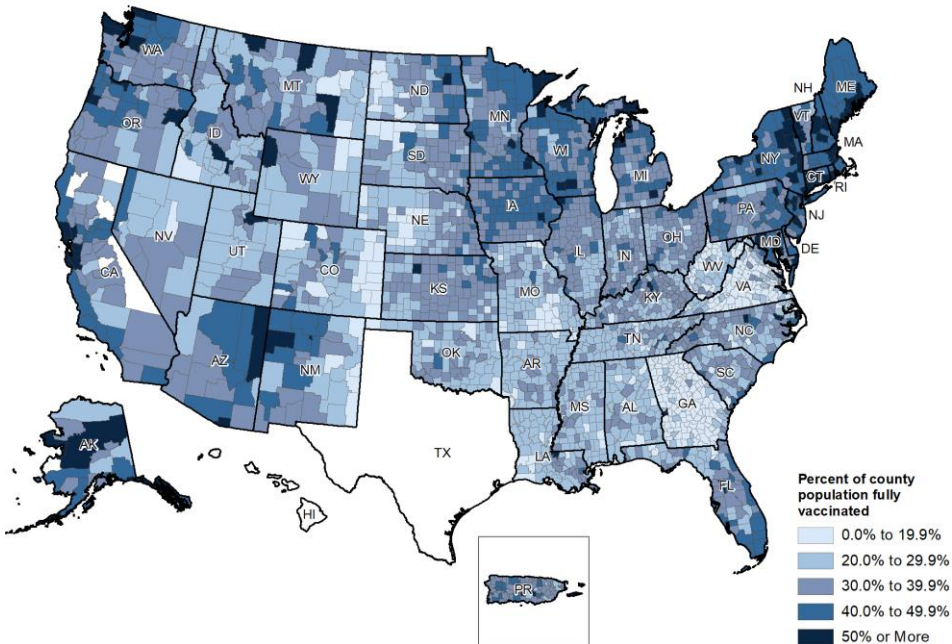
**Hospitalizations:** Unified Hospitals Dataset in HHS Protect. Totals include only confirmed COVID-19 admissions. Data is through 6/2/2021. The week one month before is from 4/29 to 5/5.

**METHODS:** Details available on last two pages of report.



# National Picture: Vaccinations

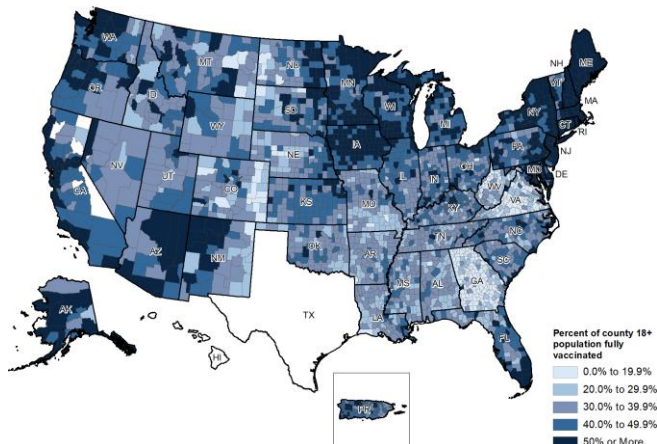
## PERCENT OF POPULATION FULLY VACCINATED



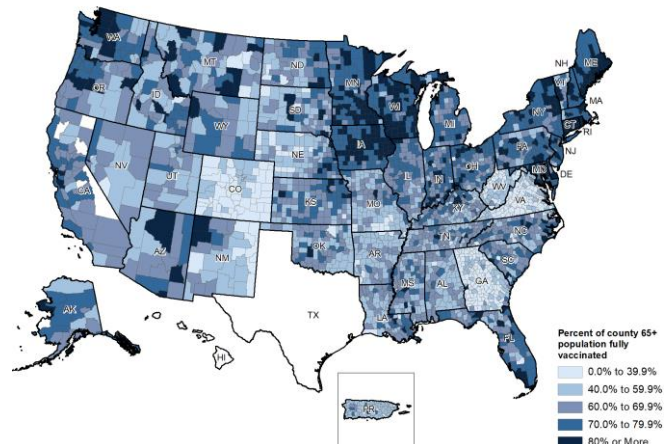
## NATIONAL RANKING OF POPULATION FULLY VACCINATED

National Rank	State	National Rank	State
1	VT	27	IL
2	ME	28	AK
3	MA	29	FL
4	CT	30	KY
5	RI	31	KS
6	NH	32	MT
7	NJ	33	PR
8	MD	34	NV
9	NM	35	ND
10	HI	36	NC
11	NY	37	AZ
12	WA	38	TX
13	DC	39	IN
14	MN	40	MO
15	OR	41	SC
16	CO	42	WV
17	VA	43	OK
18	WI	44	ID
19	PA	45	GA
20	IA	46	UT
21	DE	47	WY
22	CA	48	TN
23	NE	49	LA
24	SD	50	AR
25	MI	51	AL
26	OH	52	MS

## PERCENT OF 18+ POPULATION FULLY VACCINATED



## PERCENT OF 65+ POPULATION FULLY VACCINATED



### DATA SOURCES

**Vaccinations:** [CDC COVID Data Tracker](#). Data includes the Moderna, Pfizer BioNTech, and J&J/Janssen COVID-19 vaccines and reflects current data available as of 15:18 EDT on 06/04/2021. Data last updated 06:00 EDT on 06/04/2021. Persons who are fully vaccinated include those who have received both doses of the Moderna or Pfizer-BioNTech vaccine as well as those who have received one dose of the J&J/Janssen vaccine. Allocations are made pro rata (equal based on population) from which jurisdictions are then to order. The following states have ≤80% completeness reporting vaccinations by county, which may result in underestimates of vaccination data for counties: VT (74%), CO (73%), WV (54%), VA (51%), GA (51%), HI (0%), and TX (0%).

**METHODS:** Details available on last two pages of report.

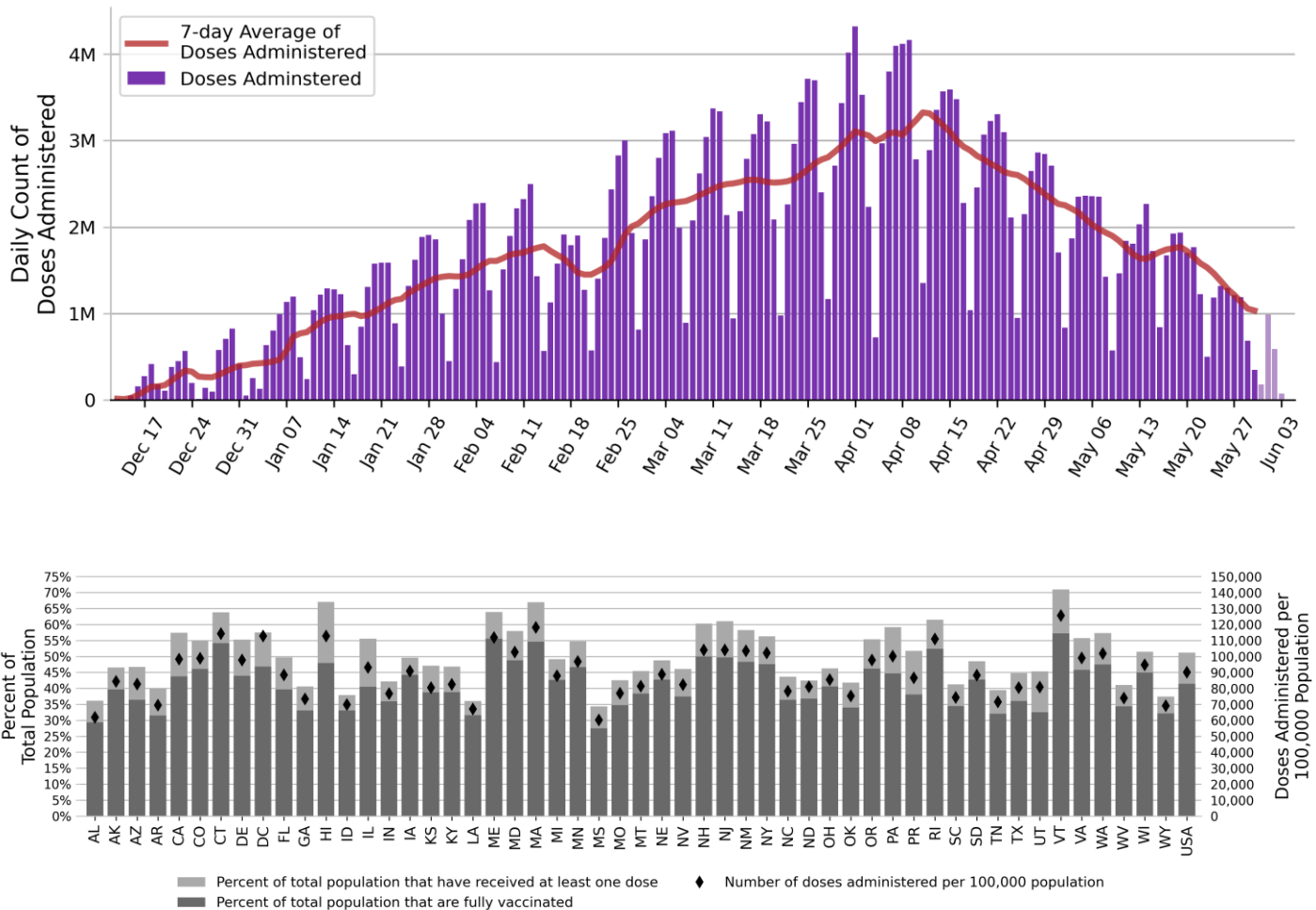


# National Picture: Vaccinations

NATIONAL COVID-19 VACCINE SUMMARY AS OF 6/4

<b>DOSES DELIVERED</b>	369,159,075 111,194 per 100k	<b>DOSES ADMINISTERED</b>	299,120,522 90,098 per 100k
<b>PEOPLE RECEIVED AT LEAST ONE DOSE</b>	169,735,441 51.1% of total pop.	<b>PEOPLE FULLY VACCINATED</b>	137,455,367 41.4% of total pop.
<b>PEOPLE 18+ RECEIVED AT LEAST ONE DOSE</b>	163,088,346 63.1% of 18+ pop.	<b>PEOPLE 18+ FULLY VACCINATED</b>	135,049,742 52.3% of 18+ pop.
<b>PEOPLE 65+ RECEIVED AT LEAST ONE DOSE</b>	47,121,353 85.9% of 65+ pop.	<b>PEOPLE 65+ FULLY VACCINATED</b>	41,145,633 75.0% of 65+ pop.

DAILY NATIONAL COUNT OF VACCINE DOSES ADMINISTERED BY DATE OF ADMINISTRATION



## DATA SOURCES

**Vaccinations:** [CDC COVID Data Tracker](#). Data includes the Moderna, Pfizer BioNTech, and J&J/Janssen COVID-19 vaccines and reflects current data available as of 15:18 EDT on 06/04/2021. Data last updated 06:00 EDT on 06/04/2021. Persons who are fully vaccinated include those who have received both doses of the Moderna or Pfizer-BioNTech vaccine as well as those who have received one dose of the J&J/Janssen vaccine. Allocations are made pro rata (equal based on population) from which jurisdictions are then to order. Due to delays in reporting, data on doses administered in recent days (as reflected by lighter blue coloring in the Daily National Count figure) may be an underestimate of the actual value.

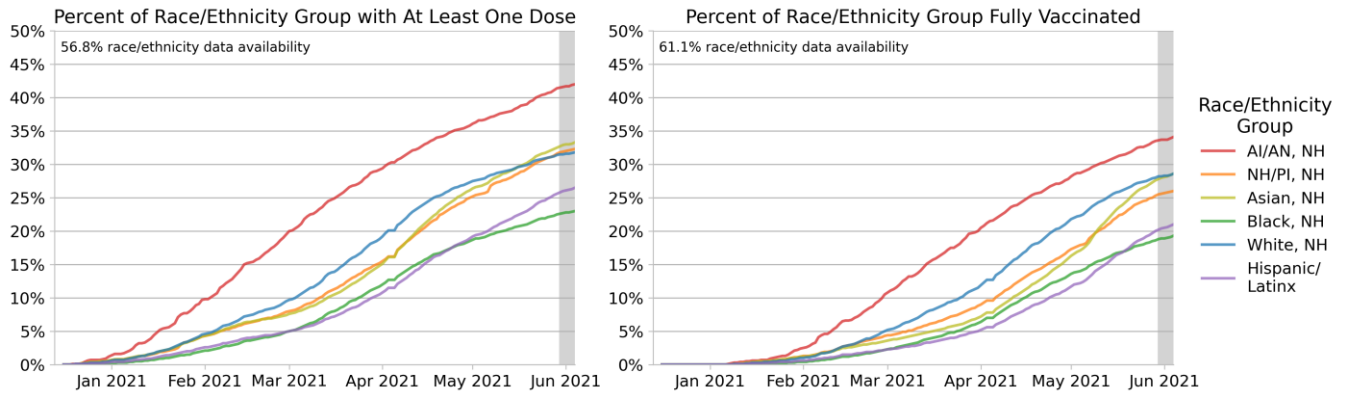
**METHODS:** Details available on last two pages of report.



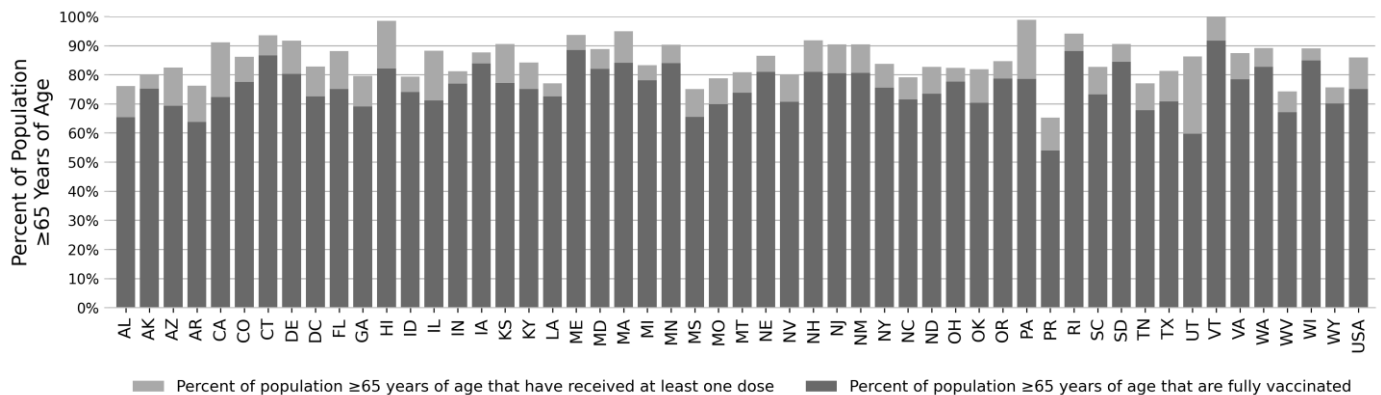
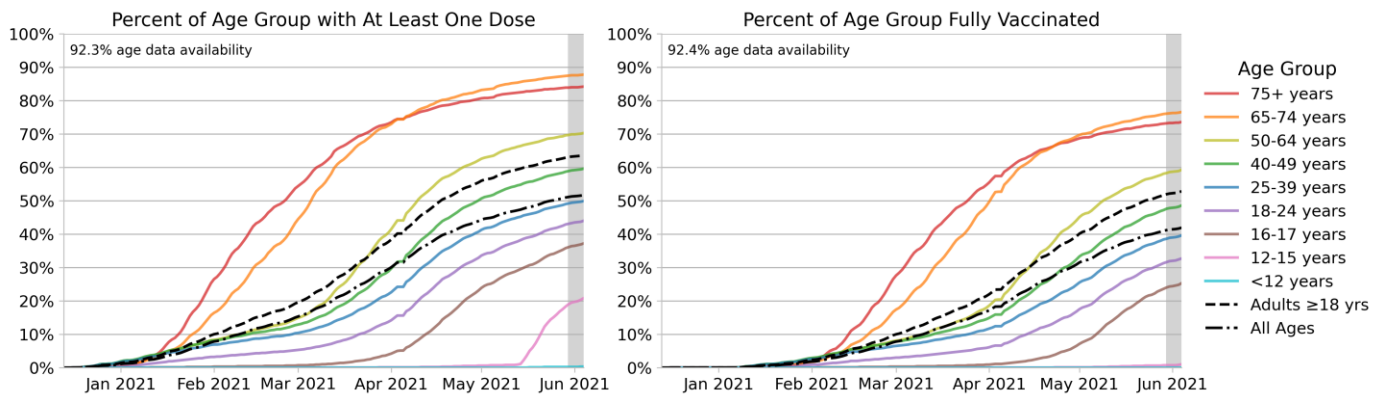


# National Picture: Vaccinations

## NATIONAL SUMMARY OF VACCINATIONS BY RACE/ETHNICITY



## NATIONAL SUMMARY OF VACCINATIONS BY AGE



### DATA SOURCES

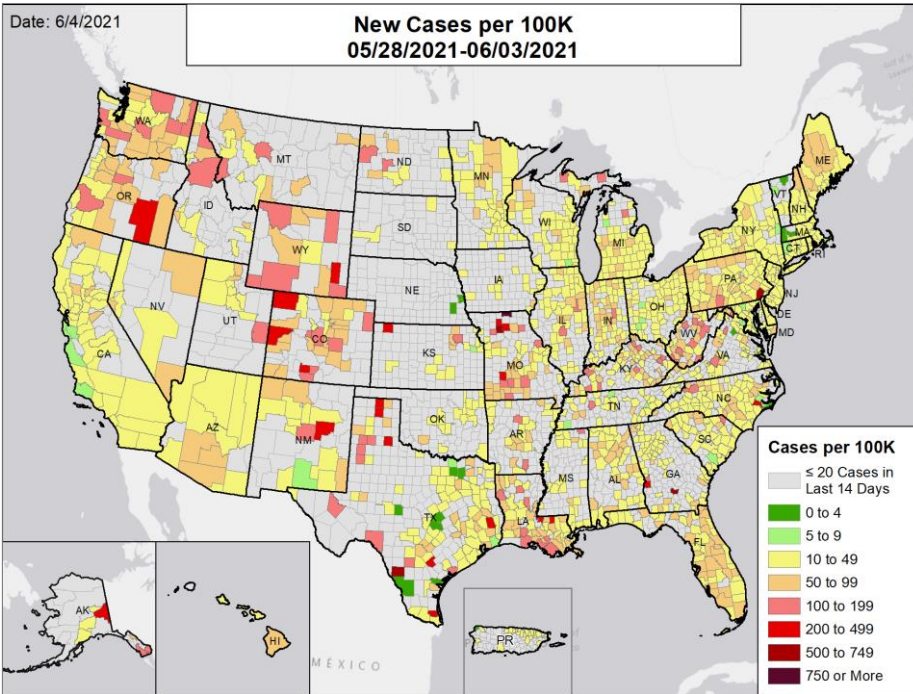
**Vaccinations:** CDC COVID Data Tracker. Data includes the Moderna, Pfizer BioNTech, and J&J/Janssen COVID-19 vaccines and reflects current data available as of 15:18 EDT on 06/04/2021. Data last updated 06:00 EDT on 06/04/2021. Persons who are fully vaccinated include those who have received both doses of the Moderna or Pfizer-BioNTech vaccine as well as those who have received one dose of the J&J/Janssen vaccine. Allocations are made pro rata (equal based on population) from which jurisdictions are then to order. Race/Ethnicity data were available for 56.8% receiving at least one dose and 61.1% fully vaccinated. Age data were available for 92.3% receiving at least one dose and 92.4% fully vaccinated. Texas does not report demographic-specific dose number information to CDC, so data for Texas are not represented in demographic trends figures. "NH" stands for Non-Hispanic/Latinx, "AI/AN" stands for American Indian or Alaska Native, and "NH/PI" stands for Native Hawaiian or Pacific Islander.

**METHODS:** Details available on last two pages of report.



# National Picture: Cases

## NEW CASES PER 100,000

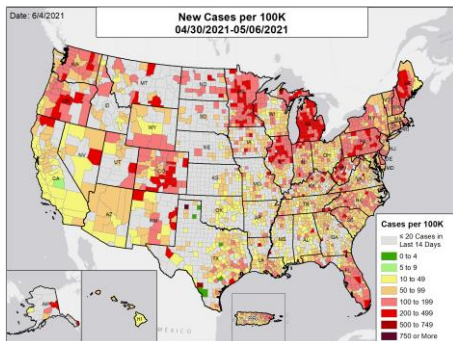


## NATIONAL RANKING OF NEW CASES PER 100,000

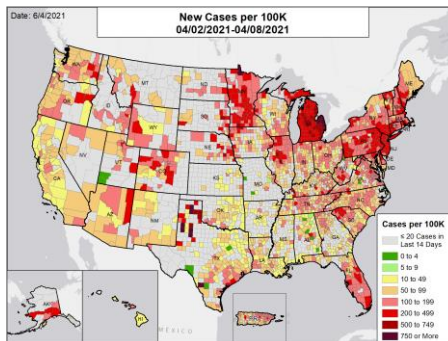
National Rank	State	National Rank	State
1	CA	27	DC
2	VT	28	NM
3	NE	29	DE
4	SD	30	AK
5	NJ	31	AR
6	PR	32	NC
7	MD	33	IL
8	NH	34	PA
9	VA	35	ND
10	CT	36	ME
11	MI	37	IN
12	MA	38	ID
13	OK	39	AL
14	IA	40	UT
15	TN	41	KY
16	WI	42	MO
17	RI	43	MT
18	NY	44	OR
19	SC	45	LA
20	HI	46	AZ
21	TX	47	NV
22	MN	48	FL
23	OH	49	WV
24	MS	50	WA
25	GA	51	CO
26	KS	52	WY

## NEW CASES PER 100,000 IN THE WEEK:

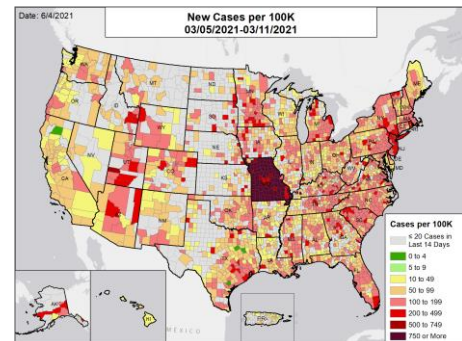
### ONE MONTH BEFORE



### TWO MONTHS BEFORE



### THREE MONTHS BEFORE



## DATA SOURCES

**Note:** Some dates may have incomplete data due to delays in reporting. Data may be backfilled over time, resulting in week-to-week changes.

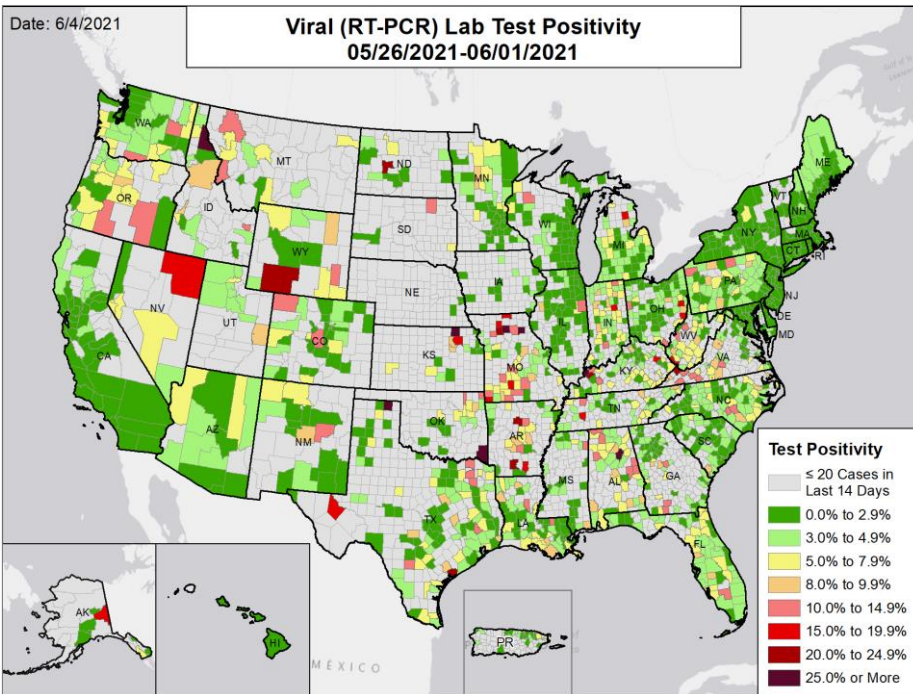
**Cases:** County-level data is from a CDC managed aggregate county dataset compiled from state and local health departments; therefore, the values may not match those reported directly by the state. State values are aggregated data provided by the states to the CDC. The week one month before is from 4/30 to 5/6; the week two months before is from 4/2 to 4/8; the week three months before is from 3/5 to 3/11. As of 5/26, Nebraska is reporting by Local Health Department instead of county; therefore, after 5/25 no county case and death data is available.

**METHODS:** Details available on last two pages of report.



# National Picture: RT-PCR Test Positivity

## VIRAL (RT-PCR) LAB TEST POSITIVITY

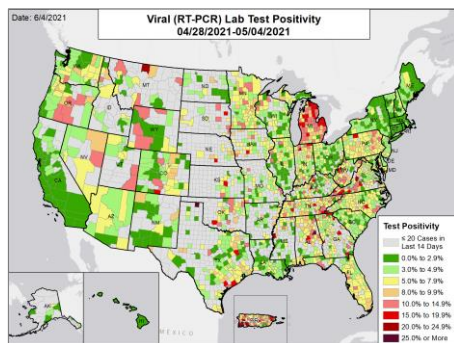


## NATIONAL RANKING OF TEST POSITIVITY

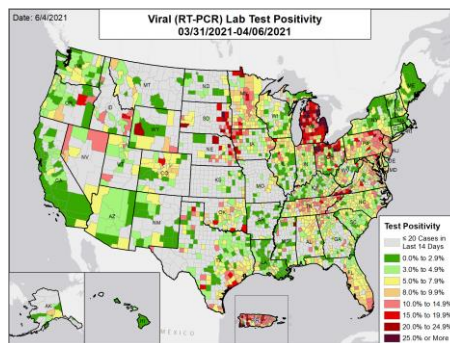
National Rank	State	National Rank	State
1	MA	27	VA
2	CA	28	NE
3	RI	29	MI
4	VT	30	PA
5	CT	31	OK
6	DC	32	KS
7	NY	33	NC
8	AK	34	KY
9	HJ	35	MS
10	NJ	36	LA
11	NH	37	WA
12	IL	38	TN
13	MD	39	UT
14	WI	40	NV
15	ME	41	AZ
16	NM	42	ID
17	DE	43	OR
18	ND	44	AR
19	SC	45	FL
20	MN	46	MO
21	IA	47	IN
22	PR	48	SD
23	GA	49	WV
24	CO	50	WY
25	OH	51	AL
26	TX	52	MT

## VIRAL (RT-PCR) LAB TEST POSITIVITY IN THE WEEK:

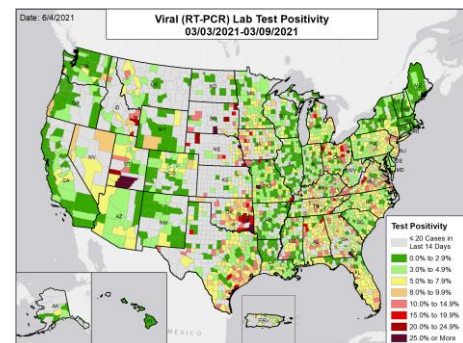
### ONE MONTH BEFORE



### TWO MONTHS BEFORE



### THREE MONTHS BEFORE



## DATA SOURCES

**Note:** Some dates may have incomplete data due to delays in reporting. Data may be backfilled over time, resulting in week-to-week changes.

**Testing:** Combination of CELR (COVID-19 Electronic Lab Reporting) state health department-reported data and HHS Protect laboratory data (provided directly to Federal Government from public health labs, hospital labs, and commercial labs) through 6/1/2021. The week one month before is from 4/28 to 5/4; the week two months before is from 3/31 to 4/6; the week three months before is from 3/3 to 3/9.

**METHODS:** Details available on last two pages of report.

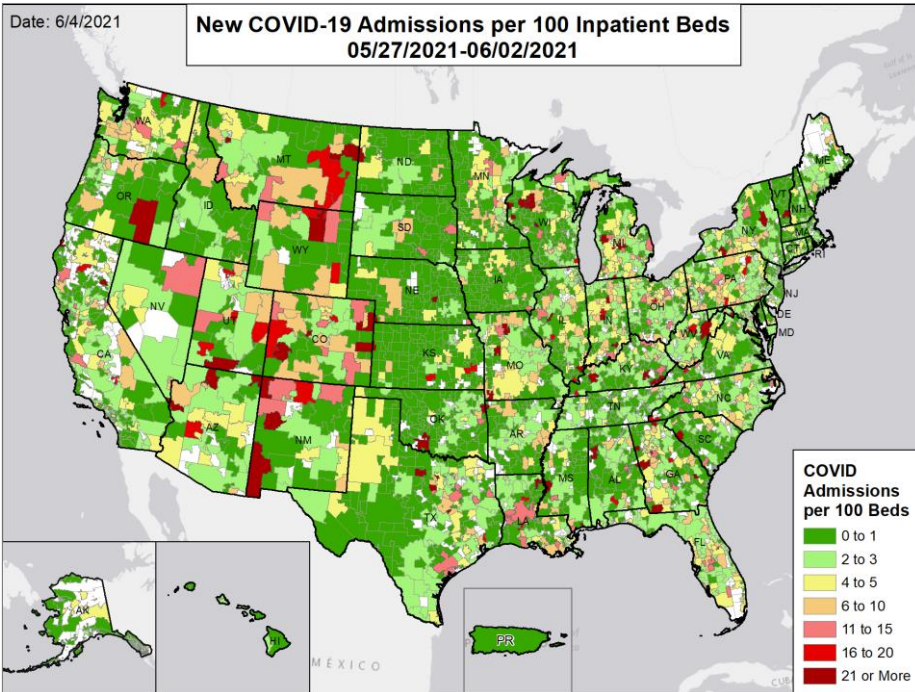




# National Picture: Hospital Admissions

CONFIRMED NEW COVID-19 ADMISSIONS PER 100 INPATIENT BEDS

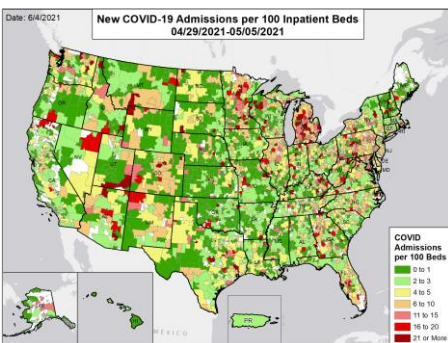
NATIONAL RANKING OF CONFIRMED ADMISSIONS PER 100 BEDS



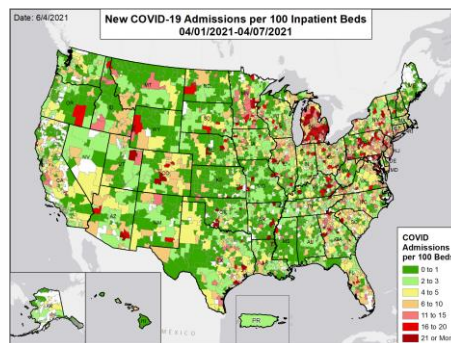
National Rank	State	National Rank	State
1	PR	27	AR
2	VT	28	IL
3	NE	29	ME
4	MA	30	NV
5	SD	31	OH
6	RI	32	WI
7	ND	33	MS
8	AK	34	TX
9	IA	35	OR
10	NH	36	MO
11	KS	37	IN
12	HI	38	PA
13	CT	39	WA
14	DC	40	AZ
15	TN	41	WV
16	SC	42	NM
17	NY	43	MD
18	NJ	44	LA
19	DE	45	UT
20	CA	46	MI
21	OK	47	FL
22	VA	48	GA
23	AL	49	MT
24	MN	50	CO
25	NC	51	WY
26	ID	52	KY

CONFIRMED NEW COVID-19 ADMISSIONS PER 100 INPATIENT BEDS IN THE WEEK:

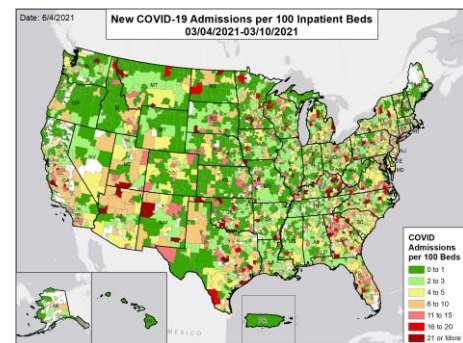
ONE MONTH BEFORE



TWO MONTHS BEFORE



THREE MONTHS BEFORE



## DATA SOURCES

**Note:** Some dates may have incomplete data due to delays in reporting. Data may be backfilled over time, resulting in week-to-week changes.

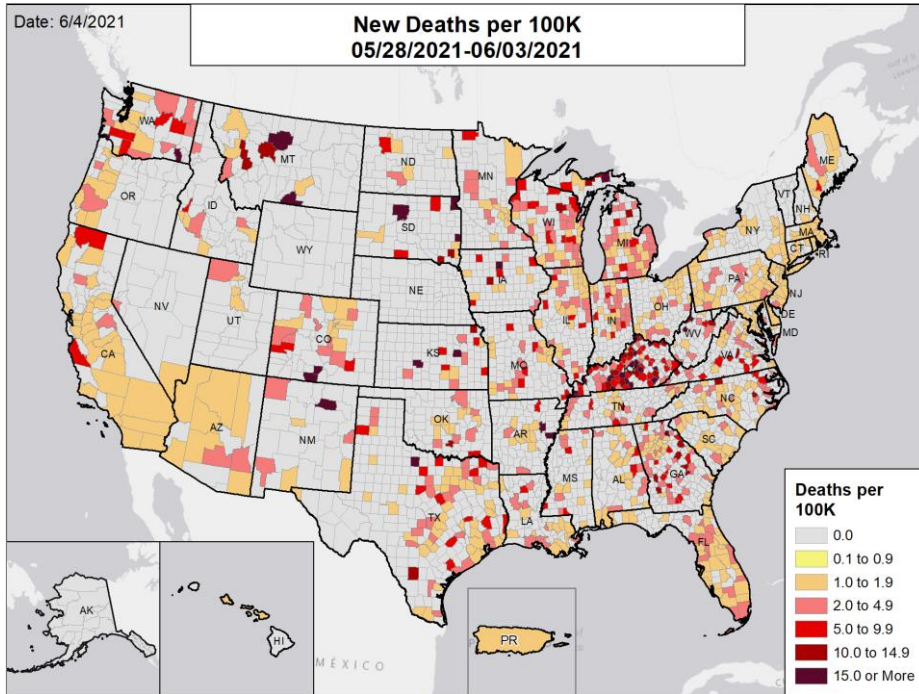
**Admissions:** Unified Hospitals Dataset in HHS Protect through 6/2/2021. Totals include only confirmed COVID-19 admissions. Puerto Rico is shown at the territory level as HSAs are not defined. The week one month before is from 4/29 to 5/5; the week two months before is from 4/1 to 4/7; the week three months before is from 3/4 to 3/10.

**METHODS:** Details available on last two pages of report.



# National Picture: Deaths

## NEW DEATHS PER 100,000

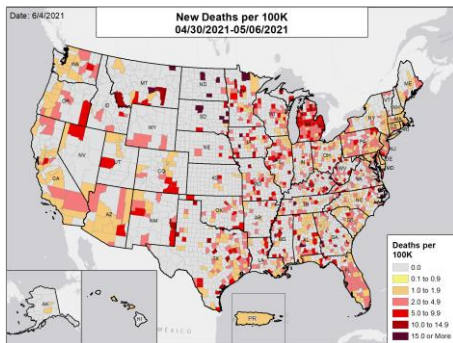


## NATIONAL RANKING OF NEW DEATHS PER 100,000

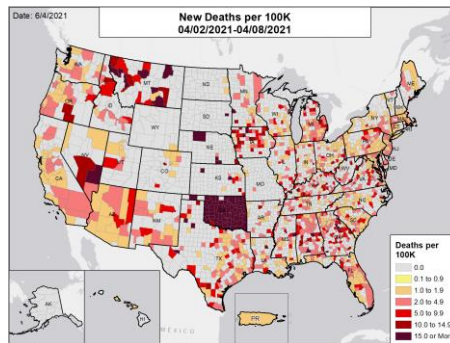
National Rank	State	National Rank	State
1	AK	27	OK
2	NE	28	NM
3	VT	29	NV
4	CA	30	NY
5	SC	31	NC
6	WY	32	LA
7	TX	33	IN
8	HI	34	VA
9	MS	35	AZ
10	NH	36	DE
11	ND	37	NJ
12	CT	38	WV
13	TN	39	WA
14	AR	40	MO
15	UT	41	ME
16	KS	42	CO
17	RI	43	PA
18	MI	44	KY
19	OR	45	AL
20	DC	46	FL
21	IA	47	GA
22	MN	48	IL
23	ID	49	OH
24	MA	50	MT
25	PR	51	SD
26	MD	52	WI

## NEW DEATHS PER 100,000 IN THE WEEK:

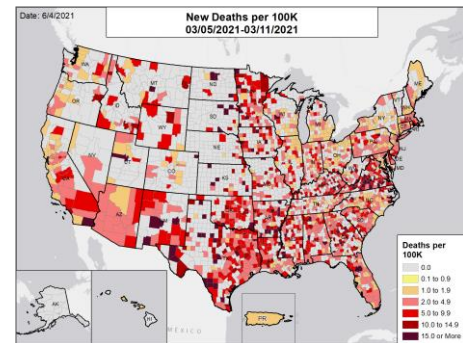
### ONE MONTH BEFORE



### TWO MONTHS BEFORE



### THREE MONTHS BEFORE



## DATA SOURCES

**Note:** Some states may have incomplete data due to delays in reporting. Data may be backfilled over time, resulting in week-to-week changes.

**Deaths:** County-level data is from a CDC managed aggregate county dataset compiled from state and local health departments; therefore, the values may not match those reported directly by the state. State values are aggregated data provided by the states to the CDC. Puerto Rico is shown at the territory level as deaths are not reported at the municipio level. As of 3/2/2021, Ohio changed their method of reporting COVID-19 deaths and will report deaths on the day of death, not the day of report, which could result in a fluctuation in the number of deaths from recent weeks due to delayed reporting. The week one month before is from 4/30 to 5/6; the week two months before is from 4/2 to 4/8; the week three months before is from 3/5 to 3/11. As of 5/26, Nebraska is reporting by Local Health Department instead of county; therefore, after 5/25 no county case and death data is available.

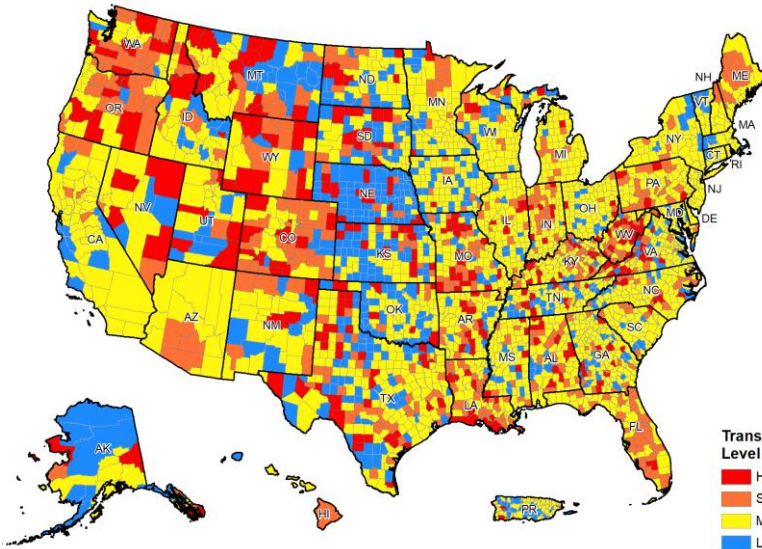
**METHODS:** Details available on last two pages of report.





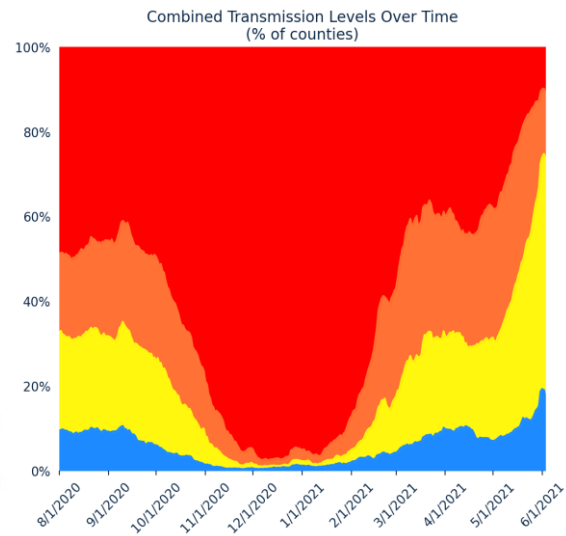
# National Picture: Community Transmission

## COMMUNITY TRANSMISSION BY COUNTY



Transmission Level

- High
- Substantial
- Moderate
- Low



## COUNTIES BY COMMUNITY TRANSMISSION INDICATOR

CASES PER 100K	0 TO 9	10 TO 49	50 TO 99	100 +
# OF COUNTIES (CHANGE)	669 (↑197)	1904 (↑274)	493 (↓319)	154 (↓152)
% OF COUNTIES (CHANGE)	20.8% (↑6.1%)	59.1% (↑8.5%)	15.3% (↓9.9%)	4.8% (↓4.7%)
TEST POSITIVITY	0.0% TO 4.9%	5.0% TO 7.9%	8.0% TO 9.9%	10.0% +
# OF COUNTIES (CHANGE)	2459 (↑125)	414 (↓124)	123 (↓13)	224 (↑12)
% OF COUNTIES (CHANGE)	76.4% (↑3.9%)	12.9% (↓3.9%)	3.8% (↓0.4%)	7.0% (↑0.4%)

## COUNTIES BY COMBINED TRANSMISSION LEVEL

CATEGORY	LOW TRANSMISSION BLUE	MODERATE TRANSMISSION YELLOW	SUBSTANTIAL TRANSMISSION ORANGE	HIGH TRANSMISSION RED
# OF COUNTIES (CHANGE)	594 (↑170)	1802 (↑259)	495 (↓309)	329 (↓120)
% OF COUNTIES (CHANGE)	18.4% (↑5.3%)	56.0% (↑8.0%)	15.4% (↓9.6%)	10.2% (↓3.7%)

### DATA SOURCES

Maps and figures reflect 7-day average of data from 5/28-6/3 (cases), 5/26-6/1 (tests).

**Note:** Most recent days may have incomplete reporting.

**Cases:** County-level data is from a CDC managed aggregate county dataset compiled from state and local health departments; therefore, the values may not match those reported directly by the state Data is through 6/3/2021. As of 5/26, Nebraska is reporting by Local Health Department instead of county; therefore, after 5/25 no county case and death data is available.

**Testing:** Combination of CELR (COVID-19 Electronic Lab Reporting) state health department-reported data and HHS Protect laboratory data (provided directly to Federal Government from public health labs, hospital labs, and commercial labs). Data is through 6/1/2021.

**County Percentages:** Based on a denominator of 3,220 county/county-equivalents, including states, the District of Columbia, and Puerto Rico municipalities.

**Combined Transmission Level:** If the two indicators suggest different transmission levels, the higher level is selected. Previous week transmission levels are computed based on current data. See [CDC COVID Data Tracker](#).

**METHODS:** Details available on last two pages of report.



# DATA SOURCES & METHODS

STATE PROFILE REPORT | 06.04.2021

- Some dates may have incomplete data due to delays and/or differences in state reporting. Data may be backfilled over time, resulting in week-to-week changes. It is critical that states provide as up-to-date data as possible. Figures and values may also differ from state reports due to differing methodologies.
- All population values are vintage 2019 US Census data.
- **Cases and Deaths:** County-level data is from a CDC-managed aggregate county dataset compiled from state and local health departments; therefore, the values may not match those reported directly by the state. State values are aggregated data provided by the states to the CDC. Data is as of 12:43 EDT on 06/04/2021.
  - Historical reports of cases and deaths — for which backfill dates are not available — that exceed 1% of the total new cases or deaths reported in the US that day have been excluded from state daily and weekly trends. However, these are still present in county-level data. Historical reports in the last two weeks (5/21/21 – 6/3/21) are:
    - Indiana cases: 765 on 6/3
    - Kentucky deaths: 2 on 5/22; 1 on 5/24; 1 on 5/25; 3 on 5/26; 2 on 5/27; 4 on 5/28; 18 on 5/29; and 260 on 6/1
    - Michigan deaths: 62 on 6/3
    - Mississippi deaths: 2 on 5/23; 10 on 5/24; 4 on 5/27; 3 on 5/30; 2 on 5/31; 1 on 6/2; and 1 on 6/3
    - New Mexico deaths: 113 on 5/24
    - Texas cases: 329 on 6/3
- **Testing:** The data presented represent viral COVID-19 laboratory diagnostic and screening test (reverse transcription polymerase chain reaction, RT-PCR) results—not individual people—and exclude antibody and antigen tests, unless stated otherwise. CELR (COVID-19 Electronic Lab Reporting) state health department-reported data are used to describe county-level viral COVID-19 RT-PCR result totals when information is available on patients' county of residence or healthcare providers' practice location. HHS Protect laboratory data (provided directly to Federal Government from public health labs, hospital labs, and commercial labs) are used otherwise. Because the data are deidentified, total RT-PCR tests are the number of tests performed, not the number of individuals tested. RT-PCR test positivity rate is the number of positive tests divided by the number of tests performed and resulted. For test positivity, last week data are from 5/26 to 6/1; previous week data are from 5/19 to 5/25; the week one month before data are from 4/28 to 5/4. For number of tests, last week data are from 5/22 to 5/28; previous week data are from 5/15 to 5/21. HHS Protect data is recent as of 09:52 EDT on 06/04/2021. Testing data are inclusive of everything received and processed by the CELR system as of 19:00 EDT on 06/03/2021.
- **Hospitalizations:** Unified Hospitals Dataset in HHS Protect. These data exclude psychiatric, rehabilitation, and religious non-medical hospitals. In addition, hospitals explicitly identified by states/regions as those from which we should not expect reports were excluded from the percent reporting figure. The data presented represents raw data provided; we are working diligently with state liaisons to improve reporting consistency. Data is recent as of 10:08 EDT on 06/04/2021.
- **Hospital PPE:** Unified Hospitals Dataset in HHS Protect. This figure may differ from state data due to differences in hospital lists and reporting between federal and state systems. These data exclude psychiatric, rehabilitation, and religious non-medical hospitals. Hospitals explicitly identified by states/regions as those from which we should not expect reports were excluded from the percent reporting figure. Data is recent as of 10:02 EDT on 06/04/2021.
- **Skilled Nursing Facilities:** National Healthcare Safety Network (NHSN). Data report resident and staff cases independently. Quality checks are performed on data submitted to the NHSN. Data that fail these quality checks or appear inconsistent with surveillance protocols may be excluded from analyses. Data presented in this report are more recent than data publicly posted by CMS. Last week is 5/24-5/30, previous week is 5/17-5/23.
- **State, County, and Metro Area Community Transmission Levels**
  - **High Transmission:** Those states, CBSAs, and counties that during the last week reported 100 or more cases per 100,000 population or a lab test positivity at or above 10.0%.
  - **Substantial Transmission:** Those states, CBSAs, and counties that during the last week reported from 50 to 99 cases per 100,000 population or a lab test positivity from 8.0% to 9.9%.
  - **Moderate Transmission:** Those states, CBSAs, and counties that during the last week reported from 10 to 49 cases per 100,000 population or a lab test positivity from 5.0% to 7.9%.
  - **Low Transmission:** Those states, CBSAs, and counties that during the last week reported from 0 to 9 cases per 100,000 population or a lab test positivity from 0.0% to 4.9%.
  - If the two indicators suggest different transmission levels, the higher level is selected. Previous week transmission levels are computed based on current data. See [CDC COVID Data Tracker](#).
- **Shortages:** Unified Hospitals Dataset in HHS Protect. These data exclude psychiatric, rehabilitation, and religious non-medical hospitals. Includes hospitals currently reporting a staffing shortage. Low supply is defined as a hospital reporting they are not able to maintain a 3-day supply of N95s, face masks, gloves, gowns, or eye protection. Data is recent as of 10:02 EDT on 06/04/2021.
- **Vaccinations:** [CDC COVID Data Tracker](#). Data includes the Moderna, Pfizer BioNTech, and J&J/Janssen COVID-19 vaccines and reflects current data available as of 15:18 EDT on 06/04/2021. Data last updated 06:00 EDT on 06/04/2021. Persons who are fully vaccinated include those who have received both doses of the Moderna or Pfizer-BioNTech vaccine as well as those who have received one dose of the J&J/Janssen vaccine. Allocations are made pro rata (equal based on population) from which jurisdictions are then to order. COVID-19 vaccines available in the U.S. are authorized only for persons ≥12 years of age (Pfizer-BioNTech) or ≥18 years of age (Moderna and J&J/Janssen). The following states have ≤80% completeness reporting vaccinations by county, which may result in underestimates of vaccination data for counties: VT (74%), CO (73%), WV (54%), VA (51%), GA (51%), HI (0%), and TX (0%).
- **Variants:** Data from [CDC COVID Data Tracker](#). Variant proportions are based on representative CDC sequence data (NS3 + CDC-funded contract sequencing) collected over a 4-week period ending May 8, 2021 for states with at least 300 sequences. Proportions are calculated using empirical (unweighted) data, which are subject to change over time and will be updated as more data become available. Proportions of variants do not represent the total number that may be circulating in the United States and may not match cases reported by states, territories, tribes, and local officials. For states and jurisdictions not listed, CDC has insufficient genomic surveillance data for the specified time period. Data updated by 19:00 ET on 6/1. Data pulled 12:56 EDT on 06/03/2021.



# DATA SOURCES & METHODS

STATE PROFILE REPORT | 06.04.2021

Color threshold values are rounded before color classification

Metric	Dark Green	Light Green	Yellow	Orange	Light Red	Red	Dark Red	Darkest Red
New cases per 100,000 population per week	≤4	5 – 9	10 – 49	50 – 99	100 – 199	200 – 499	500 – 749	≥750
Percent change in new cases per 100,000 population	≤-26%	-25% – -11%	-10% – 0%	1% – 10%	11% – 99%	100% – 999%	≥1000%	
Diagnostic test result positivity rate	≤2.9%	3.0% – 4.9%	5.0% – 7.9%	8.0% – 9.9%	10.0% – 14.9%	15.0% – 19.9%	20.0% – 24.9%	≥25.0%
Change in test positivity	≤-2.1%	-2.0% – -0.6%	-0.5% – 0.0%	0.1% – 0.5%	0.6% – 2.0%		≥2.1%	
Total diagnostic tests resulted per 100,000 population per week	≥5000	3000 – 4999	2000 – 2999	1000 – 1999	500 – 999		≤499	
Percent change in tests per 100,000 population	≥26%	11% – 25%	1% – 10%	-10% – 0%	-25% – -11%		≤-26%	
COVID-19 deaths per 100,000 population per week	0.0		0.1 – 0.9	1.0 – 1.9	2.0 – 4.9	5.0 – 9.9	10.0 – 14.9	≥15.0
Percent change in deaths per 100,000 population	≤-26%	-25% – -11%	-10% – 0%	1% – 10%	11% – 25%		≥26%	
Skilled Nursing Facilities with at least one resident COVID-19 case, death	0%			1% – 5%		≥6%		
Change in SNFs with at least one resident COVID-19 case, death	≤-2%		-1% – 1%		≥2%			
Confirmed and suspected new COVID-19 hospital admissions per 100 beds	≤2	3 – 5	6 – 10	11 – 15	16 – 20	21 – 25	≥26	
Confirmed new COVID-19 hospital admissions per 100 beds	≤1	2 – 3	4 – 5	6 – 10	11 – 15	16 – 20	≥21	
Change in new COVID-19 hospital admissions per 100 beds	≤-26%	-25% – -11%	-10% – 0%	1% – 10%	11% – 25%		≥26%	
Percent of hospitals with supply/staff shortages	≤9%		10% – 19%	20% – 29%	30% – 39%		≥40%	
Change in percent of hospitals with supply/staff shortages	≤-10%	-9% – -5%	-4% – 0%	1% – 4%	5% – 9%		≥10%	
Percent of Population Fully Vaccinated (State Level)	0.0 – 35.0%		35.1 – 40.0%		40.1 – 45.0%		45.1 – 50.0%	
							≥50.1%	