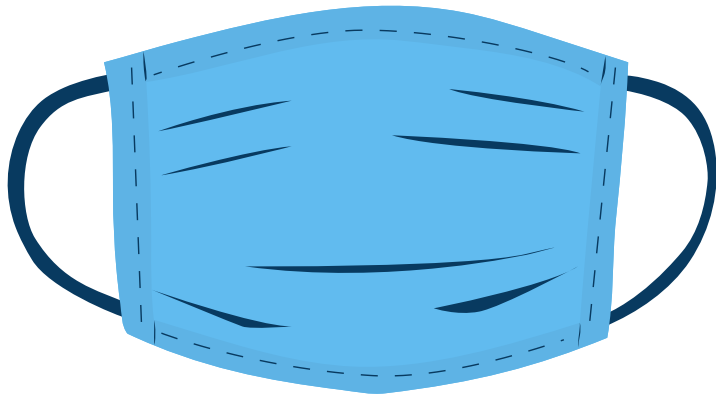


# We are committed to protecting our employees and visitors.



## Face coverings are requested if:

- You are not fully vaccinated\* or
- You are immune-compromised

Thank you for your cooperation.

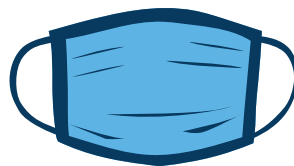
---

## #TeamKentucky Needs **YOU.**



### HANDS

Clean hands frequently.



### FACE

Wear a **mask** if not fully vaccinated.



### STAY HOME

Stay Home if **sick.**

\*Fully vaccinated is 14 or more days after finishing a complete vaccine series.

TEAM  
**KENTUCKY**



**Kentucky Public Health**  
Prevent. Promote. Protect.