

COVID-19 VACCINE FAST FACTS

Hearing a lot about the COVID-19 Vaccine?
Check out these **Fast Facts** for key information on
Kentucky's **Vaccine Distribution Plan**.

Is the COVID-19 vaccine safe?

Yes. COVID-19 vaccines are held to the same standards as other vaccines to make sure they are **safe**.

How much does the vaccine cost?

There is **no out-of-pocket cost** to consumers for the vaccine.

Do I need to wear a mask after receiving the vaccine?

Yes. The vaccine is highly effective in preventing serious COVID-19 disease, but you may **still spread** the disease to others.

Kentucky is following a **phased distribution system** of eligible groups. The Commonwealth is committed to making the vaccine available to all willing Kentuckians as **quickly and efficiently as vaccine supply allows**.

Phase 1a

Long-term care and assisted living facilities, health care personnel

Phase 1b

≥70, first responders, in-state K-12 personnel

Phase 1c

≥60, persons with high-risk conditions, essential workers

Phase 2

≥40

Phase 3

≥16

Winter 2021

OUR COVID-19 TOOLKIT:

While vaccines are highly effective at preventing severe disease, **we must all continue...**



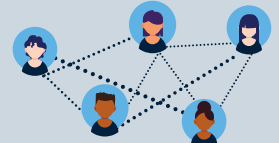
STAYING HOME IF SICK



MASKING



PERSONAL HYGIENE



SOCIAL DISTANCING

kycovid19.ky.gov



TEAM
KENTUCKY

vaccine.ky.gov