



2012-2013 Annual Report

"Changing the public's health one person at a time"





Vision Statement

To become a nationally accredited health department through the Public Health Accreditation Board by 2014.

Purpose

Changing the public's health one person at a time.

BOARD OF HEALTH

Our Mission Statement

*The Christian County
Health Department
provides and promotes
affordable medical
services, community
health education and
environmentally safe
surroundings to improve
the quality of life of
present and future citizens
of Christian County.*



Wade Northington, DVM, MPA
Veterinarian / Board Chair



Robert Bastin, OD
Optometrist



Mike Cayce, RPh
Pharmacist



Michael Clark, MD
Physician



Linda Crump, APRN
Nurse Representative



Joseph Dempsey, MD
Physician



Ken Dougherty, MD
Physician



Marty Gamble, DDS
Dentist



Tom Jones
Fiscal Court Representative



Everyone is an essential piece of the puzzle!



Bob Pickerill
Engineer



Steve Tribble
County Judge Executive



Charles Turner
Customer Representative



Keith Toms, MD
Medical Director

ADMINISTRATION

The Christian County Health Department remains committed to the vision of becoming a nationally accredited health department through the Public Health Accreditation Board by 2014. The health department has made great strides in the accreditation process and formally applied for accreditation in January 2013. We are anticipating a site review in the fall of 2014. Of the more than 3,000 state, local and tribal health departments in the United States, only 19 have achieved national accreditation. The accreditation process has truly changed our culture and how we do business.

The 2012/2013 fiscal year saw the Christian Health Department take a more strategic approach to the delivery of core public health services. The first step in the strategic planning process was the completion of the Christian County Community Health Assessment and Improvement Plan. The community health assessment evaluated the local public health system, community health status, future changes that may have an impact on public health, and community strengths. Based on the key issues identified, a community health improvement plan was developed.

The second step was to conduct an administrative assessment of the strengths, weaknesses, opportunities, and threats for the Christian County Health Department. The main emphasis of this assessment was the 10 Essential Public Health Services and Core Public Health Services. Through this process, items were identified to be used in the development of administrative priorities to move the health department forward.



Mark Pyle
Public Health
Director

The final step in the planning process was seeking board of health guidance and input into the direction the health department would head. From this planning process a comprehensive strategic plan was developed for fiscal year 2013/2014.

Many difficult decisions were made to align health department resources with core public health services. A three year community partnership with St. Luke's Clinic came to an end and school nursing services returned to the Christian County Board of Education. Both programs that were being offered by the health department were great community partnerships, but fell outside of the core public health services. We are proud of our accomplishments with these community partnerships and happy that these programs are being carried on without our involvement.

As we move forward into the 2013/2014 fiscal year, the Christian County Health Department will renew its commitment to excellence through the delivery of its mission of providing and promoting affordable medical services, community health education and environmentally safe surroundings to improve the quality of life of present and future citizens of Christian County. We will achieve this mission while exercising a fiduciary responsibility to the tax payers of Christian County. We will continue to build a strong staff and dedicated board of health. Together we will work to "change the public's health one person at a time".



Laura Hammons
Public Health
Assistant Director

Mark E. Pyle
Public Health Director



Vicki Poe
Administrative
Secretary



Amanda Bassingthwaite
Public Information Officer/
Patient Advocate



Joshua Mosby
Technology
Coordinator

ACCOUNTING



JoEllen Stephens
Accounting Supervisor



Belinda Babb
Account Clerk



Rita Stallons
Account Clerk

Steps of CCHD's Accreditation Journey

-  Strategic Plan Created
-  Accreditation Committee Formed
-  Community Health Assessment Started
-  1st CQ1 Team Assigned
-  Self Assessment Tool Started
-  1st CQ1 Team Completes & Implements Protocols
-  CHA & CHIP Completed
-  Apply for Accreditation
-  Self Assessment Tool Completed
-  Receive Accreditation Status

*When the puzzle is complete,
CCHD will be accredited!*

WE ARE
HERE

ROADMAP TO COMMUNITY HEALTH



Map from Mobilizing for Action through Planning and Partnerships (MAPPP)

Our Vision

To become a nationally accredited health department through the Public Health Accreditation Board (PHAB) by 2014.

Formulate Goals and Strategies

- Community Health Improvement Plan

Identify Strategic Issues

- Chronic Disease Prevention
- Cancer Prevention
- Access to Primary Health Care
- Ensuring Healthy Start for Ages 0-5
- Encouraging Healthy Lifestyles in Ages 6-18

Accomplishments to Date

- Established patient advocate position
- Jennie Stuart Medical Center has recruited 8 new physicians - 2 leaving = 6 new physicians
- CCHD has developed and implemented a comprehensive diabetes program

- Community partners have agreed to a healthcare coalition.
- Hopkinsville City Council has approved funding for the first phase of rails-to-trails project.
- Smoke free ordinance adopted by Hopkinsville City Council effective 1/1/2013.
- CCHD implemented a new American Lung Association "Freedom from Smoking" class.
- CCHD has implemented a new case management program for immunization documentation.

CLINICAL SERVICES



Amy Maternowski
Women's Healthcare
Nurse Practitioner
Clinic Program Manager



Amanda Sholar
Women's Healthcare
Nurse Practitioner



Jeanine Evans
Advanced Practice
Registered Nurse



Callie Wells
Family Nurse
Practitioner
Certified Diabetes
Education



Linsey Ramage
Registered Dietician



Jennifer Boone
Registered Nurse



Dianne Cato
Registered Nurse



Terah Cofield
Registered Nurse



Heather Congdon
Registered Nurse



Tara Hart
Registered Nurse



Christy Oliphant
Registered Nurse



Ashley Workman
Registered Nurse

The Christian County Health Department offers clinical services based on Kentucky's Core Public Health Services.



Colon Cancer Screening Program

Christian County was fortunate to have been chosen as one of ten regions to offer the Kentucky Colon Cancer Screening Program. Through June 2014, colon screenings will be available to low income, uninsured residents who qualify by age or risk factors in Christian and Todd counties. There are two colon cancer screening tests included in the program: the fecal immunochemical test (FIT) and



colonoscopy. The health department hopes to complete at least 200 FIT screens and 50 colonoscopies in the next fiscal year.

Clinical Services July 1, 2012 - June 30, 2013

	Services	Patients
Dental Varnish	20	8
Pediatric	30,980	8,984
Family Planning	17,397	1,911
WIC	55,462	7,603
Nutrition Counseling	99	85
TB	2,984	1,008
STD	8,252	1,505
Diabetes	1,858	133
Adult	10,146	5,134
Cancer	5,538	1,227
School Health	37,398	4,782
Total Services	170,134	
Unduplicated Patient Count		19,496



Christian County Prenatal Program

To assure prenatal care to patients of Christian County who are underinsured with no other form of payment and have an income at or below 185% of the federal poverty level, we have started a prenatal program. This program is a contracted service with OB/GYN Associates.



Diabetes & Hypertension Program

Our diabetes and hypertension programs continue to grow. We have recently started the Christian County Health Department Health Assistance for Patients Program (HAPP). The



fund was established to assist individuals who are both residents of Christian County and receive essential health services in the diabetes and/or hypertension programs from the Christian County Health Department. This

fund helps patients receive critical medications, healthcare supplies, or other items that are essential to their health who could not otherwise afford them.

Registered Dietician

We have a Registered Dietician on staff to provide nutritional counseling and diet planning for anyone in Christian County.



Certified Lactation Counselors



We have Certified Lactation Counselors to offer breastfeeding classes and individual counseling sessions with clients.

Other Clinical Services

Registered Nurses and Nurse Practitioners provide Family Planning, Well Child exams, physicals, WIC, TB testing and treatment, Cancer Screenings, STD services, immunizations for adults and children, as well



as various other health screenings.

COMMUNITY WELLNESS

The Community Wellness Program provides a variety of health and education services to the residents of Christian County. Topics offered include childbirth and breastfeeding classes, CPR, Safe Sitter®, diabetes and nutrition education classes.

Safe Sitter®

During the summer of 2013, 20 students participated in the Safe Sitter® babysitting course and learned valuable skills such as first aid, CPR, effective techniques and other techniques to be an effective and safe sitter.

Freedom From Smoking®

The Freedom From Smoking® smoking cessation program held its first two courses where 78% of the participants quit smoking and 66% remain smoke free.

Car Seat Inspection

Certified Child Passenger Safety Technicians completed 112 car seat inspections and



provided 102 car seats to families in need.



CCHD Wellness Toolkit

In an effort to promote community wellness among our businesses, CCHD will soon be offering a wellness toolkit on our website at christiancountyhd.com. Businesses will be able to download resources such as tracking forms, brochures, and other materials needed to successfully run a program within their facility. Links to local health providers and other valuable information will also be provided.

Our focus is prevention, education and providing information to better the health and wellness of Christian County residents.

The Community Wellness staff looks forward to the upcoming year of providing health education and services.



Debbi Deck
Registered Nurse/
CPR Instructor

SUPPORT SERVICES

The Support Services department provides assistance and support in areas of registration, WIC, record requests, scheduling of appointments, as well as many other services for the Christian County Health Department.



Beth Campbell, RN
Support Services Manager



Dawn Reigel
Support Services Supervisor



Crystal Denny
Support Service Associate



Tina Holder
Support Service Associate



Tasha Lewis
Support Service Associate



Sheila Rivera
Support Service Associate



Krista Silvy
Support Service Associate



Susan Wilson
Support Service Associate

HANDS

The HANDS Program is a home visitation program for all qualifying expecting parents or parents of a newborn. This program has helped to decrease the number of premature infants and low birth weight babies, and to decrease the number of developmental delays. The HANDS program was one of the few local health departments in the state to receive a grant to expand its services.



Pat Mashburn
*Registered Nurse
HANDS Supervisor*



Mona Boyd
Registered Nurse



Darlene Shemwell
*Family
Support Worker*



Jill Van Gotum
*Family
Support Worker*

INTERPRETER



Ana Sanchez
Interpreter



OAK GROVE W.I.C. CLINIC



Ronda Taylor
Support Service
Supervisor



Jen Jorstad
Registered Nurse



Roxie Taibali
Support Service Associate

The Oak Grove WIC Clinic, housed in Christian County, provides a supplemental nutrition

program for Women, Infants, and Children (WIC) for Christian County residents.

WIC provides federal grants to states for supplemental foods, health care referrals, and nutrition education for low-income pregnant, breastfeeding, and non-breastfeeding postpartum women, and to infants and children up to age five who are found to be at nutritional risk.



WIC Eligibility Requirements

To be eligible for WIC services, applicants must meet the following criteria:

Categorical –

- ◆ Women (pregnant, postpartum up to six months, or breastfeeding)
- ◆ Infants (up to infant's first birthday)
- ◆ Children (up to child's fifth birthday)

Residential –

- ◆ Must reside in the state of Kentucky

Income –

- ◆ Receive Medicaid or Food Stamp benefits
- ◆ Or must qualify based on income scale

Nutrition Risk –

- ◆ Must be evaluated by a health professional (can be completed at CCHD)
- ◆ Evaluation shows a medical-based or dietary-based condition



ENVIRONMENTAL/ PREPAREDNESS



Matt Futrell
Health
Environmental/
Preparedness
Coordinator



Jill Harton
Health
Environmental



Kristi Wyatt
Health
Environmental

The Environmental department's toilet demonstration is used at community events to increase community awareness of onsite sewage treatment systems. The demonstration is a toilet built on a platform with a miniature septic tank and drain field. In our presentations we go through the entire water cycle starting with where our drinking water actually comes from and ending with the water treatment process. Many people fail to realize treated onsite sewage and municipal sewage flows through the Little River basin and collects in Lake Barkley. Lake Barkley just happens to be where we draw our drinking water from, so if we do not regulate and maintain our sewage treatment systems the end result is MUDDY WATER.



BUILDING MAINTENANCE



Rick Ahart
Building Maintenance Supervisor



Connie Wright
Custodian

Our Canton Street facility in Hopkinsville opened in 1990. During the 2012-2013 fiscal year, renovations were made to the facility to update the exterior and interior of the building. Renovations to the exterior included painting, weather proofing all of the windows, and landscaping. Interior renovations included new carpet, tile, and rubberized flooring, and the addition of an access control system. The HVAC and boiler systems were also replaced.

Environmental Health

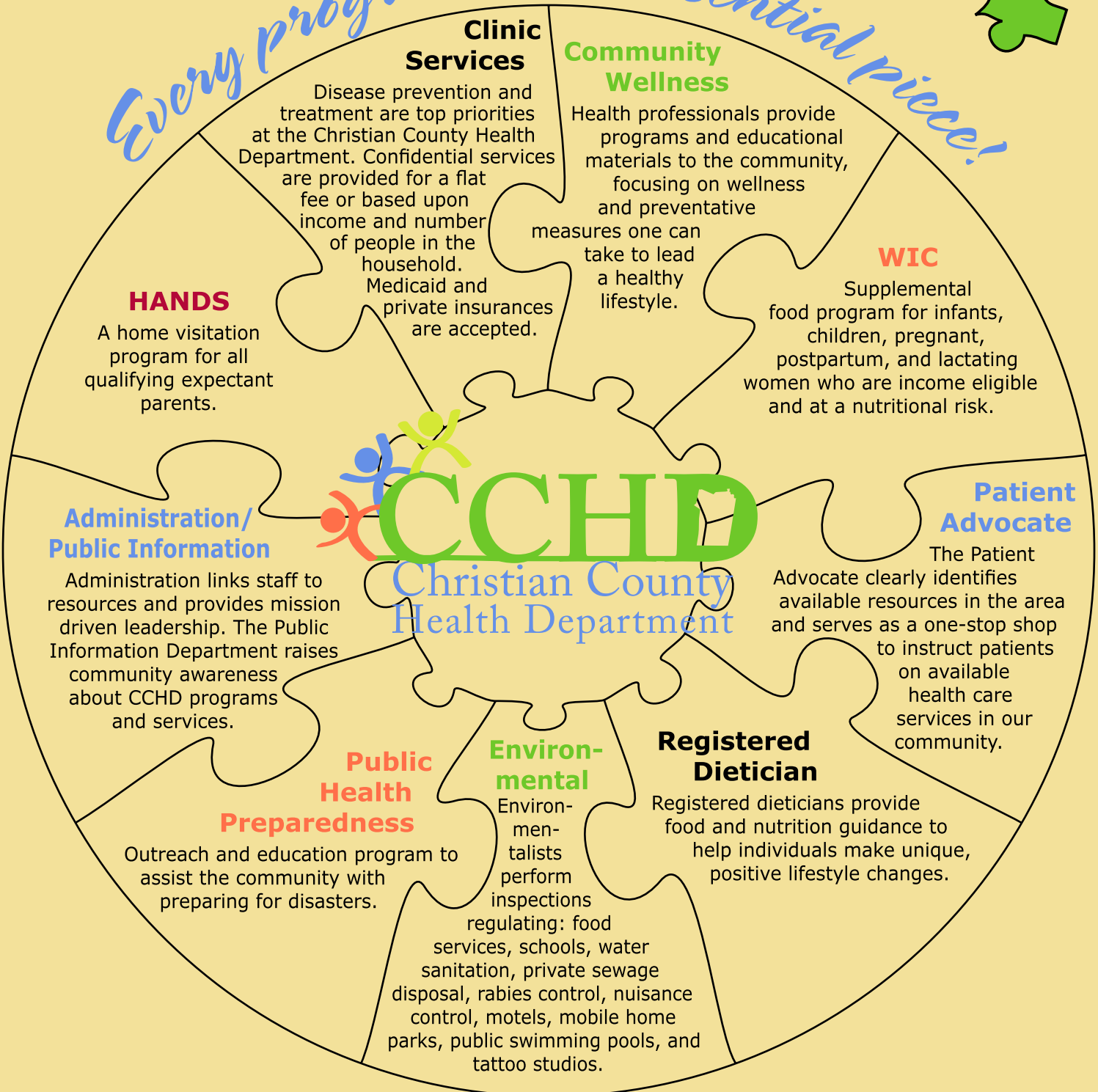
July 1, 2012 – June 30, 2013

Programs	Active Establishments	Service* Activities
Food Concessions	12	20
Temporary Food Service		117
Food Service Establishment	213	877
Vending Machines	15	11
Retail Food Establishment	50	247
Retail Food Stores	51	112
Hotel or Motel	19	33
Mobile Home/RV Parks	36	56
Tattoo Studio	5	23
Schools	21	59
Septic Tank Cleaning Vehicles	10	12
Septic Cleaning Disposal Site	2	3
Ear Piercing Studio	4	11
Body Piercing Studio	3	9
Youth Camps	3	3
Nuisance Control		19
Environmental Protection		55
Private Sewage		26
Private Water		195
Tanning Beds	3	3
Onsite Sewage Disposal		570
Swimming Area	25	261
Beach Areas	1	5
Rabies		158
Other		26
TOTAL	475	2,943

*Service activities include permitting, inspections, follow-ups, and complaints.



Every program is an essential piece!



Hopkinsville Clinic

1700 Canton Street • P.O. Box 647 • Hopkinsville, KY 42241

Phone 270-887-4160 • Fax 270-887-4165

Hours: Mon-Fri 8:00 to 4:00 • Closed to Clinic Patients Thurs 12:00 to 4:00

Oak Grove WIC Clinic

240 Thompsonville Lane • Oak Grove, KY 42262

Phone 270-640-6022 • Fax 270-640-6099

Hours: Mon-Fri 8:00 - 4:00 (closed daily from 12pm-12:40 pm)

www.christiancountyhd.com