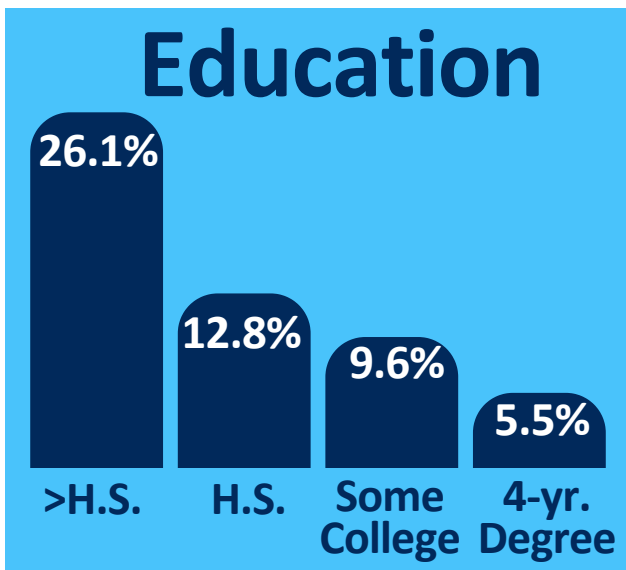
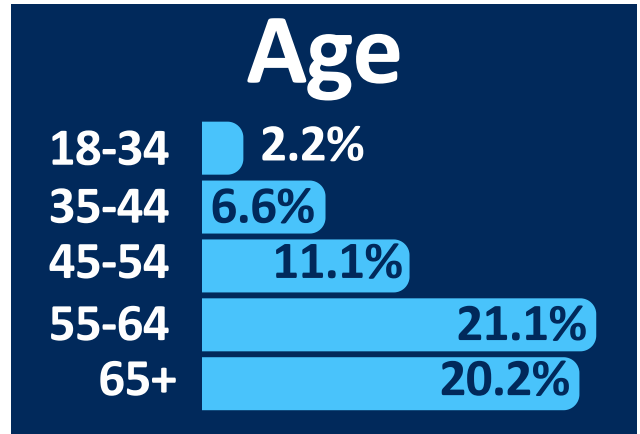
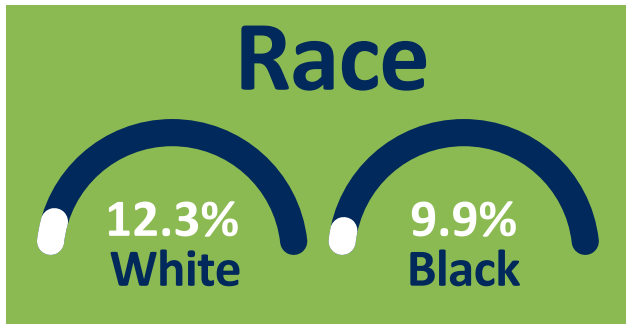
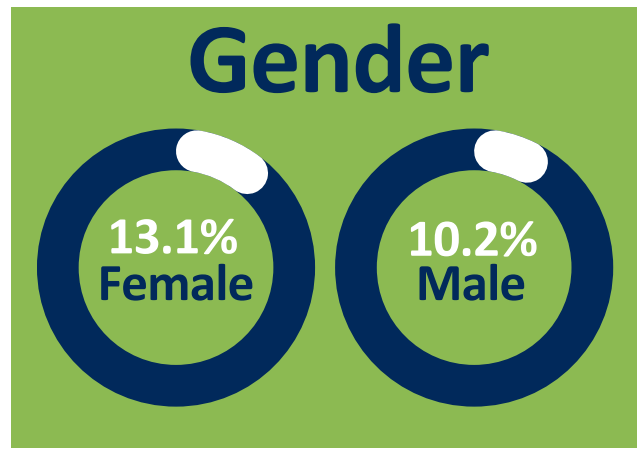
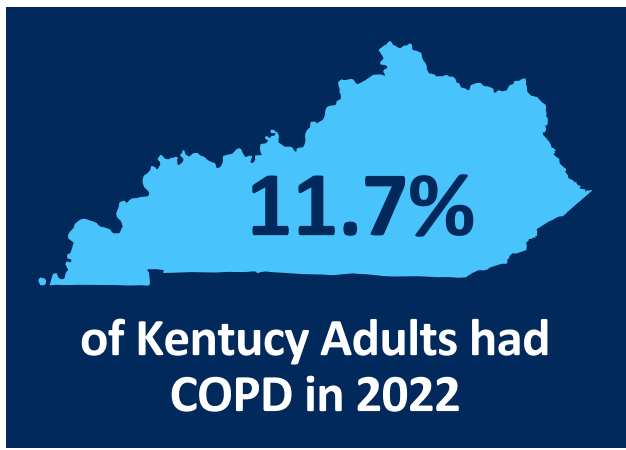
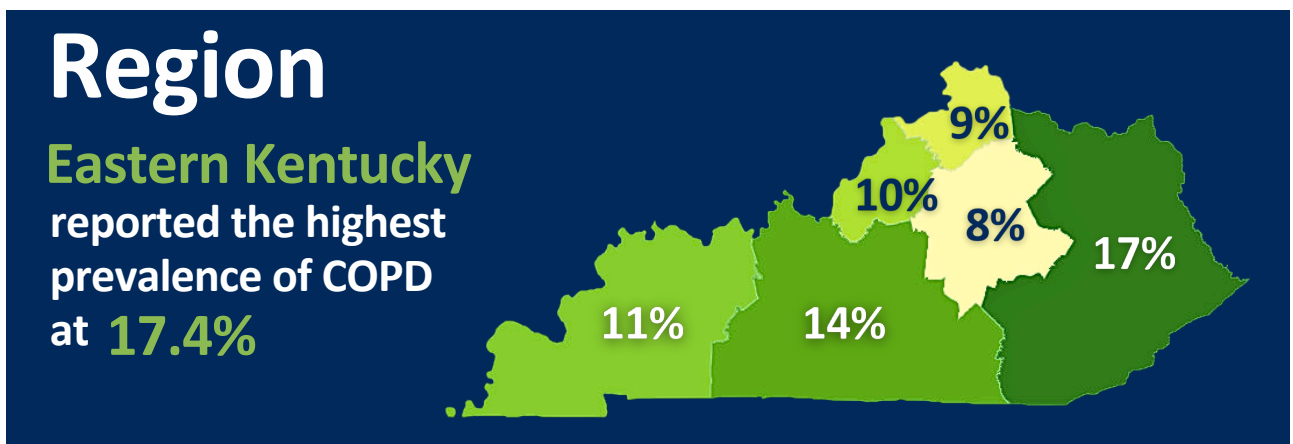


Kentucky COPD



Income

Adults with an income less than \$25,000 were nearly **5 TIMES** more likely to have COPD than those earning over \$50,000



Data sourced from the Kentucky Behavioral Risk Factor Survey (KyBRFS) 2022. Funding for this project was received from the Centers for Disease Control and Prevention (CDC) National Center for State, Tribal, Local, and Territorial Public Health Infrastructure and Workforce, Preventive Health and Health Services Block Grant.



Kentucky Public Health
Prevent. Promote. Protect.

COPD Program