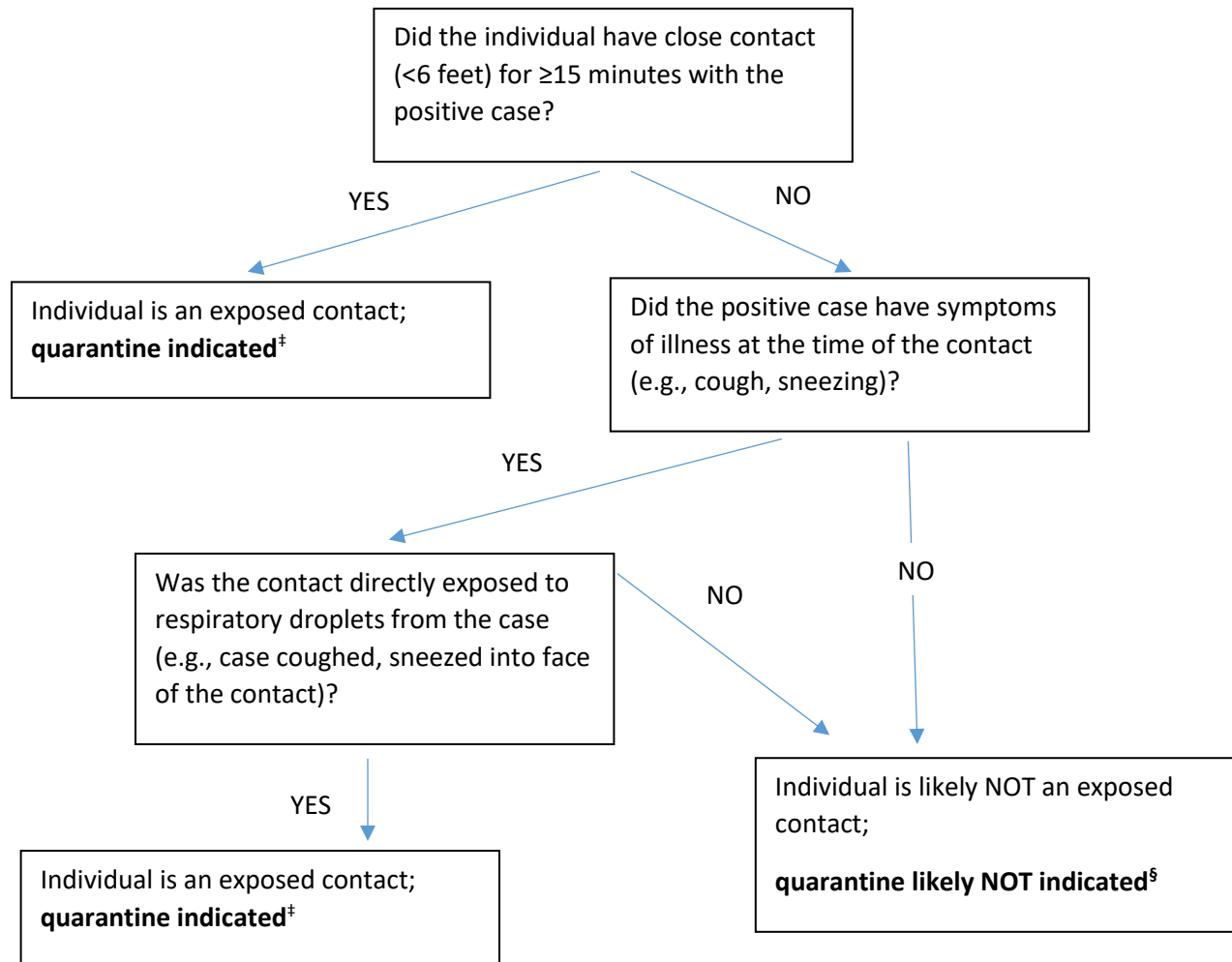


Assessment of Community-Related* Exposure† to a COVID-19 Positive Case



*Any non-healthcare exposure is considered community-related.

†In the period from 2 days before symptom onset (or 2 days before testing positive if asymptomatic) until the case meets criteria for release from isolation.

‡This is irrespective of whether the person with COVID-19 or the contact was wearing a mask or whether the contact was wearing respiratory personal protective equipment (PPE).

§Additional situations may require quarantine even if contact not within 6 feet for ≥15 minutes or not directly exposed to respiratory secretions from the positive case. Examples include: sleeping in the same room for an extended period of time even if more than 6 feet apart; physical contact with a confirmed case; sharing of food, drink or other personal items (e.g., utensils, cigarettes); extended time in an enclosed space with limited ventilation.