

# The Road to ABI Waiver Services

Provided by:  
Kentucky Department for Medicaid Services  
Acquired Brain Injury Branch



# What is Acquired Brain Injury?

- Acquired Brain Injury is an injury to the brain which is not hereditary, congenital or degenerative.
- Acquired Brain Injury **includes**: central nervous system injury from physical traumas, from anoxia or hypoxic episodes, allergic conditions, toxic substances, and other acute medical/clinical incidents.
- Acquired Brain Injury **does not** include progressive dementia, depression and psychiatric disorders, mental retardation or birth defect related disorders

# TBI in the Civilian Population

- An estimated 10 million Americans are affected by stroke and TBI, making brain injury the second most prevalent injury and disability in the United States.
- 1.7 million Americans survive traumatic brain injuries each year. More than 55,000 people die every year as a result of traumatic brain injury.
- 56% of adults with brain injuries tested positive for blood alcohol.
- Each year, 2-4 million women are physically abused by an intimate partner. The head, face and neck are the most frequent sites of injury.

*\*Brain Injury Association of New York State*

# What services and supports are now available to help people with brain injuries?



- Acquired Brain Injury Medicaid Waiver Program
- Acquired Brain Injury Long Term Care Medicaid Waiver Program
- Traumatic Brain Injury Trust Fund
- Department of Aging Neurobehavioral Program
- Kentucky Transitions (Money Follows the Person)

# Acquired Brain Injury Waiver Program

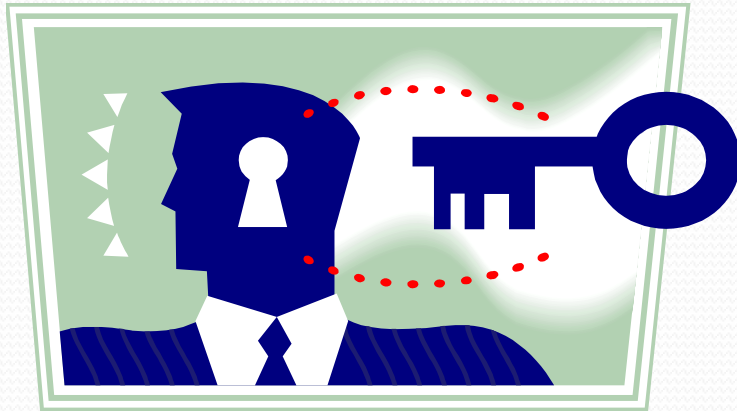
- A community-based program for rehabilitation and training.
- Not a lifelong, maintenance program
- 383 unduplicated slots per year
- Administered by the KY Department for Medicaid Services, Acquired Brain Injury Branch

# Acquired Brain Injury Long Term Care Waiver Program

- A program for those who have met maximum rehab potential and whose needs are not met by the Acquired Brain Injury Waiver
- Provides maintenance and support
- Members must meet Kentucky Medicaid eligibility requirements
- 320 unduplicated slots per year
- Administered by the Acquired Brain Injury Branch

# *ABI Medicaid Waiver*

## People are eligible who:



- Are eighteen years of age and older
- Are at Rancho Level IV or above
- Meet nursing facility level of care
- Have an ABI that involves; cognition, behavior, or physical function
- Show the potential to progress in rehabilitation
- Are financially eligible for Medicaid by the Dept. of Community Based Services

## *ABI Long Term Care Waiver*

# People are eligible who:

- Are 18 years and older
- Are at a Rancho Level IV or above
- Meet nursing facility level of care
- Have an ABI which necessitates; supervision, rehabilitation services, and long term supports
- Have an ABI that involves; cognition, behavior, or physical function
- Are financially eligible for Medicaid by the Dept. of Community Based Services



# ABI Waiver Services

- Case management
- Respite
- Adult day training
- Behavioral intervention
- Occupational therapy
- Supervised residential care
- Specialized medical equipment and supplies
- Personal care
- Companion services
- Supported employment
- Counseling
- Group counseling
- Speech therapy
- Environmental modifications
- Consumer directed option
- Assessment & reassessment

# ABI Long Term Care Waiver Services

- Case management
- Respite
- Adult day training
- Behavioral programming
- Occupational therapy
- Supervised residential care
- Specialized medical equipment and supplies
- Family training
- Adult day health care
- Assessment & reassessment
- Community living supports
- Supported employment
- Counseling
- Group counseling
- Speech therapy
- Environmental modifications
- Nursing supports
- Physical therapy
- Consumer directed option

# Traumatic Brain Injury Trust Fund

- The TBI Trust Fund was established to provide flexible funding and support to those with brain injuries. The fund supports supplemental community-based efforts to meet the special needs of each individual with a brain injury.
- Funds are obtained from a percentage of court costs assessed in criminal cases & DUI fees.
- Medicaid eligibility is not a requirement to access funding or services

# Traumatic Brain Injury Trust Fund

## Who is eligible?

- People with brain injury and without viable funding sources for needed services are eligible to receive support from the TBI Trust Fund. There are no caps for family income levels used to screen for services. Lack of adequate funding may be a result of the exhaustion of current benefits or benefit exclusion.
- Medicaid eligibility is not a requirement to access funding or services

# **TBI Trust Fund**

## **Benefits Management Program**

- Operated by the Kentucky Department for Aging and Independent Living
- The Benefits Management Program provides case management services to all applicants
- Responsible for receiving and reviewing funding and service requests
- Responsible for distributing benefits from the Fund.

# TBI Trust Fund Benefits

- case management
- community residential services
- structured day programs
- psychological services
- prevocational services
- supported employment services
- companion services
- respite care
- occupational therapy
- speech/language services
- wraparound services

# TBI Trust Fund Benefits limits



- \$15,000 per person, per year
- \$60,000 per lifetime
- For more information:  
(502) 564-6930 select  
option 2 between  
8 AM- 5 PM EST

# Kentucky Transitions

## (Money Follows the Person)

- ✓ Kentucky Transitions is a program developed by the Cabinet for Health and Family Services through a demonstration grant from the Centers for Medicare and Medicaid Services.
- ✓ The purpose of the grant is to facilitate transition of and to provide sustainable community based services to individuals who choose to move from Medicaid funded long term care settings (ICFs/MR and nursing facilities) into the community.



# Kentucky Transitions:

For more information please contact:

Kentucky Transitions (MFP)

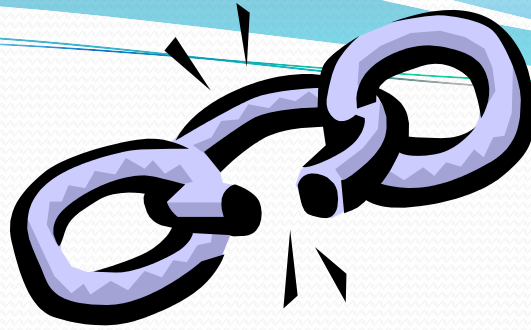
275 East Main St. 6W-B

Frankfort, Ky. 40601

502-564-0330, Toll Free: 877-564-0330

# More potential sources of services and supports include:

- Community Mental Health Centers
  - Substance Abuse programs
- Low income housing programs
- Brain Injury Alliance of Kentucky



## Missing Links in the Chain of Brain Injury Support Services

- Crisis stabilization services for adults
- Inpatient neurobehavioral services for adults
  - Diversion programs from jail
- Members requiring a higher level of medical services, behavioral services, or a combination of both.

# The On-going Development of Services:

- The Department for Medicaid Services and the Acquired Brain Injury Branch continue to work with providers of community services, members with brain injury, families and advocacy groups to identify and develop services and supports on a local, state and national level.

## **For additional information, please contact:**

KY Department for Medicaid Services  
Division of Community Alternatives  
Acquired Brain Injury (ABI) Branch  
275 East Main Street 6W-B  
Frankfort, KY 40621  
502.564.5198

[Karen Maciag, ABI Branch Manager](#)

**LOOK AT THE CHART AND SAY  
THE COLOR NOT THE WORD.**

<b>YELLOW</b>	<b>BLUE</b>	<b>ORANGE</b>
<b>BLACK</b>	<b>RED</b>	<b>GREEN</b>
<b>PURPLE</b>	<b>YELLOW</b>	<b>RED</b>
<b>ORANGE</b>	<b>GREEN</b>	<b>BLUE</b>